

Frank Harris & Co.



Loxham House, WC1H

£2,200 pcm

A smartly presented and well-proportioned one bedroom property ideally located in the heart of Kings Cross. The apartment has wood floors throughout and a spacious rear facing double bedroom, bright living room and separate kitchen.

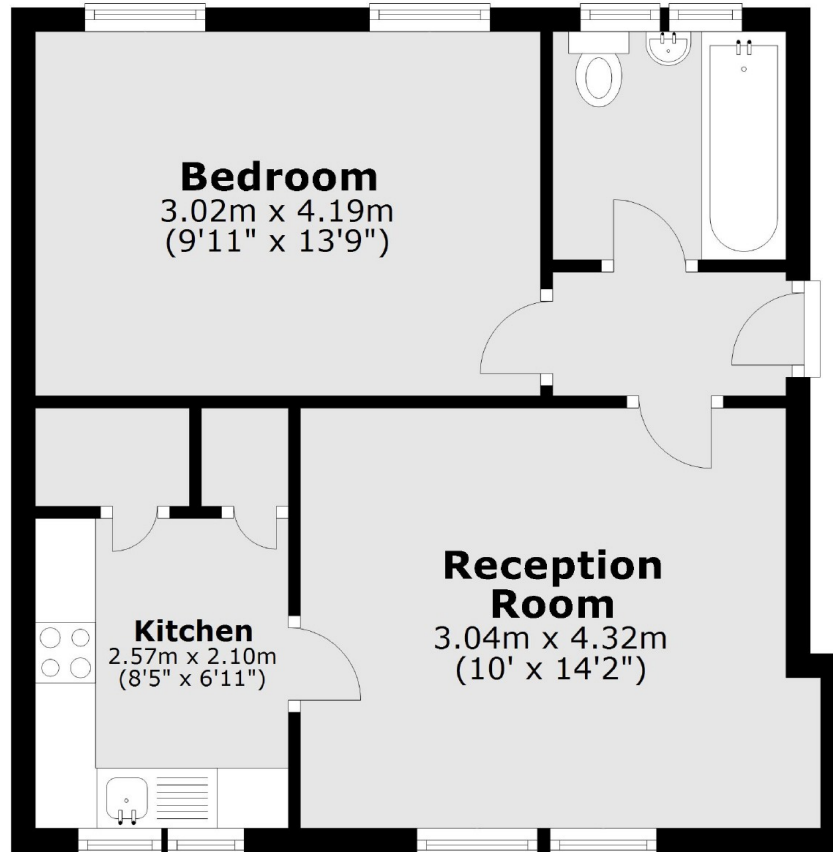


Loxham House is located within walking distance of supermarkets, cafés and shopping at The Brunswick Centre. It benefits from excellent transport connectivity, with King's Cross St Pancras station and London King's Cross railway station a short walk away.

- One double bedroom • Living Room • Wood Floors •
 - Separate Kitchen • Third Floor • Furnished •
-



Frank Harris & Co.



Total area: approx. 41.5 sq. metres (447.1 sq. feet)

Frank Harris & Co. Bloomsbury and Kings Cross
81 Marchmont Street, London,
WC1N 1AL
020 7387 0077
bloomsburylettings@frankharris.co.uk

Energy Rating: C. We aim to make our particulars both accurate and reliable. However they are not guaranteed; nor do they form part of an offer or contract. If you require clarification on any points then please contact us, especially if you're traveling some distance to view. Please note that appliances and heating systems have not been tested and therefore no warranties can be given as to their good working order.

