



Albany Road, Gillingham ME7 4HP

£1,400 Per Calendar Month

A well-presented and spacious three-bedroom family home located on Albany Road in Gillingham, available at the end of April.

The property offers a modern interior throughout, with a bright and airy feel and generously sized rooms. Downstairs comprises a large open living and dining area, leading through to a modern fitted kitchen with ample storage and worktop space, and a family bathroom.

Upstairs, the property benefits from three good-sized bedrooms, all offering plenty of space.

To the rear, there is a private garden, ideal for outdoor use and low-maintenance living.

Situated in a convenient location, the property is close to local amenities, schools, and transport links, making it ideal for families or working professionals. CR Real Estate are part The Ombudsman Redress Scheme and are a member of the Propertymark Client Money Protection Scheme. Tenant deposits are protected by the Tenancy Deposit Scheme. For more information, please contact us.

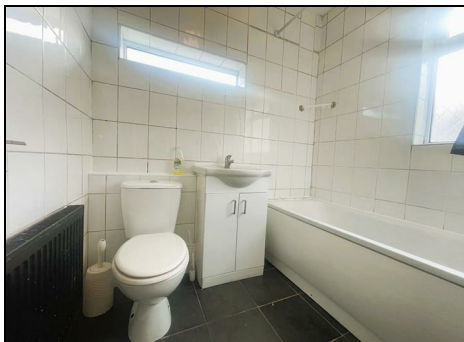
Client Money Protection is provided by: Client Money Protect. Scheme Ref: CMP004209

Independent redress is provided by: The Property Ombudsman (TPO). Membership Number: E01687



Energy Efficiency Rating		
	Current	Potential
Very energy efficient - lower running costs		
(92 plus) A		
(81-91) B		
(69-80) C		
(55-68) D		
(39-54) E		
(21-38) F		
(1-20) G		
Not energy efficient - higher running costs		
England & Wales	EU Directive 2002/91/EC	

Environmental Impact (CO ₂) Rating		
	Current	Potential
Very environmentally friendly - lower CO ₂ emissions		
(92 plus) A		
(81-91) B		
(69-80) C		
(55-68) D		
(39-54) E		
(21-38) F		
(1-20) G		
Not environmentally friendly - higher CO ₂ emissions		
England & Wales	EU Directive 2002/91/EC	



ESTATE AGENCY : REDEFINED

