



Victoria Road, W3

£235,000

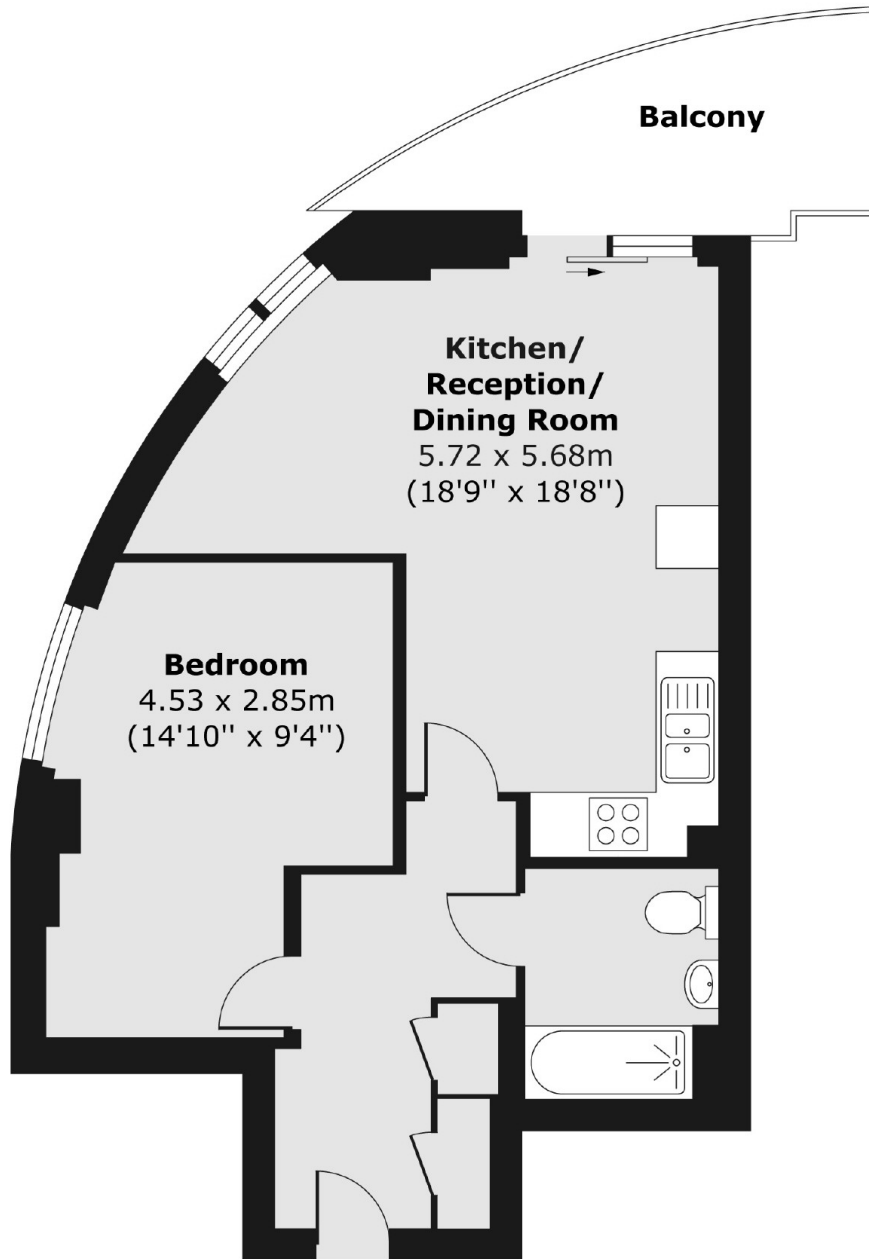
A one bedroom apartment situated on the eighth floor of this popular development. The flat has circa 500 sq.ft of living space, a large private balcony and would suit a first time buyer.

Situated less than 150 yds from North Acton tube station (Central line) and half a mile from Acton Main Line station (Elizabeth line).

Features

One Bedroom Apartment
Eighth Floor
Lift Access
Private Balcony
Close to Tube Station

Victoria Road,
London, W3



Total area (approx.) 47.03 sq. m (506 sq. ft)
Balcony area (approx.) 7.20 sq. m (77 sq. ft)