



Boleyn Avenue, PETERBOROUGH
£270,000 Freehold

**Sharman
Quinney**

Key Features

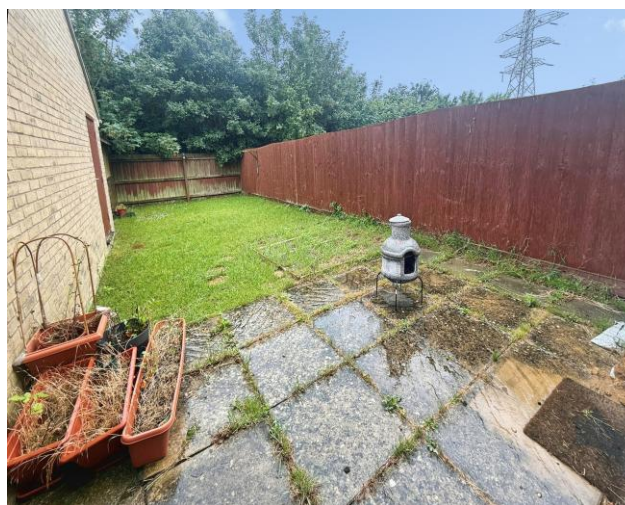


- Three-storey home
- Popular location
- Ensuite to master bedroom
- Generous living room with garden access
- Ground floor cloakroom

This attractive property benefits from a prime end-terrace position, providing additional privacy along with a well-proportioned layout arranged over three floors. Located in the popular Sugar Way area, the home is conveniently positioned for access to local amenities, schooling, Peterborough City Centre and transport links.

The ground floor comprises a welcoming entrance hall leading to a bright kitchen. To the rear, a generously sized living room provides a comfortable and inviting space with access to the garden, creating an ideal setting for both relaxing and hosting guests. A convenient cloakroom completes the ground floor.

On the first floor, you will find two well-proportioned bedrooms, both offering versatile use



as guest rooms, children's bedrooms or home office space. Alongside a family bathroom fitted with a modern suite.

Occupying the entire top floor is an impressive principal bedroom offering fitted storage and an en-suite shower room.

Externally, the property benefits from a well-maintained enclosed rear garden, ideal for outdoor dining and family enjoyment. The home also offers allocated parking and garage. Sugar Way remains one of Peterborough's most desirable residential locations, offering easy access to the Ferry Meadows Country Park, local shops, schools and excellent transport links including the A1 and Peterborough train station, providing fast connections to London.

Lounge/Diner - 3.87m x 4.49m (12' 9" x 14' 9")

Kitchen - 1.83m x 2.95m (6' 0" x 9' 8")

Bedroom 1 - 3.85m x 3.58m (12' 8" x 11' 9")

Bedroom 2 - 2.11m x 2.90m (6' 11" x 9' 6")

Bedroom 3 - 2.831m x 2.494m (9' 3" x 8' 2")

To view this property call Sharman Quinney on:
01733 896222

Selling your property?

Contact us to arrange a **FREE** home valuation.

 01733 896222

 13 Desborough Avenue, Stanground,
PETERBOROUGH, Cambridgeshire, PE2 8RG

 stanground@sharmanquinney.co.uk

 www.sharmanquinney.co.uk



 SCAN ME



Sharman Quinney Holdings Limited is registered in England and Wales under company number 4174227, Registered Office is Cumbria House, 16-20 Hockliffe Street, Leighton Buzzard, Bedfordshire, LU7 1GN. VAT Registration Number is 500 2481 05.

1: These particulars do not constitute part or all of an offer or contract. 2: The measurements indicated are supplied for guidance only and as such must be considered incorrect. 3: Potential buyers are advised to recheck the measurements before committing to any expense. 4: Sharman Quinney has not tested any apparatus, equipment, fixtures, fittings or services and it is the buyers interests to check the working condition of any appliances. 5: Sharman Quinney has not sought to verify the legal title of the property and buyers must obtain verification from their legal representative. 6: Intending purchasers will be asked to produce identification documentation at a later stage and we would ask your co-operation in order that there will be no delay in agreeing the sale. Ref: SSQ205313 - 0001

