



## Hays Mews, W1J

£1,600 Per week

Located off Berkeley Square, this brand newly renovated two bedroom mews apartment has been refurbished to an excellent standard throughout.

The internationally renowned dining and shopping facilities of Mount Street and the locale are within a short walking distance.

### Features

Brand New Renovation  
Two Double Bedrooms  
Two Luxury Bathrooms  
Interior Designed and  
Furnished  
Air Conditioning  
\*Garage Available Under  
Separate Negotiation\*



## Hays Mews, W1J

The open plan kitchen / reception boasts excellent dining and entertaining space, perfect for both relaxing or entertaining guests.

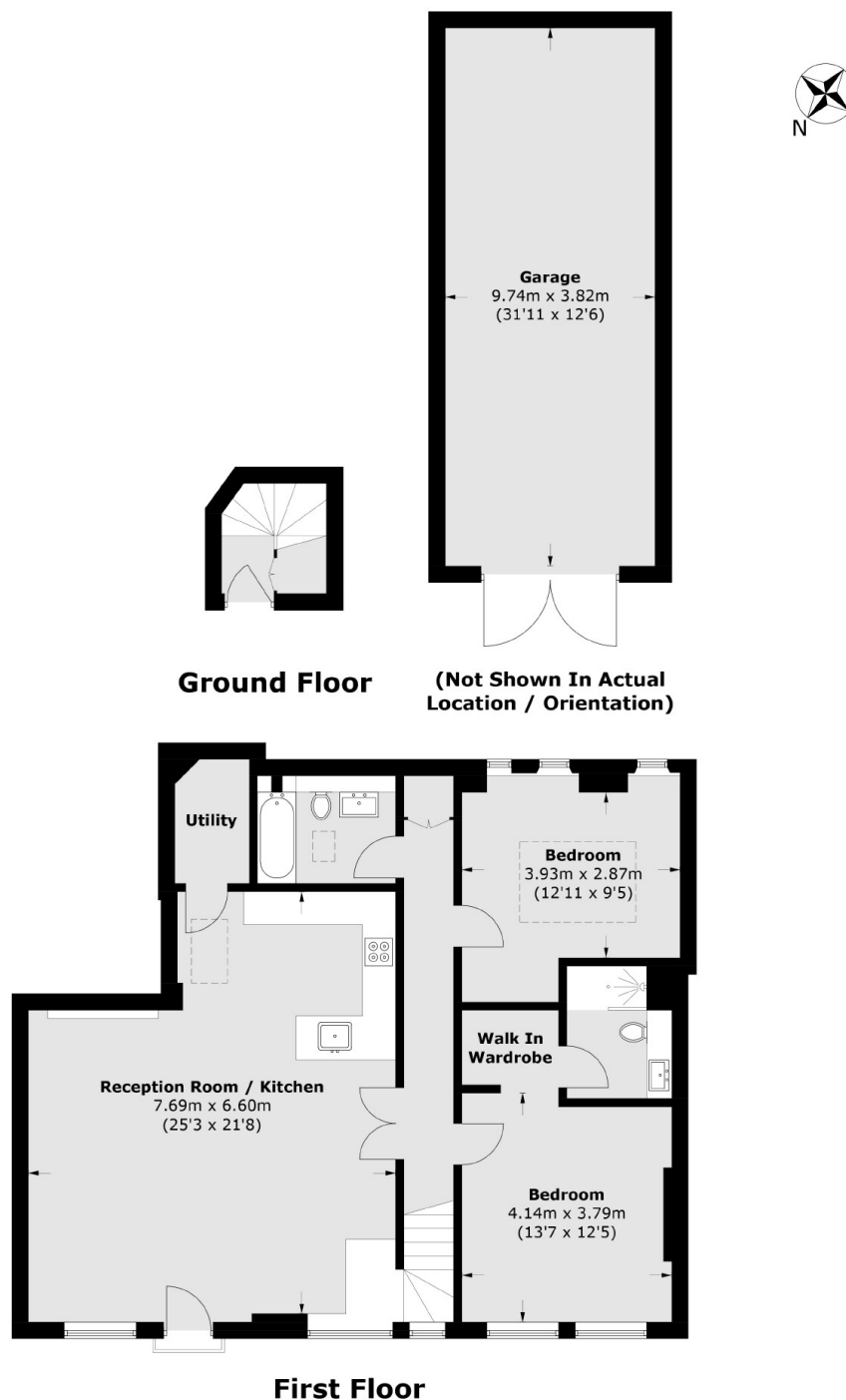
Large principal bedroom with luxury en suite bathroom and built in storage and further double bedroom with built in storage and additional family bathroom.

The property has been newly renovated offering wooden flooring, air conditioning, and contemporary fixtures, fittings and furnishings throughout. The property has been interior designed to an impeccably high standard throughout.





# Hays Mews, London, W1J



Total area (approx.): 109.4 sq. m (1,177.6 sq. ft)  
Garage area (approx.): 37.4 sq. m (402.6 sq. ft)

## Dexters

Wetherell  
102 Mount Street  
London  
W1K 2TH  
Lettings  
020 7529 5588

Energy Rating: D. We aim to make our particulars both accurate and reliable. However they are not guaranteed; nor do they form part of an offer or contract. If you require clarification on any points then please contact us, especially if you're traveling some distance to view. Please note that appliances and heating systems have not been tested and therefore no warranties can be given as to their good working order.

 **RICS** | Regulated  
Estate Agent  
and Letting Agent

[dexters.co.uk](https://www.dexters.co.uk)