



Red Hall Way | Whinmoor | LS14 1EF

£290,000

Two Bedroom Semi-Detached Bungalow | Council Tax Band C | EPC Rating D

Emsleys | estate agents

*** TWO BEDROOM SEMI-DETACHED BUNGALOW * BEAUTIFULLY PRESENTED ***

Nestled in the desirable area of Red Hall Way, Leeds, this beautifully presented semi-detached bungalow offers a perfect blend of comfort and potential. With two well-proportioned bedrooms and two bathrooms, this property is ideal for small families, couples, or those seeking single-level living.

One of the standout features of this property is its potential. Originally a three-bedroom home, there is ample opportunity to reconfigure the space to create additional bedrooms either downstairs by re-instating the former bedroom (currently the dining area) or converting the storage space on the first floor, making it a versatile option for those looking to expand their living arrangements.

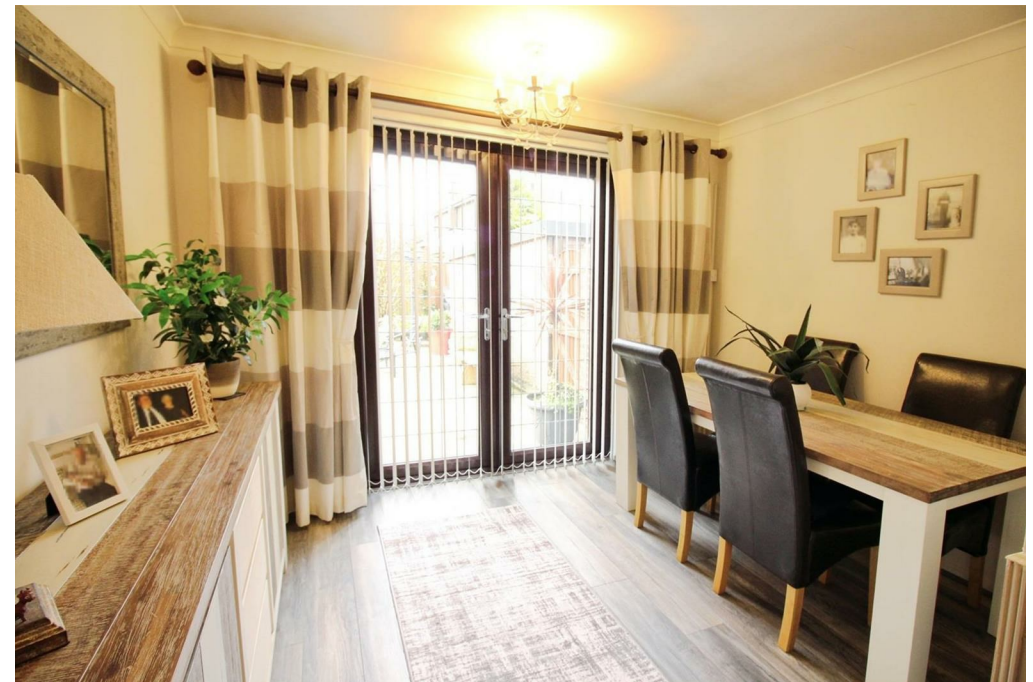
Upon entering, you are welcomed into a hallway laid with wood grain effect laminate flooring, a spacious reception room to the front provides a warm and inviting atmosphere, perfect for relaxation or entertaining guests and there is a fitted modern kitchen with integrated appliances. The dining space allows for a family dining table and chairs and grants access to the rear garden. A large double bedroom with fitted robes completes the ground floor.

The first floor offer a further double bedroom and luxurious bathroom, along with a large storage room and eaves.

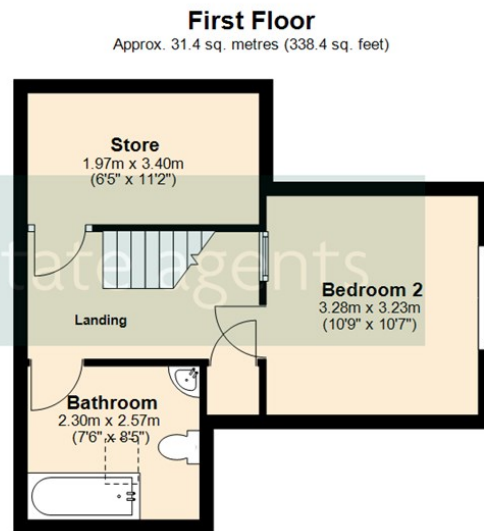
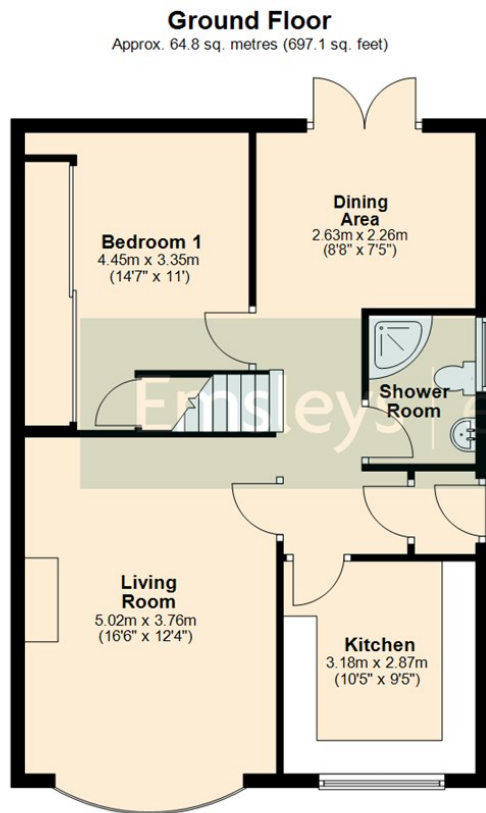
The property boasts an enclosed rear garden, providing a private outdoor retreat where you can enjoy the fresh air and sunshine. This garden is an excellent space for gardening enthusiasts or for children to play safely. Additionally, the bungalow features ample parking and garage, a rare convenience in this area.

In summary, this semi-detached bungalow on Red Hall Way is not only beautifully presented but also offers significant potential for future development. With its convenient location, ample parking, and lovely garden, it is a wonderful opportunity for anyone looking to settle in Leeds.

*** Call now to arrange your visit ! ***







Total area: approx. 96.2 sq. metres (1035.5 sq. feet)

These details are for guidance only and complete accuracy cannot be guaranteed. If there is any point, which is of particular importance, verification should be obtained. They do not constitute a contract or part of a contract. All measurements are approximate. No guarantee can be given with regard to planning permissions or fitness for purpose. No apparatus, equipment, fixture or fitting has been tested. Items shown in photographs are NOT necessarily included. Interested Parties are advised to check availability and make an appointment to view before travelling to see a property.



35 Austhorpe Road | Crossgates | Leeds | LS15 8BA
t: 0113 284 0120 | www.emsleysestateagents.co.uk

Emsleys | estate agents