



Cleveland Street, London W1T

Price £1,700 per week - Furnished, Part
Furnished







Description

This apartment has been finished to the highest of specifications with a spacious open plan living space featuring a modern fully fitted kitchen, a spacious principal bedroom with an en-suite bathroom and built-in wardrobes, a second double bedroom and an elegant bathroom suite with rainfall shower. The apartment further benefits from wooden flooring throughout, comfort cooling, underfloor heating, and a private balcony.

The development provides residents with the highest quality on-site facilities, including a 24-hour concierge team, residents gym & wellness suite, residents lounge, business suite, private dining space and landscaped roof top providing a tranquil space to relax after a busy day.

We understand that cooling/heating is delivered via a communal system for which separate charges apply.

Council tax band: G. Rent is payable on a monthly basis, and you may be required to pay more than a month's rent in advance for tenancies with annual rents exceeding £100,000. You will be required to pay a 1-week holding deposit following a successful offer. Tenancies with annual rents up to £50,000 will require a 5-week security deposit, while those exceeding this threshold will require a 6-week deposit. Utility bills, council tax, telephone line and broadband are not included in the rent. As well as paying the rent, you may also be required to make some additional permitted payments. If your tenancy does not qualify as an APT, additional fees may apply. Please visit jll.co.uk/fees for details of fees that may be payable when renting a property. To check broadband and mobile phone coverage please visit Ofcom here ofcom.org.uk/phones-telecoms-and-internet/advice-for-consumers/advice/ofcom-checker

- Modern Development
- 24 hr concierge
- Open-Plan Kitchen
- Furnished
- Wooden Flooring
- Gym
- Communal Terrace
- Close to Regents Park
- Council tax: Band G
- Deposit amount: £10,200

Floorplan

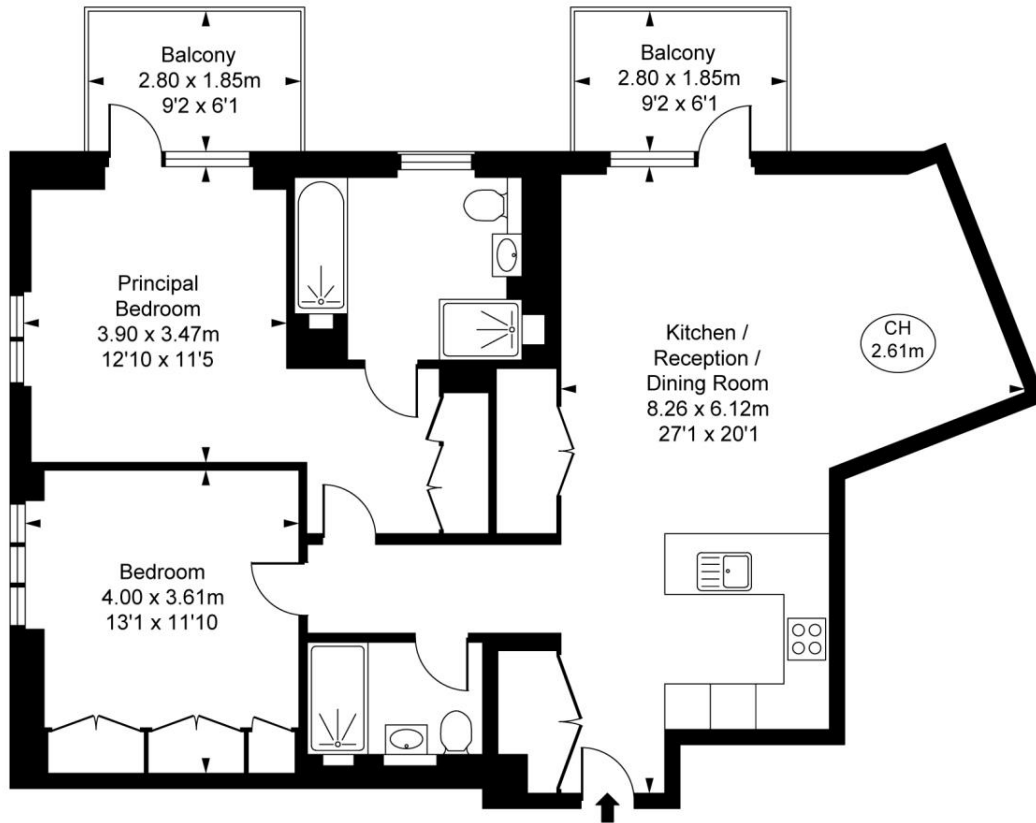
962 sq ft | 89 sq m



On Cleveland Street, W1T

Approximate Gross Internal Area
89.39 sq m / 962 sq ft

(CH = Ceiling Heights)



First Floor

This plan is not to scale. It is for guidance and not for valuation purposes.
All measurements and areas are approximate only, and have been prepared in accordance with the current edition of the RICS Code of Measuring Practice.
© Fulham Performance

Mayfair and Marylebone
St George Street,
London W1S 2FQ
+44 207 399 5550
mayfair@jll.com

Urban living, your way.

jll.co.uk/residential

© 2019 Jones Lang LaSalle IP, Inc. All rights reserved. All information contained herein is from sources deemed reliable; however, no representation or warranty is made to the accuracy thereof.

