



Guide Price
£325,000

Freehold

2x  1x  1x 

**Villa Court, Dartford,
Kent, DA1**

OVER 60?

Secure this property
for up to **59% less!**

Wards
Helping you move forwards



Main features

- End of terrace house with private driveway plus additional parking
- Generous rear garden with patio and lawn area
- Versatile conservatory for extra living space
- Quiet Cul-de-sac location
- Close to Dartford town centre, schools and transport links

Accommodation

GROUND FLOOR

Kitchen: 11'8 x 7'8 (3.56m x 2.34m)
 Lounge: 14'2 x 11'9 (4.32m x 3.58m)
 Conservatory: 12'8 x 11'8 (3.86m x 3.56m)

FIRST FLOOR

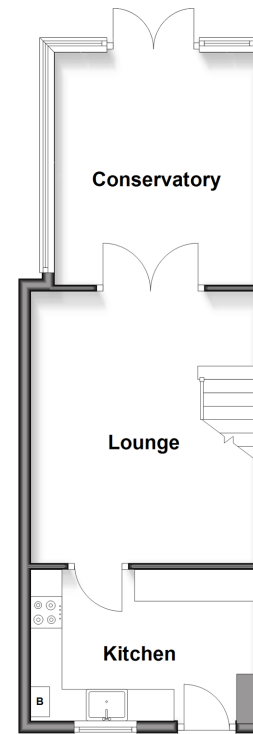
Landing
 Bedroom 1: 10'9 x 8'7 (3.28m x 2.62m)
 Bedroom 2: 9'4 x 5'9 (2.85m x 1.75m)
 Bathroom: 5'7 x 5'6 (1.70m x 1.68m)

OUTSIDE

Driveway
 Allocated Parking Space
 Rear Garden

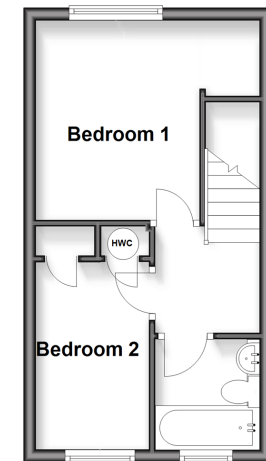
Ground Floor

Approx. 36.8 sq. metres (396.3 sq. feet)



First Floor

Approx. 24.6 sq. metres (264.5 sq. feet)



Call Dartford - 01322 288211 ■ wardsofkent.co.uk

■ Legal advice should be taken to verify fixtures/fittings, planning, alterations and/or lease details
 ■ Through a Homewise Home For Life Plan people aged 60+ can secure this property for up to 50% less, by purchasing a Lifetime Lease.

■ Appliances & services are untested, dimensions are approximate and floor plans are not to scale



10545811/20251117/MP/JH