



Coxes Farm Road  
 , Billericay, CM11 2UA  
 Offers In Excess Of £350,000

\*\* Development Opportunity \*\* Land with Planning Permission for a 3 Bedroom Chalet, Coxes Farm, Billericay \*\*

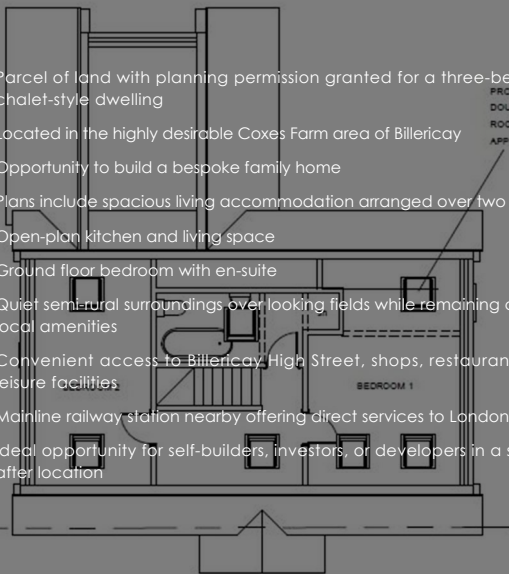
An excellent opportunity to acquire a parcel of land with granted planning permission for the construction of a well-designed three-bedroom chalet-style dwelling, situated within the highly desirable Coxes Farm area of Billericay.

This attractive plot offers the ideal setting for a bespoke family home in a peaceful semi-rural location while remaining conveniently close to local amenities, schools, and transport links. The approved plans provide for a stylish three-bedroom chalet residence, designed to maximise both living space and natural light, creating a comfortable and modern home environment.

The proposed accommodation includes spacious open-plan living areas, well-proportioned bedrooms, and a flexible layout suited to contemporary family living. The chalet design allows for generous ground floor accommodation complemented by additional bedrooms and bathroom facilities on the upper level.

Coxes Farm is widely regarded as one of the more sought-after locations within Billericay, offering a charming blend of countryside surroundings with easy access to the town centre. Billericay itself

- Parcel of land with planning permission granted for a three-bedroom chalet-style dwelling
- Located in the highly desirable Coxes Farm area of Billericay
- Opportunity to build a bespoke family home
- Plans include spacious living accommodation arranged over two floors
- Open-plan kitchen and living space
- Ground floor bedroom with en-suite
- Quiet semi-rural surroundings over looking fields while remaining close to local amenities
- Convenient access to Billericay High Street, shops, restaurants, and leisure facilities
- Mainline railway station nearby offering direct services to London
- Ideal opportunity for self-builders, investors, or developers in a sought-after location



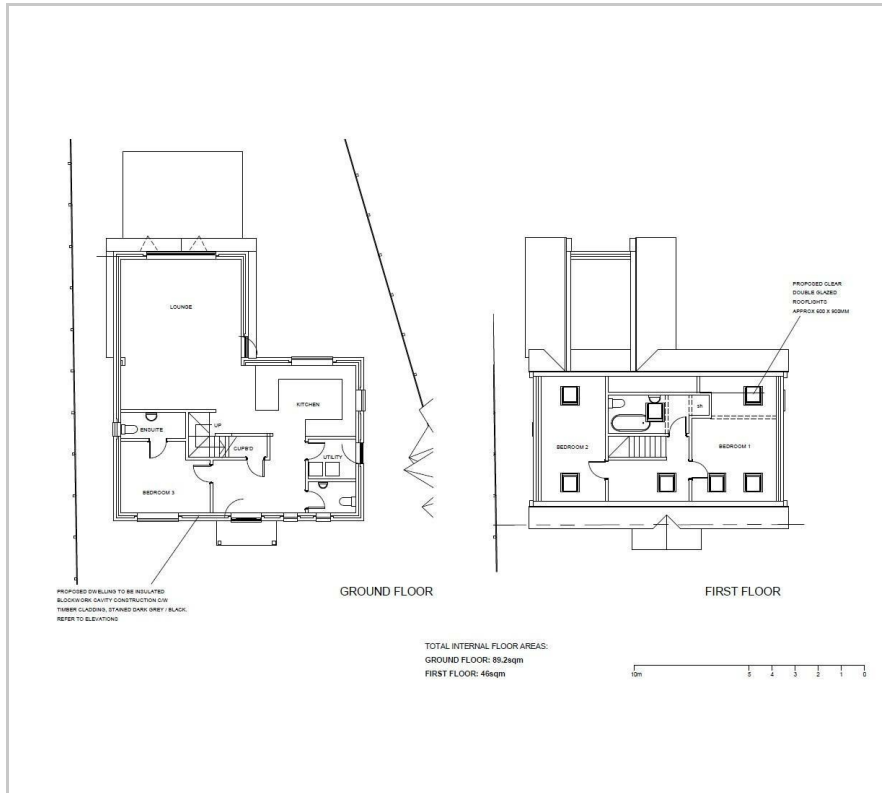
Viewing

Please contact our Sales Office on 01268 730707 if you wish to arrange a viewing appointment for this property or require further information.



TOTAL INTERNAL FLOOR AREAS:  
 GROUND FLOOR: 89.2sqm

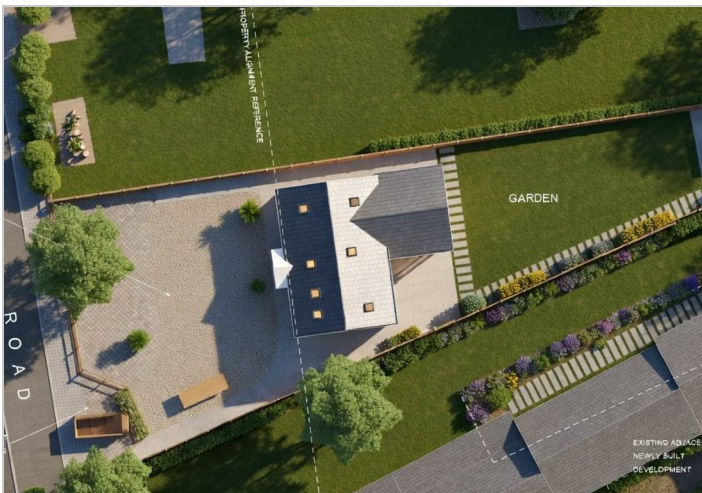
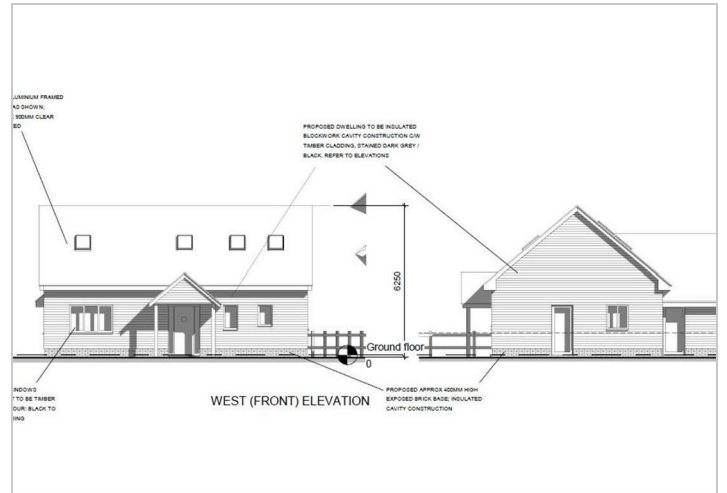
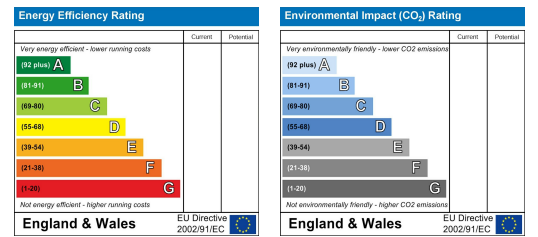
# Floor Plan



# Area Map



# Energy Efficiency Graph



These particulars, whilst believed to be accurate are set out as a general outline only for guidance and do not constitute any part of an offer or contract. Intending purchasers should not rely on them as statements of representation of fact, but must satisfy themselves by inspection or otherwise as to their accuracy. No person in this firm's employment has the authority to make or give any representation or warranty in respect of the property.

2-4 Runwell Road, Wickford, Essex, SS11 7AB

Tel: 01268 730707 Email: [info@cowlingandpayne.co.uk](mailto:info@cowlingandpayne.co.uk) <https://www.cowlingandpayne.co.uk>