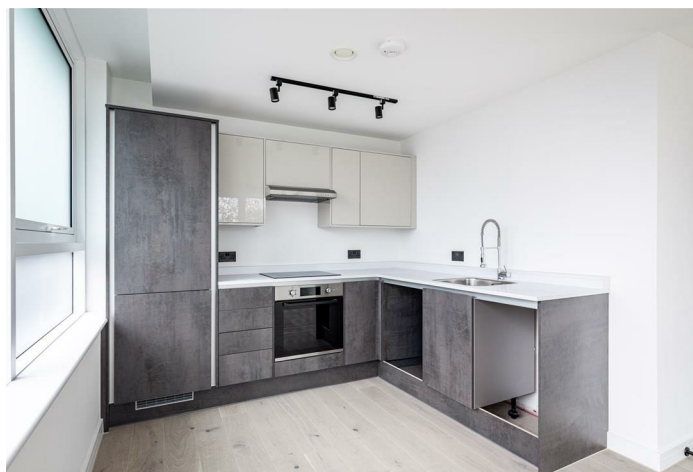


LEASEHOLD



Apartment (EPC Rating:)

CHISWICK HIGH ROAD
LONDON, W4 4AZ

£585,000

ALEXANDER STEER
Estate Agents

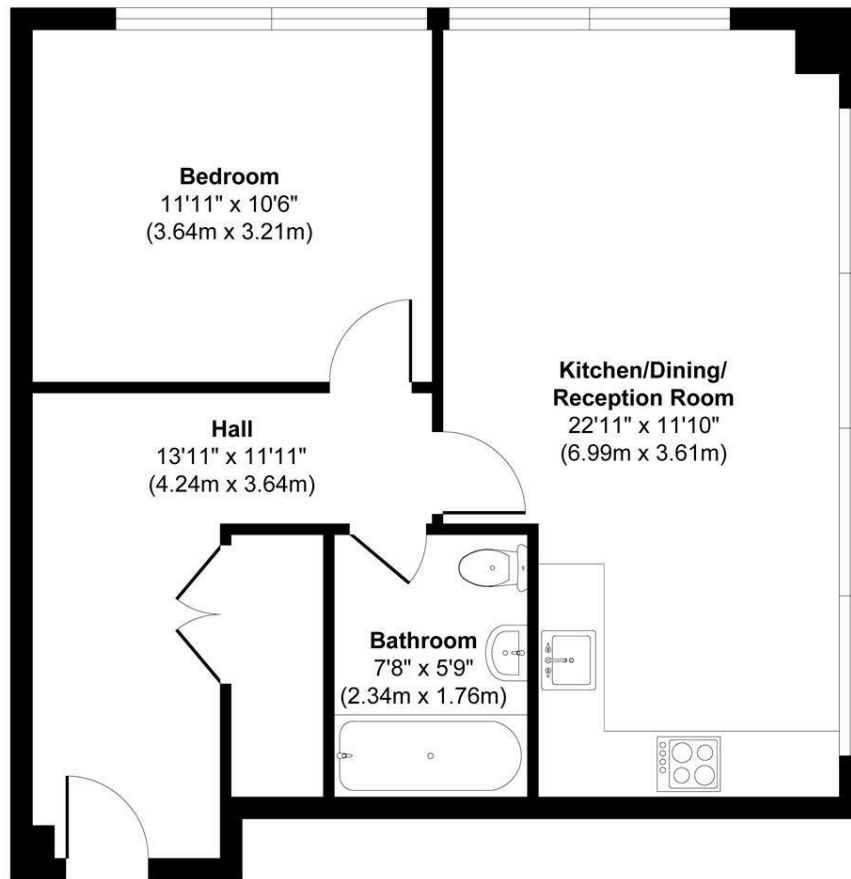


1 BEDROOM APARTMENT LOCATED IN LONDON

An exciting modern one bedroom apartment. The property is located very conveniently where amenities, transport, green spaces and entertainment are all on your doorstep.

Marlborough House is located on Chiswick High Road within an impressive modern building. Being on the high street, you have all of the fantastic Chiswick shops, restaurants, cafes and pubs on your door step. You are within five minutes walk to local green spaces such as Turnham Green along with local transport links in Chiswick Park (District Line - Ealing) and Gunnersbury (Overground & District - Richmond). Local bus links are also available. Larger green spaces and restaurants on the riverside, Kew Green and Chiswick House are also not far away.





Fifth Floor

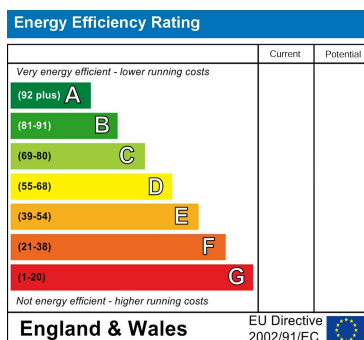
Approx. Gross Internal Floor Area 563 sq. ft / 52.33 sq. m

Illustration for identification purposes only, measurements are approximate, not to scale.

Produced by Elements Property

Council Tax Band

Energy Performance Graph



Call us on

0203 822 0111

hello@alexandersteer.co.uk

alexandersteer.co.uk



@ALEXANDERSTEERPROPERTY

Agents Note: Whilst every care has been taken to prepare these particulars, they are for guidance purposes only. All measurements are approximate and are for general guidance purposes only and whilst every care has been taken to ensure their accuracy, they should not be relied upon and potential buyers are advised to recheck the measurements.

ALEXANDER STEER
Estate Agents