



WESTWOODLEBER
LET US GUIDE YOU HOME

Eldon Road, Hoddesdon, EN11 0BH
Guide price £775,000



Eldon Road, Hoddesdon, EN11 0BH

Westwood Leber is delighted to present this exceptional four-bedroom detached family home, situated in the highly sought-after location of Dobbs Weir. This stunning property boasts breathtaking lake views from the rear, with direct access to a private lake via a charming bridge. The current owners have tastefully updated this excellent family home, creating a deceptively spacious and versatile living space throughout, with further potential to extend subject to planning permission. The property features an open-plan kitchen/breakfast room, a large free-flowing lounge with dual aspect to the rear, dining room, utility room, and downstairs cloakroom. The entrance hall provides a grand welcome.

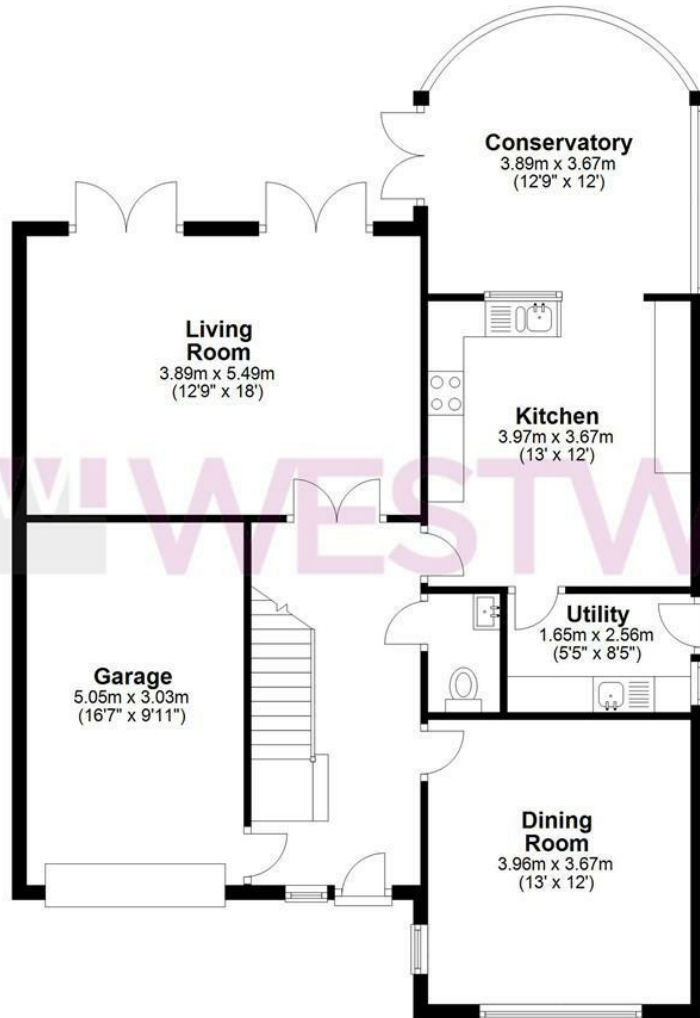
The accommodation is completed by four double bedrooms, including an en-suite bathroom suite in the master bedroom, and a three-piece bathroom suite. Externally, the property boasts a beautifully landscaped rear garden, private parking, and a garage. We strongly recommend an internal viewing to appreciate the property's full potential.



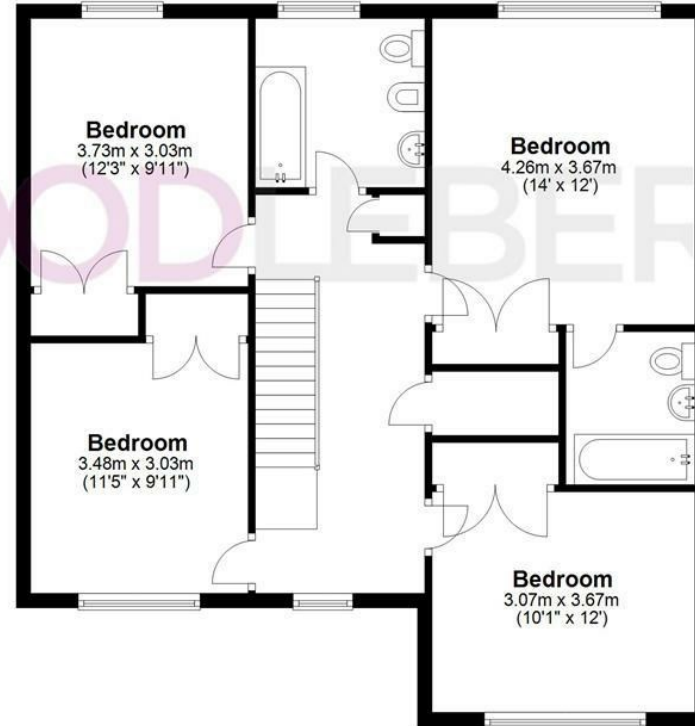
W WESTWOODLEBER

W WESTWOODLEBER
LET US GUIDE YOU HOME

Ground Floor
Approx. 97.3 sq. metres (1047.3 sq. feet)



First Floor
Approx. 80.1 sq. metres (862.7 sq. feet)



Total area: approx. 177.4 sq. metres (1910.0 sq. feet)

THE FLOORPLAN IS FOR ILLUSTRATIVE PURPOSES ONLY AND IS NOT TO SCALE. Measurements and features are approximate and may differ from the actual property. Verify all details independently; no liability is accepted for errors or omissions.

Property marketing provided by www.fotomarketing.co.uk









WESTWOODLEBER



WESTWOODLEBER



WESTWOODLEBER



WESTWOODLEBER

