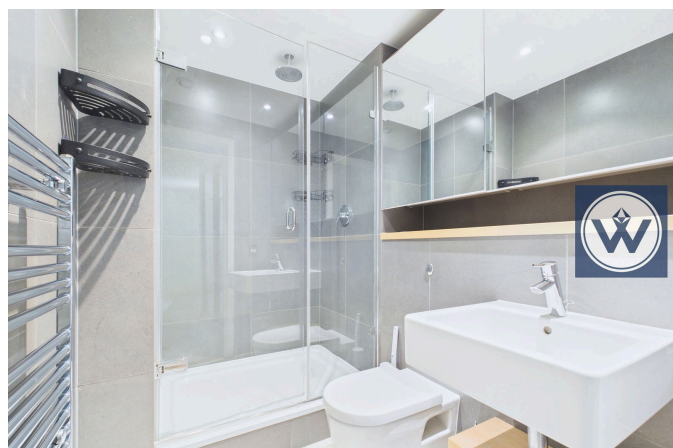
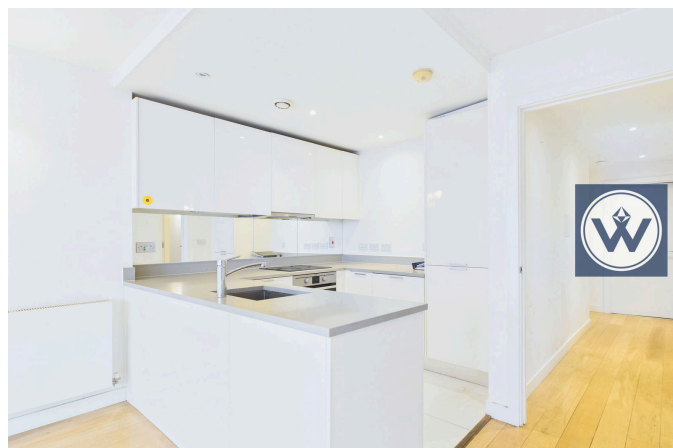


Cardinal Building, Station Approach, Hayes, London, UB3 4FD

Guide Price £300,000

 2  2  1



FOURTH FLOOR - THREE BEDROOM - TWO BATHROOM - LIFT ACCESS - LEASEHOLD - 24HR CONCIERGE - GYM FACILITIES - CHAIN FREE

Henry Wiltshire are delighted to present this exceptional three-bedroom, two-bathroom luxury apartment, located on the fourth floor of the highly sought after Cardinal Building within the prestigious High Point Village development, moments from Hayes & Harlington Station.

Boasting spectacular panoramic views across North West London, this beautifully appointed home offers contemporary living at its finest and is ideal for professionals and commuters alike. The accommodation comprises three generously sized bedrooms, including an en suite to the principal bedroom, a further high specification family bathroom, a fully fitted modern kitchen with integrated appliances, and a spacious lounge featuring floor to ceiling windows that flood the apartment with natural light while showcasing the stunning outlook.

Residents enjoy access to an impressive range of on-site amenities, including a 24-hour concierge service, gymnasium, and swimming pool, all set within well-maintained landscaped grounds. Additional benefits include double glazing, gas central heating, and a secure entry-phone system.

UK Offices | Canary Wharf - E14 | Nine Elms - SE1 | Royal Docks - E16 | Bow - E3 | Hayes, Middlesex - UB3 | Manchester - M2

International Offices | Dublin | Abu Dhabi | Hong Kong | Singapore



Perfectly positioned for easy access into Central London, this apartment truly is a commuter's paradise and an outstanding opportunity to secure luxury living in a prime location.

- Three Bedroom
- Two Bathroom
- Fourth Floor
- Lift Access
- Private Balcony
- 24hr Concierge
- Gym Facilities incl Swimming Pool, Sauna, Steam Room
- Lease
- Service Charge
- Ground Rent

