

est 1979

Jeremy
Leaf & Co.



Ashbourne Avenue, London

£775,000

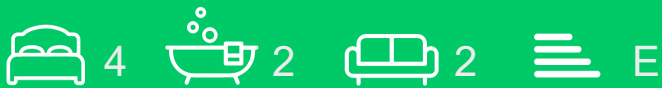
- Garden Room/Office
- Council Tax Band D
- Off-Street Parking Available
- Cellar
- Kitchen/Diner
- Four Bedrooms
- Two Bathrooms

863 High Road, London, N12 8PT
020 8446 4295

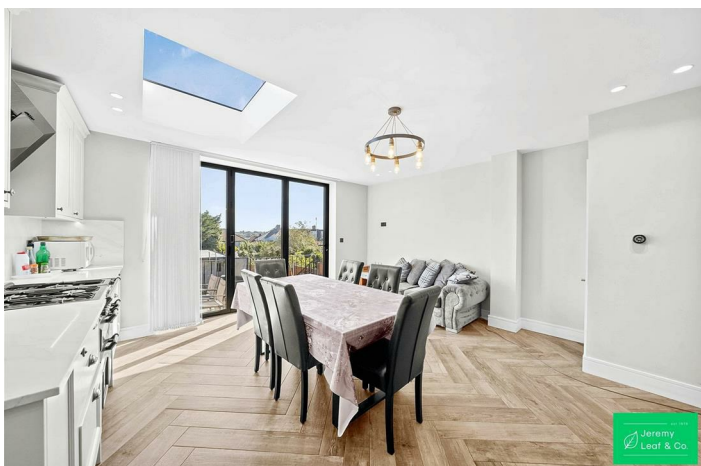
property@jeremyleaf.co.uk
<https://www.jeremyleaf.co.uk/>

Ashbourne Avenue, London, N20 0AL

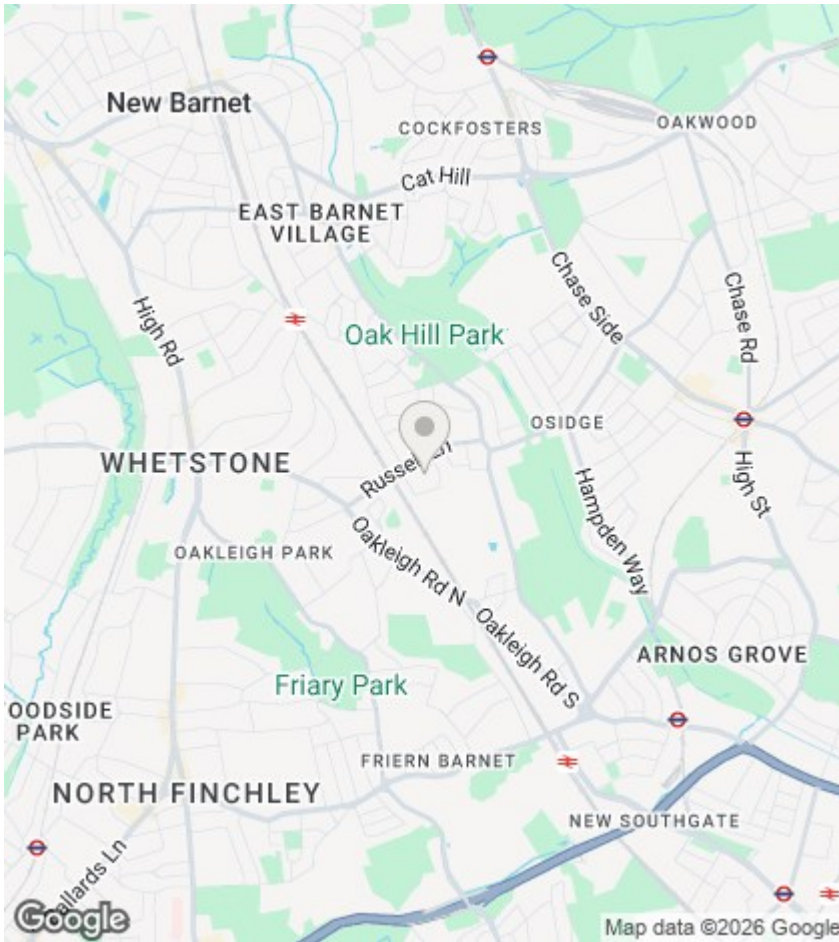
We are pleased to offer this completely refurbished four bedroom, two bathroom, semi detached property conveniently located close to local shopping amenities and transport links. Benefits include kitchen/diner, cellar, garden room/office and off-street parking . Council Tax Band D.



Council Tax Band: D







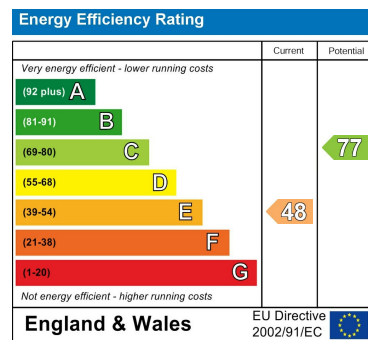
Directions

Viewings

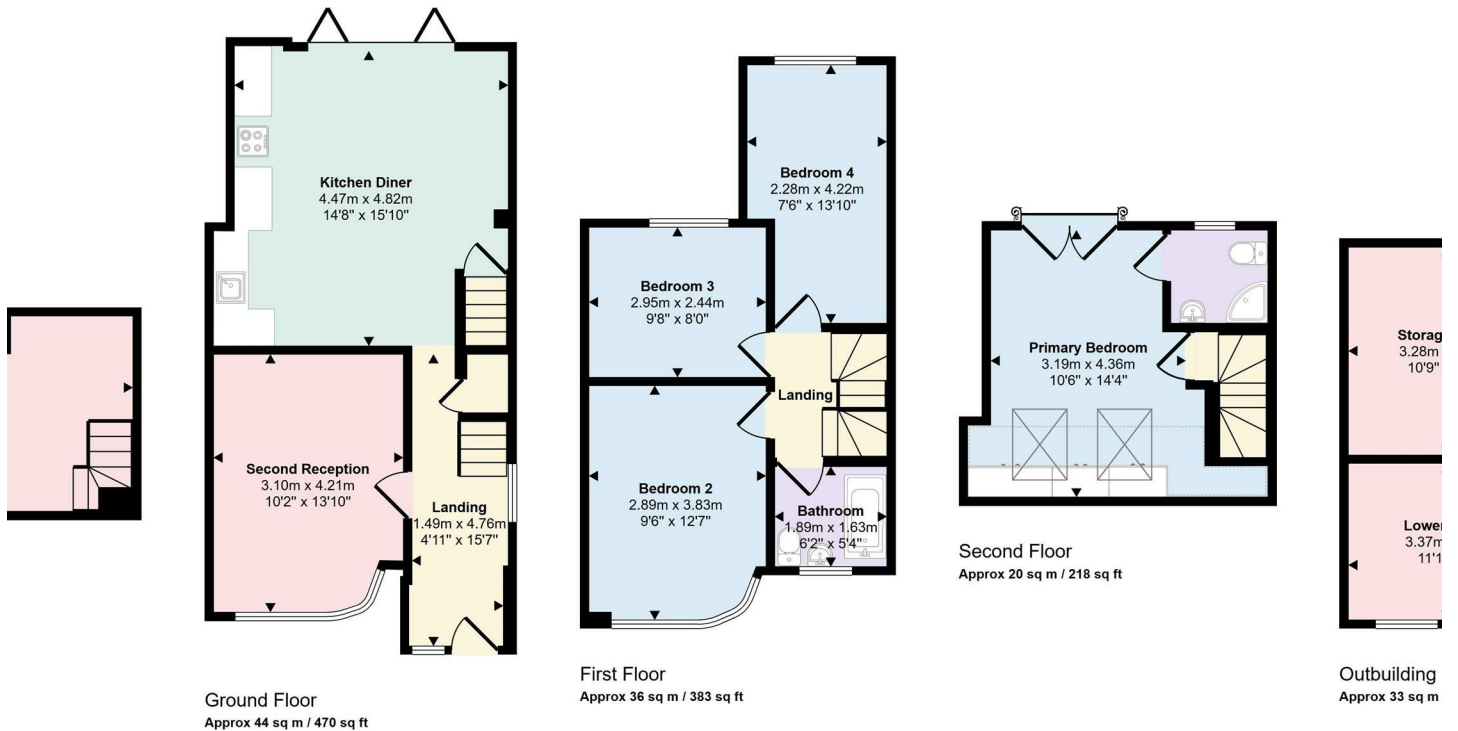
Viewings by arrangement only. Call 020 8446 4295 to make an appointment.

EPC Rating:

E



Approx Gross Internal Area
154 sq m / 1653 sq ft



This floorplan is only for illustrative purposes and is not to scale. Measurements of rooms, doors, windows, and any items are approximate and no responsibility is taken for any error, omission or mis-statement. Icons of items such as bathroom suites are representations only and may not look like the real items. Made with Made Snappy 360.