



Portsmouth Road, Woking

Offers In Excess Of £2,100,000





A house of quiet confidence and timeless beauty, The Kilns is a Georgian home reimagined for modern living, where heritage, craftsmanship and design come together in perfect balance. Set discreetly behind a gated entrance and approached via a private driveway, the house reveals itself gradually and sits effortlessly within its landscape, private, composed, and undeniably special.

There are homes that impress. And there are homes that stay with you. The Kilns is the latter - considered, composed and quietly exceptional. A home designed not just to be seen, but to be lived in beautifully. This is not a house of trends - this is a house of taste. The Kilns has been designed to adapt to the rhythm of modern life.





Behind its classic façade, The Kilns reveals a complete transformation. A meticulous back-to-brick restoration, combined with a carefully designed two-storey extension, has created a home of scale and substance, arranged across three thoughtfully planned floors.

At its heart sits a bespoke Ashley Jay kitchen, centred around a striking stone island and complemented by a walk-in pantry and utility room. This space connects effortlessly to the principal reception rooms, including a generous dining room, drawing room and an inviting snug, offering both open flow and defined areas for entertaining and everyday living. A separate morning room provides a quieter retreat, while large openings draw light through the ground floor and out to the gardens.

Upstairs, the first floor is arranged around five well-proportioned bedrooms, including a principal suite with dressing room and en suite, alongside additional bathrooms serving family and guests. A further loft room on the second floor offers flexibility as a sixth bedroom, studio or workspace.

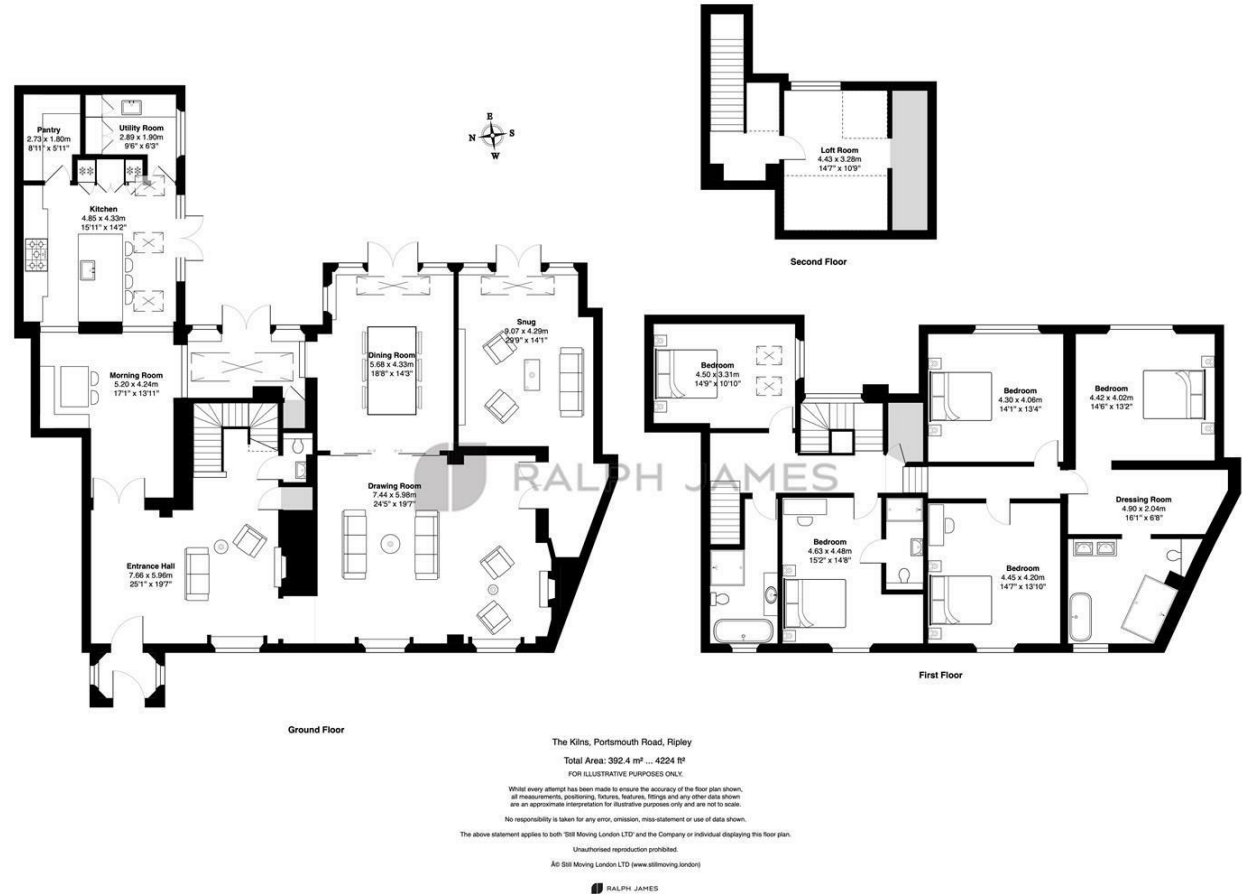
Throughout, natural limestone and Ted Todd timber flooring add warmth and texture, while bathrooms are finished with Porter & Lusso sanitaryware. Corston hardware and bespoke hardwood windows and doors from Dale Windows complete the home with a sense of quality and permanence.

The gardens extend the living space outdoors, with stone terraces for entertaining and structured planting that provides privacy and seasonal interest. Positioned on the edge of Ripley, The Kilns offers a rare balance of village charm and everyday convenience.



Need to know

- Over 4,200 sq ft of elegant, well-balanced accommodation across three floors
- Impeccably restored and extended Georgian home, blending period character with contemporary design
- Set within a private, gated plot on the edge of Ripley, offering a rare sense of seclusion
- Generous and versatile living spaces, including multiple reception rooms for both entertaining and everyday living
- Striking bespoke kitchen with adjoining pantry and utility, designed as the natural heart of the home
- Five to six bedrooms, including a beautifully arranged principal suite with dressing room
- Loft room providing flexible space for guests, work or leisure
- Landscaped gardens with stone terraces and structured planting, ideal for outdoor entertaining
- Positioned moments from Ripley village, known for its independent shops, pubs and strong community feel
- Excellent connectivity to Guildford and London, combining countryside living with everyday convenience



Interested?

dorking@ralphjames.co.uk
01306 284555

ralphjames.co.uk