

Waterloo Warehouse Waterloo Road, Liverpool, Merseyside L3 0BG

£1,300 PCM

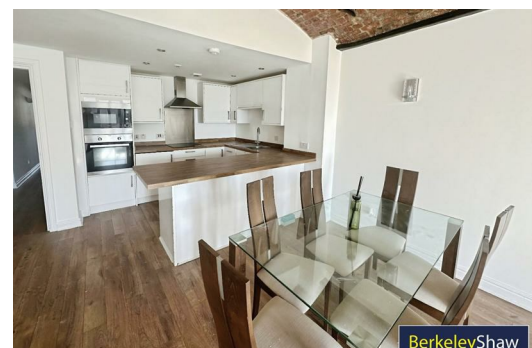
Welcome to this stunning duplex part furnished apartment TO LET located at the Waterloo Warehouse on Waterloo Road, Liverpool. This exceptional property boasts a spacious reception room that provides a warm and inviting atmosphere, perfect for both relaxation and entertaining guests. With two well-appointed bedrooms, this apartment is ideal for small families, couples, or professionals seeking a comfortable living space.

The property features two modern bathrooms, ensuring convenience and privacy for all residents. The design of the apartment maximises space and light, creating a bright and airy environment that enhances the overall living experience.

One of the standout features of this apartment is the breathtaking views overlooking the docks, offering a picturesque backdrop that changes with the seasons. Imagine enjoying your morning coffee or unwinding in the evening while taking in the serene waterside scenery.

Additionally, the apartment includes parking for one vehicle, a valuable asset in this vibrant area of Liverpool. The location is not only convenient for commuting but also places you within easy reach of local amenities, shops, and restaurants, making it a perfect choice for those who appreciate urban living.

This duplex apartment at Waterloo Warehouse is a rare find, combining modern comforts with a prime location. Don't miss the opportunity to make this beautiful property your new home.



Hallway

Bedroom 2

Inner Hallway

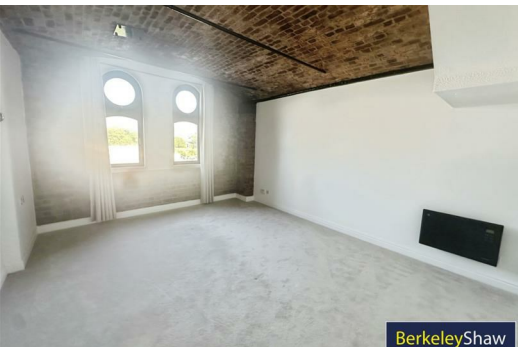
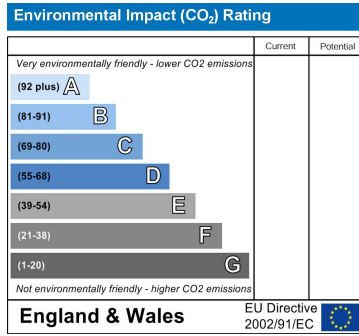
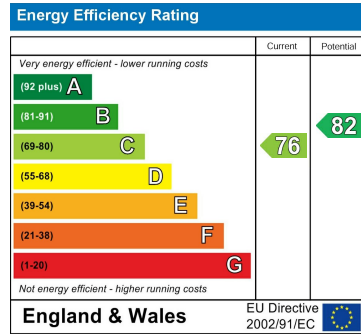
Bedroom 1

Ensuite Shower Room

Open Plan Lounge, Kitchen Diner

Bathroom

Exterior - Parking Space



Berkeley Shaw Estate Agents Limited.
Company No. 0784754

Berkeley Shaw Real Estate Limited.
Company No. 05206927

