



House - Detached (EPC Rating:)

GOLF AT 19 ST PETERS ROAD, BIRKDALE, SOUTHPORT, PR8 4BY

Per Week

£10,000

FEATURES

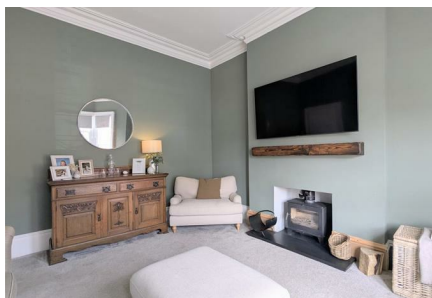
- 2026 GOLF OPEN ACCOMMODATION
- 1.5 MILES FROM ROYAL BIRKDALE
- SLEEPS SEVEN
- FOUR BEDROOMS
- SOCIAL ASPECT KITCHEN
- GAMES ROOM
- CHARMING VICTORIAN VILLA
- WALKING DISTANCE TO BIRKDALE VILLAGE



 **anthony james**
estate agents

4 Bedroom House - Detached located in Birkdale

GOLF | CHARLOTTE HOUSE, GROUND FLOOR, 35-37 HOGHTON STREET, SOUTHPORT, MERSEYSIDE, PR9 0NS



GOLF | CHARLOTTE HOUSE, GROUND FLOOR, 35-37 HOGHTON STREET, SOUTHPORT, MERSEYSIDE, PR9 0NS



GOLF | CHARLOTTE HOUSE, GROUND FLOOR, 35-37 HOGHTON STREET, SOUTHPORT, MERSEYSIDE, PR9 0NS



GOLF | CHARLOTTE HOUSE, GROUND FLOOR, 35-37 HOGHTON STREET, SOUTHPORT, MERSEYSIDE, PR9 0NS

Call us on

01704543434

golf@ajestateagents.co.uk
<https://www.ajestateagents.co.uk/properties/to-rent/sort-price-asc>

Council Tax Band



Energy Efficiency Rating		
	Current	Potential
<i>Very energy efficient - lower running costs</i>		
(92 plus) A		
(81-91) B		
(69-80) C		
(55-68) D		
(39-54) E		
(21-38) F		
(1-20) G		
<i>Not energy efficient - higher running costs</i>		
England & Wales	EU Directive 2002/91/EC	

Agents Note: Whilst every care has been taken to prepare these particulars, they are for guidance purposes only. All measurements are approximate and are for general guidance purposes only and whilst every care has been taken to ensure their accuracy, they should not be relied upon and potential buyers are advised to recheck the measurements.

