



## Glenthorne Road, W6

£922 Per week

An excellent opportunity to rent a two bedroom, two bathroom apartment situated within the popular Sovereign Court development. The apartment comprises of an open plan kitchen, reception room, and a private balcony. Further benefits include 24 hour concierge, gym, lift service and communal gardens.

Sovereign Court is situated ideally close to shops, restaurants and amenities of King Street and is just 0.1 miles from Hammersmith Tube Station.

### Features

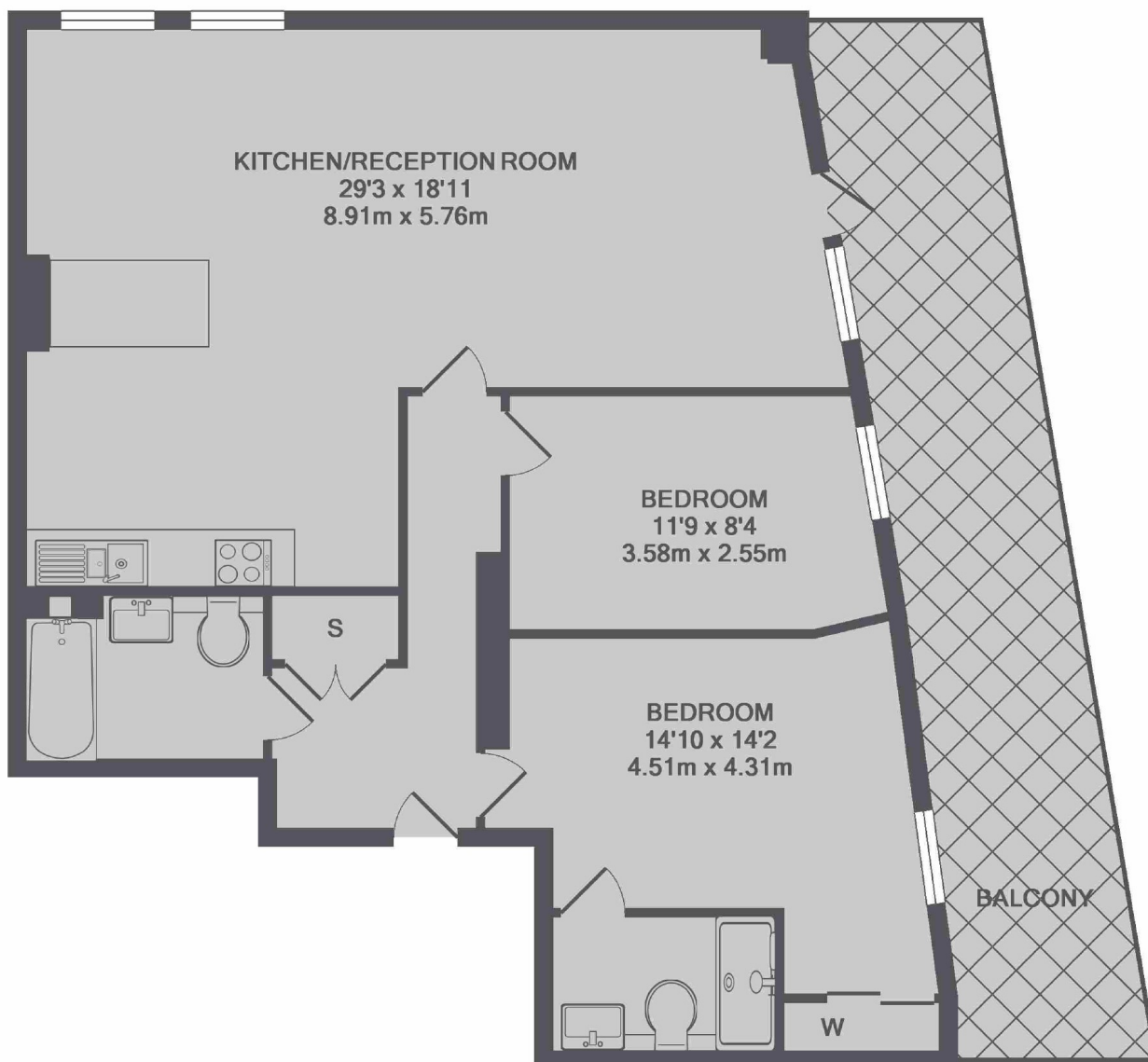
- New Build
- Two Bedrooms
- Two Bathrooms
- Balcony
- Modern Living
- Good Transport Links



**Glenthorne Road, W6**



# Glenthorne Road, London, W6



TOTAL APPROX. FLOOR AREA 909 SQ.FT. (84.4 SQ.M.)