



## Frensham Drive, SW15

### £275,000

A bright, split level Maisonette offering 673 Sq.Ft of living space arranged over two floors.

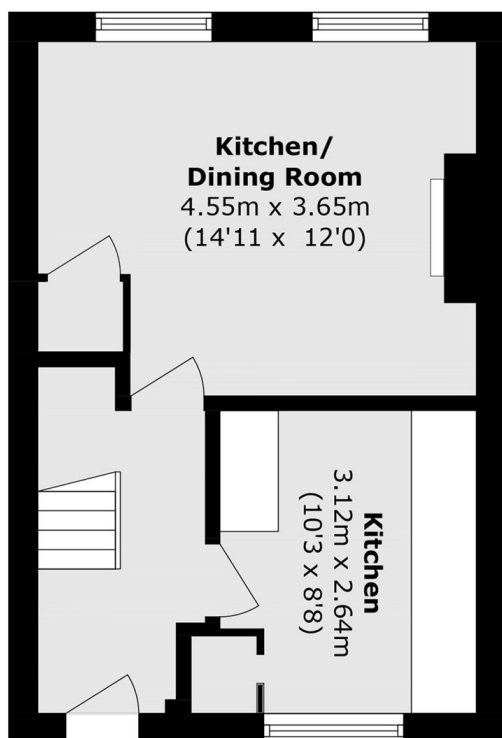
Featuring two double bedrooms, a large reception room and a separate kitchen flooded with natural light.

Frensham Drive is between Putney and Kingston, just off the A3. The 85 and 265 buses stop nearby and go into Putney or Kingston. The house is in Wandsworth Borough and therefore benefits from famously low council taxes.

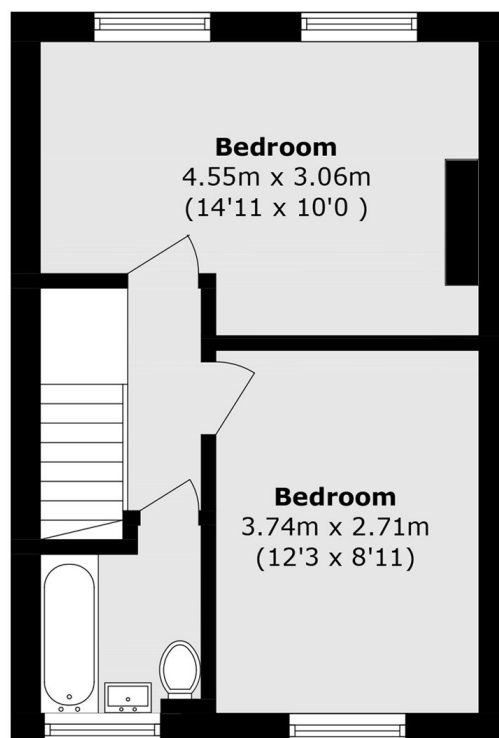
### Features

- Two Bedrooms
- Chain Free
- One Bathroom
- 673 sqft
- Split Level
- Own Front Door

# Frensham Drive, London, SW15



**Second Floor**



**Third Floor**

Total area (approx.): 62.5 sq. m (672.75 sq. ft)