





Tom Price Close

Cheltenham

NO ONWARD CHAIN Ground floor maisonette in central Fairview. Features private entrance, open-plan living, modern kitchen, double bedroom, stylish shower room, courtyard, and allocated parking.

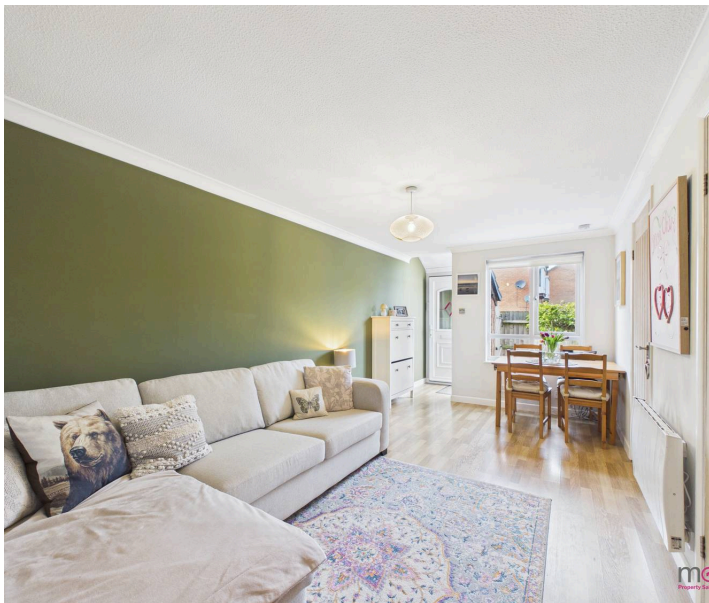
Council Tax band: A

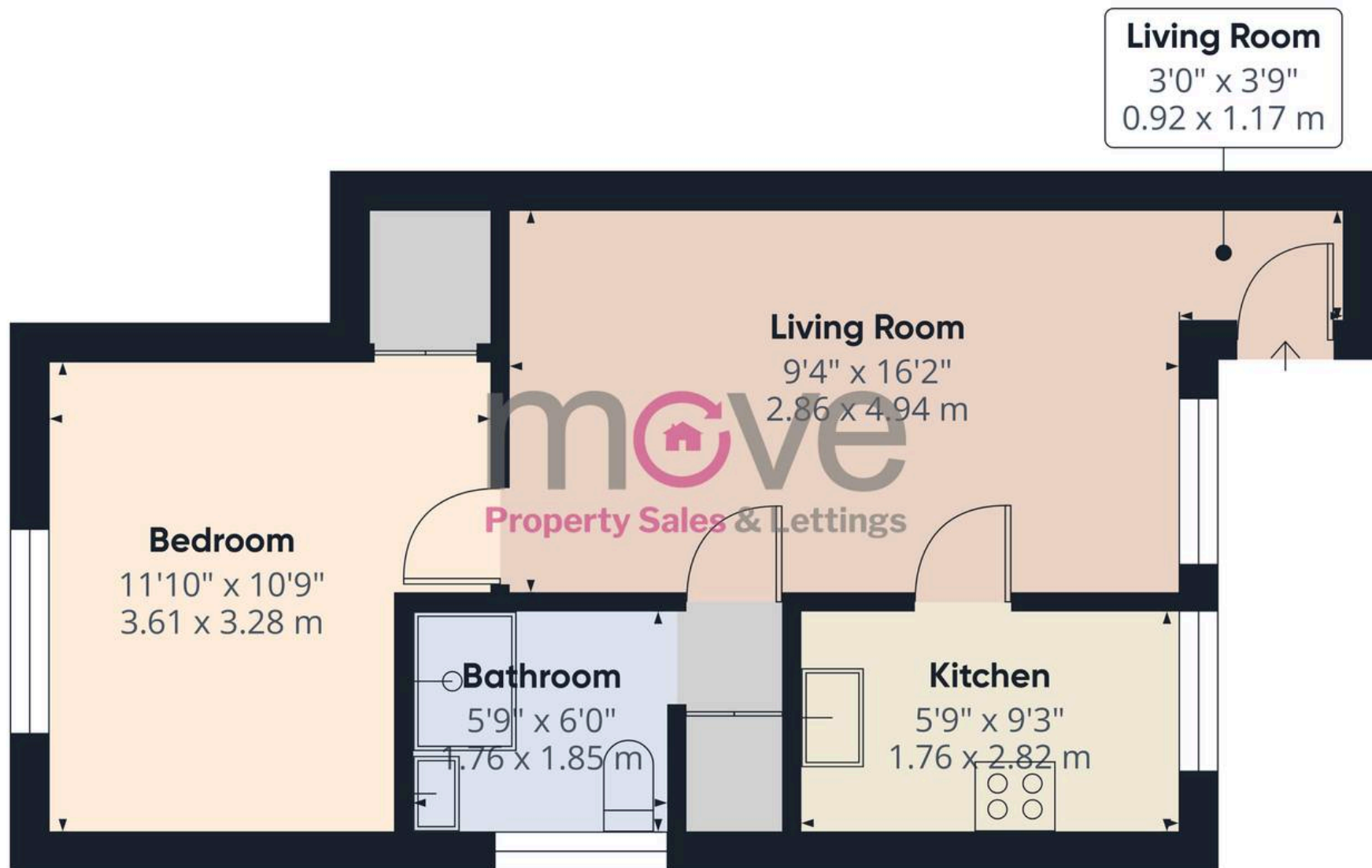
Tenure: Freehold

EPC Energy Efficiency Rating: E

EPC Environmental Impact Rating: D

- Ground Floor Maisonette
- NO ONWARD CHAIN
- Open Plan Living/Dining Area
- Ideal for First Time Buyers or Investment
- Enclosed Private Courtyard Garden
- Spacious Double Bedroom
- Private Entrance
- Recently Modernised Shower Room
- Allocated Off Road Parking
- Nearby To Town Centre and Brewery Quarter





Approximate total area⁽¹⁾

389 ft²
36.2 m²

(1) Excluding balconies and terraces

Calculations reference the RICS IPMS 3C standard. Measurements are approximate and not to scale. This floor plan is intended for illustration only.

GIRAFFE 360







Move Estate Agents Cheltenham

1 The Clarence Clarence Parade, Cheltenham - GL50 3NY

01242 257333

cheltenham@move.uk.net

move.uk.net/

move
Property Sales & Lettings