



Platts Lane

Hampstead, NW3

£8,500 per month
(£1,961.54 per week)

A spacious 6 bedroom family house over 3 floors situated close to Hampstead Heath and within walking distance to the fashionable shops and amenities of Hampstead Village (Northern Line). The house benefits from a host of natural light, hard wood floors, high ceilings, spotlights and a lovely rear lawned garden as well as plenty of storage in the basement. Accommodation comprises reception room with ornamental fireplace, separate dining room, modern style kitchen breakfast room, 6 double bedrooms, 3 bathrooms, guest cloakroom, utility room.



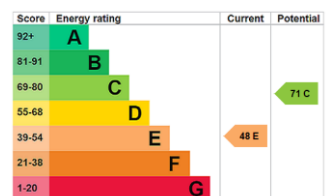
Platts Lane

Hampstead, NW3

- A Spacious Family House Over 3 Floors
- 6 Bedrooms, 3 Bathrooms, 2 Receptions, Open Plan Fully Fitted Kitchen
- Hard Wood Floors, High Ceilings, Lovely Rear Lawned Garden, Storage in the Basement
- Situated Close to Hampstead Heath, Within Walking Distance to the Fashionable Shops and Amenities of Hampstead Village (Northern Line)



Minimum Term: 12 months
Deposit Required: £11,769.23
Local Authority: London Borough Of Camden
Council Tax Band: H
EPC Rating: E
Unfurnished



Chestertons Hampstead Lettings

55-56 Hampstead High Street
Hampstead
London
NW3 1QH
hampsteadlettingsusers@chestertons.co.uk
02077941125
chestertons.co.uk

Additional tenant charges apply (fees apply to non-AST tenancies only)
Tenancy Agreement Fee: £300
References per Tenant/Guarantor: £60
Inventory check (approx. £100 – £250 inc. VAT)
chestertons.co.uk/property-to-rent/applicable-fees

Platts Lane, London, NW3

Approximate Gross Internal Floor Area = 295.1 sq m / 3177 sq ft (including Restricted Height Area)

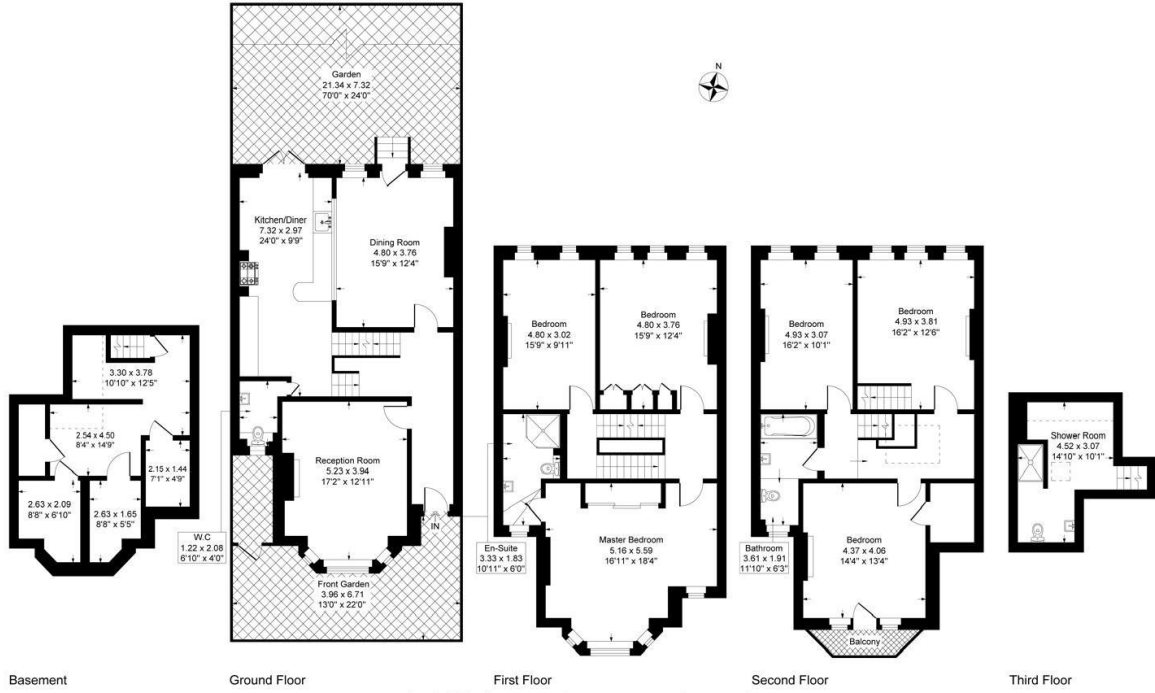


Illustration for identification purposes only, measurements are approximate, not to scale.

