



Rainsford Road, NW10

£200,000

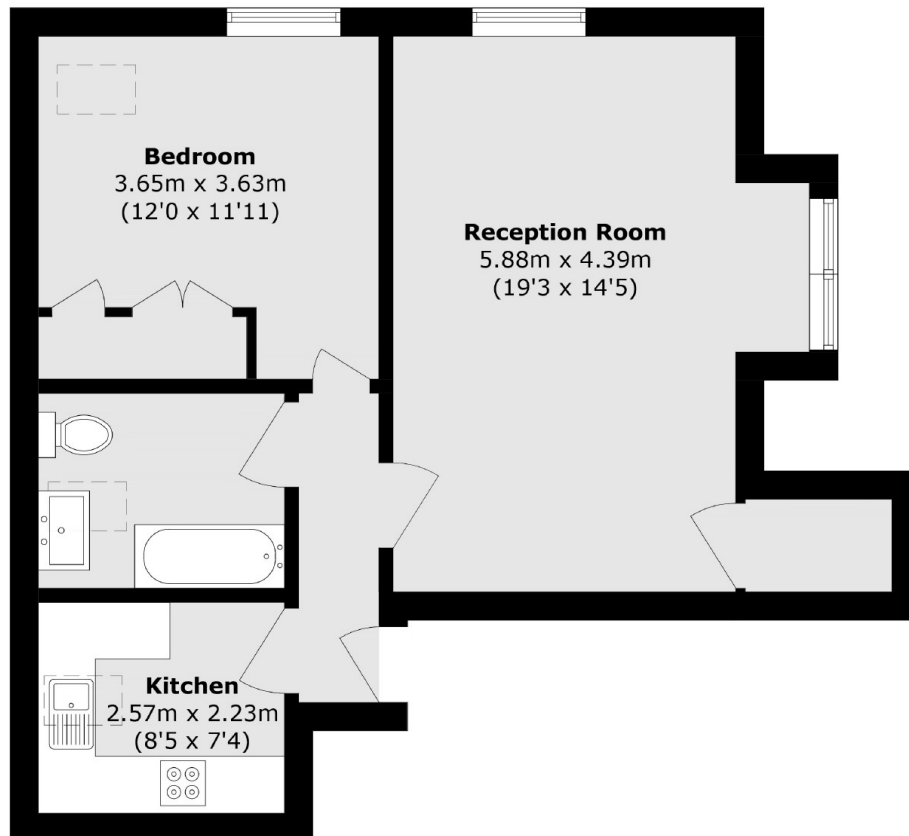
A one bedroom top floor apartment situated within a well maintained purpose built development. The property has a large dual aspect reception room which allows an enormous amount of natural light, a separate kitchen along with ample built in storage throughout. Rainsford court has a private parking space and would be perfect for first time buyers and investors,

Located within a five minute walk from Park Royal station (Piccadilly Line) and just over ten minutes from Hanger Lane station (Central Line) With a ten minute walk from Royal Leisure Park which has a multitude of amenities.

Features

One Bedroom
Top Floor
580 Sq ft
Separate Kitchen
Private Allocated Parking
No Onward Chain

Rainsford Road,
London, NW10



Total area (approx.): 53.6 sq. m (576.9 sq. ft)

Dexters

Acton
171 High Street
London
W3 6LP
Sales
020 8896 2112

Energy Rating: C. We aim to make our particulars both accurate and reliable. However they are not guaranteed; nor do they form part of an offer or contract. If you require clarification on any points then please contact us, especially if you're traveling some distance to view. Please note that appliances and heating systems have not been tested and therefore no warranties can be given as to their good working order.

 **RICS** | Regulated
Estate Agent
and Letting Agent

[dexters.co.uk](https://www.dexters.co.uk)