



Guide Price
£475,000

Freehold

4x  3x  3x 

**Imperial Way, Singleton,
Ashford, Kent, TN23**

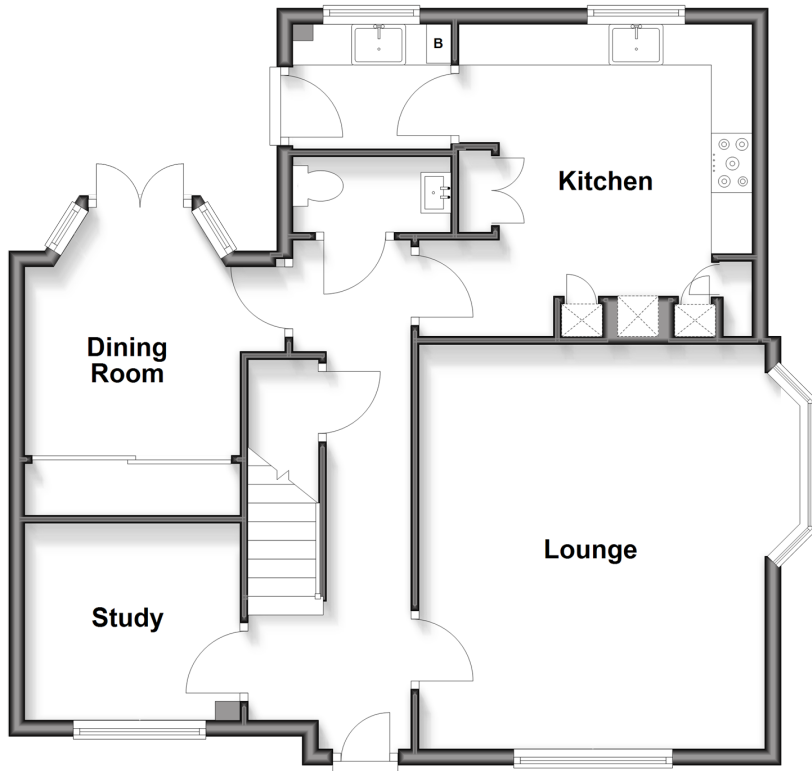
OVER 60?

Secure this property
for up to **59% less!**

Wards
Helping you move forwards

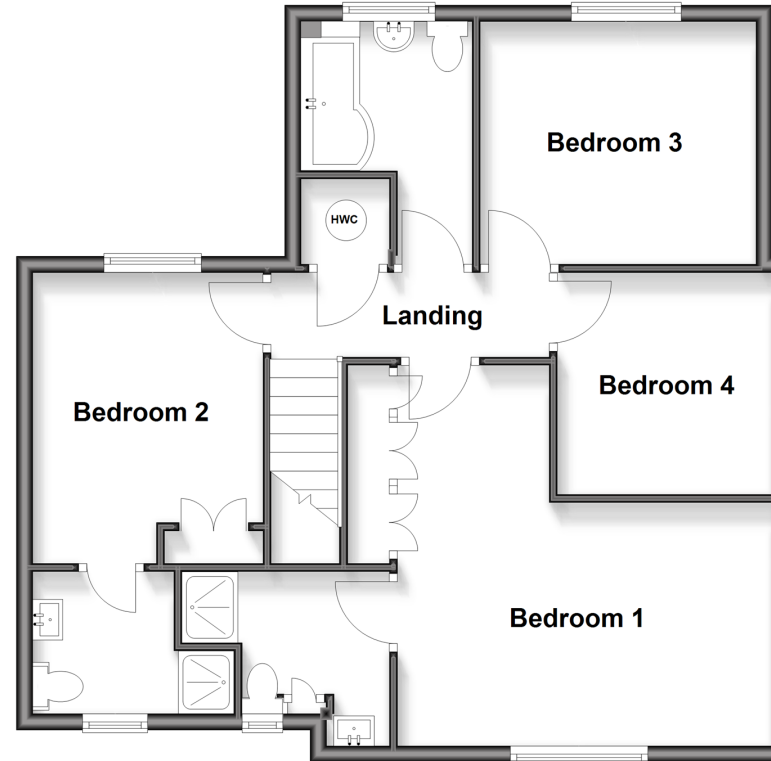
Ground Floor

Approx. 70.9 sq. metres (762.7 sq. feet)



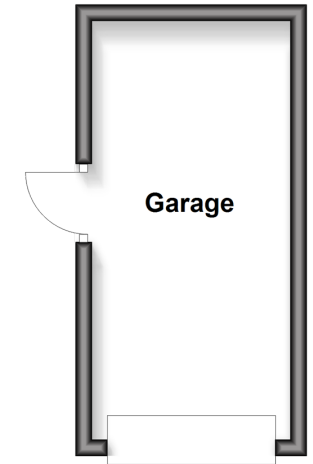
First Floor

Approx. 68.9 sq. metres (741.5 sq. feet)



Outbuilding

Approx. 12.6 sq. metres (135.7 sq. feet)



Accommodation

GROUND FLOOR

Entrance Hall

Study : 8'8 x 7'9 (2.64m x 2.36m)

Lounge: 16'2 x 15'5 (4.93m x 4.70m)

Dining Room: 9'7 x 8'8 (2.92m x 2.64m)

Cloakroom

Kitchen: 12'6 x 11'3 (3.81m x 3.43m)

Utility Room: 6'4 x 4'2 (1.93m x 1.27m)

FIRST FLOOR

Landing

Bedroom 1 : (L-shaped) 15'3 x 10'1 (4.65m x 3.08m) plus 7'1 x 5'5 (2.16m x 1.65m)

En-suite Shower Room

Bedroom 2: 12'3 x 9'0 (3.74m x 2.75m)

En-suite Shower Room

Bedroom 3: 11'8 x 9'7 (3.56m x 2.92m)

Bedroom 4: 9'7 x 8'9 (2.92m x 2.67m)

Bathroom

OUTBUILDING

Garage

OUTSIDE

Rear Garden



Main features

- Well presented throughout
- Utility room
- Guest cloakroom
- Refitted kitchens and bathrooms
- Two en-suite shower rooms
- Study/optional bedroom five
- Garage and driveway parking
- Close to local schools, shops and transport



Nearest Schools

Primary Schools: Great Chart Primary 0.2 miles, John Wesley Primary 0.4 miles, Beaver Green Primary 0.7 miles

Secondary Schools: The Wyvern School (Buxford) 0.7 miles, John Wallis C of E Academy, Ashford 1.1 miles,



Transport Information

Train Stations: Ashford International 2.6 miles, Charing 5.2 miles, Ham Street 6.4 miles



Address

Imperial Way, Singleton, Ashford, Kent, TN23



Directions

For directions to this property please contact us.



Wards
Helping you move forwards

Call Ashford Branch 01233 639531 ■ wardsof Kent.co.uk



■ Through a Homewise Home For Life Plan people aged 60+ can secure this property for up to 59% less, by purchasing a Lifetime Lease



12243590/20260326/RK/JRB