



Hamlet Gardens, W6

£200,000

This lovely light studio flat is located in a portered block.

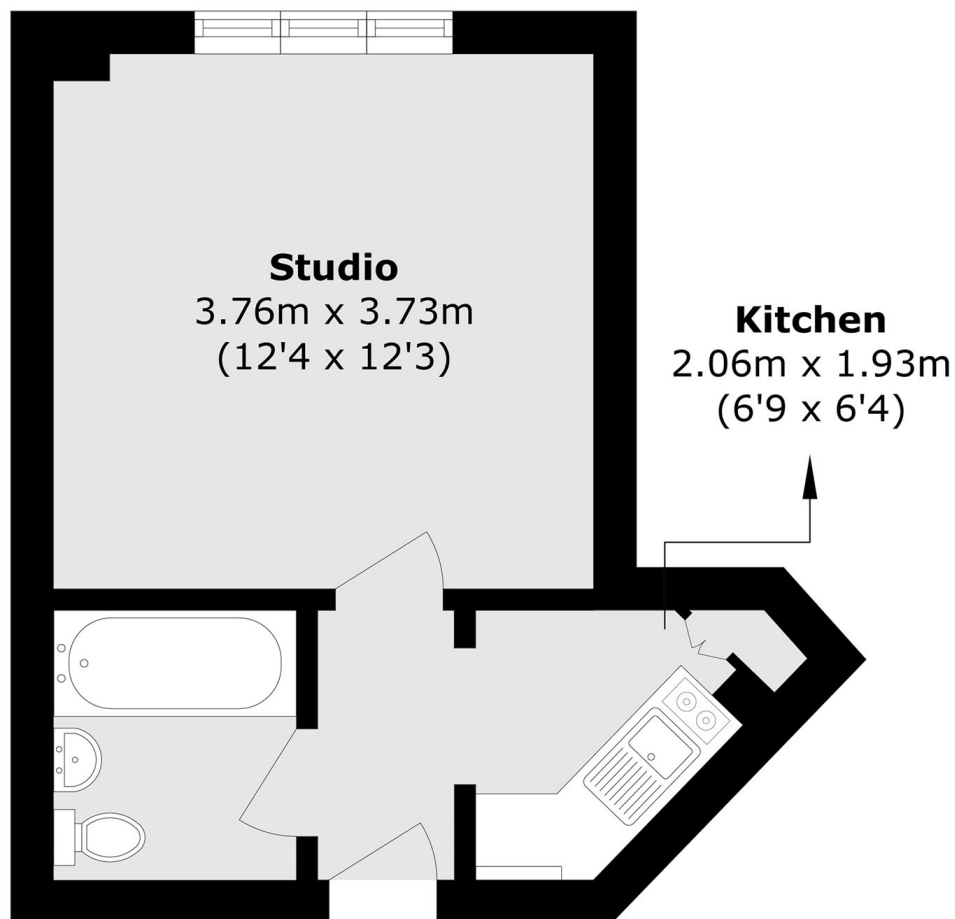
The flat is along the beautiful road of Hamlet Gardens just around the corner from Ravenscourt Park. The flat would make a wonderful home and is ideal for first time buyers or as a rental investment. Hot water and heating is included within the service charges.

Kings Court is ideally placed for access to the host of amenities at Hammersmith Broadway and King Street, and only moments from the green open spaces of Ravenscourt Park.

Features

- Studio Apartment
- Bright Flat
- Porter
- Lift
- Ravenscourt Park
- No Chain

Hamlet Gardens, London, W6



Fifth Floor

Total area (approx.): 23.2 sq. m (249.7 sq. ft)