



Guide Price
£150,000

Leasehold

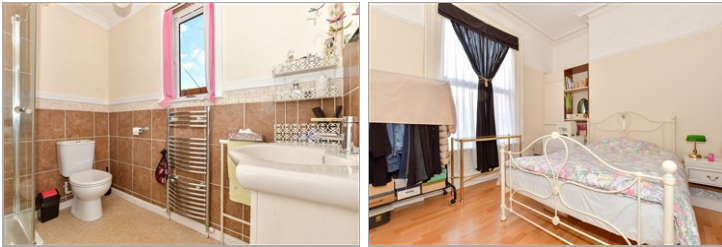
1x  1x  1x 

**Grosvenor Place,
Margate, Kent, CT9**

OVER 60?

Secure this property
for up to **59% less!**

Wards
Helping you move forwards



Main features

- Excellent first time purchase
- Upper ground floor apartment in a great location
- Close to Dreamland and the sea
- Spacious bright rooms
- Rare valuable private outside patio
- Set on a one way street you can enjoy peace and quiet in a central location

Accommodation

UPPER GROUND FLOOR

Hallway

Lounge: 17'5 x 15'1 (5.31m x 4.60m)

Bedroom: 14'3 x 13'0 (4.35m x 3.97m)

Shower Room : 7'11 x 5'11 (2.41m x 1.80m)

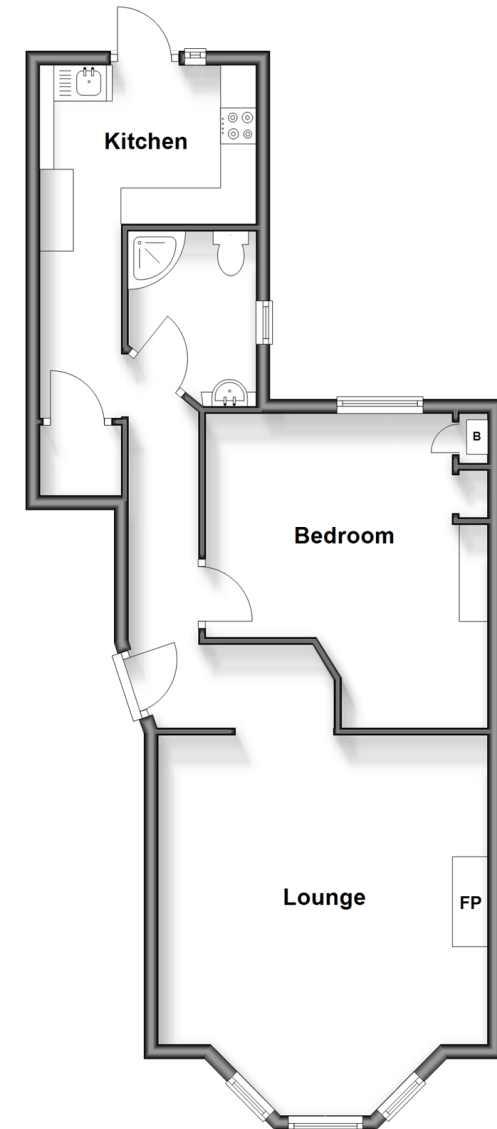
Kitchen: 10'0 x 6'4 (3.05m x 1.93m)

OUTSIDE

Rear Garden

Upper Ground Floor

Approx. 61.0 sq. metres (656.6 sq. feet)



Call Cliftonville - 01843 227447 ■ wardsofKent.co.uk

- A private rental licensing scheme applies to some properties in this area, please contact us before proceeding
- Legal advice should be taken to verify fixtures/fittings, planning, alterations and/or lease details
- Appliances & services are untested, dimensions are approximate and floor plans are not to scale
- Through a Homewise Home For Life Plan people aged 60+ can secure this property for up to 50% less, by purchasing a Lifetime Lease.



15110274/20251001/DM/VH