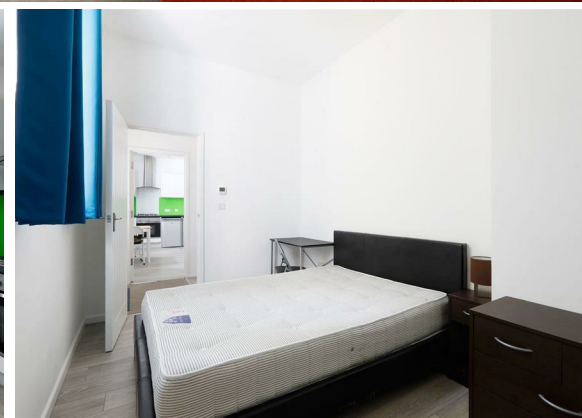




2 Bed
Flat
located in

£1,700 Per month




TAYLOR
MICHAEL
STUDENTS

DIRECTIONS

CONTACT

62 Church Road
Hove
East Sussex
BN3 2FP

E: lettings@taylormichael.agency
T:
<https://taylormichael.agency/>

Energy Efficiency Rating		
	Current	Potential
Very energy efficient - lower running costs		
(92 plus) A		
(81-91) B		
(69-80) C	80	80
(55-68) D		
(39-54) E		
(21-38) F		
(1-20) G		
Not energy efficient - higher running costs		
EU Directive 2002/91/EC 		
England & Wales		

TAYLOR
MICHAEL
STUDENTS