

SNELLERS

ESTATE AGENTS



Langdon Park, TW11

£1,850 PCM

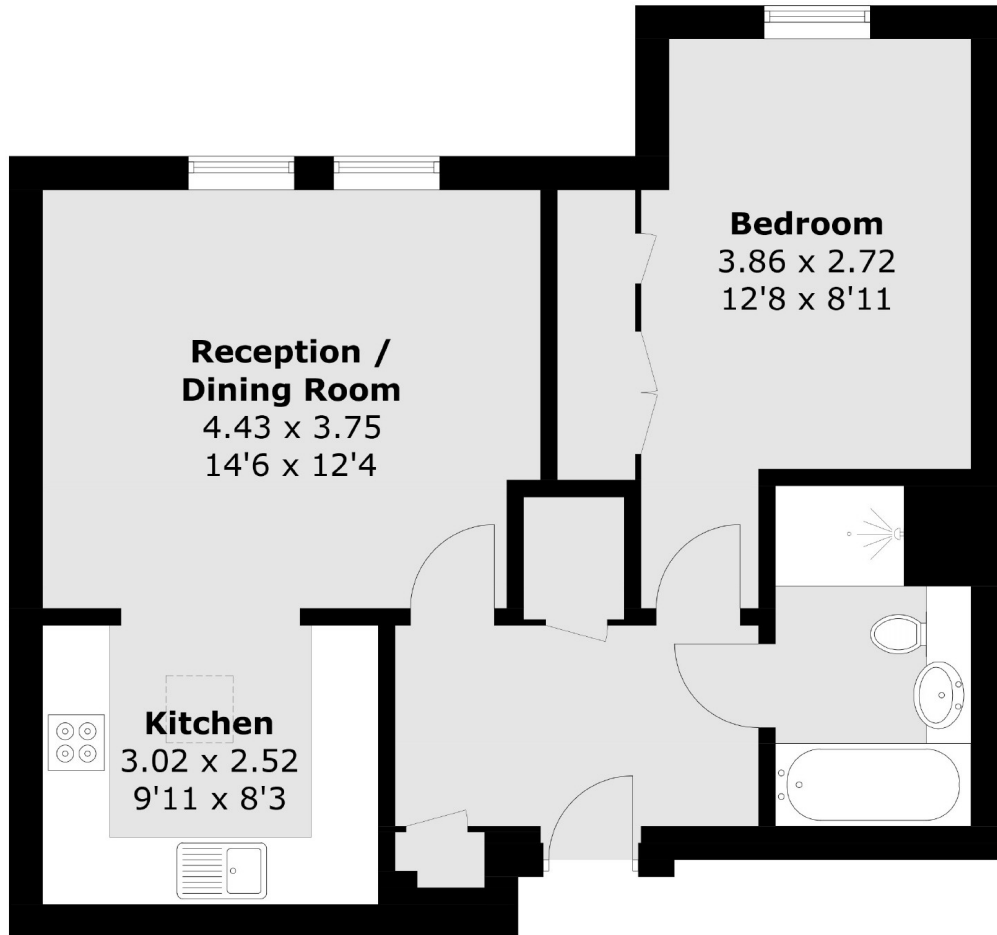
In the popular Langdon Park development is this immaculate, neutrally decorated one bedroom apartment. With a spacious lounge, allocated parking, lift access and residents gym, this property is one you don't want to miss out on!

Langdon Park is an exclusive residential development with extensive communal grounds and residents gymnasium. The Royal Bushy Park, Hampton Wick Station and Kingston Town Centre with its array of shops are all close by.

- One Double Bedroom • Allocated Parking • Separate Kitchen •
- Lift Access • Private Gym • Top Floor •

SNELLERS

ESTATE AGENTS



Total area (approx.): 54.0 sq. m (581.2 sq. ft)

Snellers Teddington Lettings
74 Broad Street
Teddington
TW11 8QX
020 8614 6140
teddingtonlettings@snellers.co.uk

Energy Rating: D We aim to make our particulars both accurate and reliable. However they are not guaranteed; nor do they form part of an offer or contract. If you require clarification on any points then please contact us, especially if you're traveling some distance to view. Please note that appliances and heating systems have not been tested and therefore no warranties can be given as to their good working order