



WHERE STANDARDS MATTER

Spencer Munson
41 High Road
South Woodford E18 2QP

Tel: 020 8989 3331

swoodford@spencermunson.co.uk
Website: spencermunson.co.uk



Sheringham Avenue, Manor Park, E12

Spencer Munson are pleased to offer you this two bedroom, two bathroom first floor conversion. This property has been recently refurbished and includes a open plan kitchen living space with white goods, Two double bedrooms, en-suite shower room and a family bathroom. This property has been newly carpeted throughout and is available now on a unfurnished basis. EPC Rating C Council Tax band B

Rent: £1,750 - Monthly



Sheringham Avenue, London, E12

Reception 1



Kitchen

Bedroom 1



En-suite/ shower room



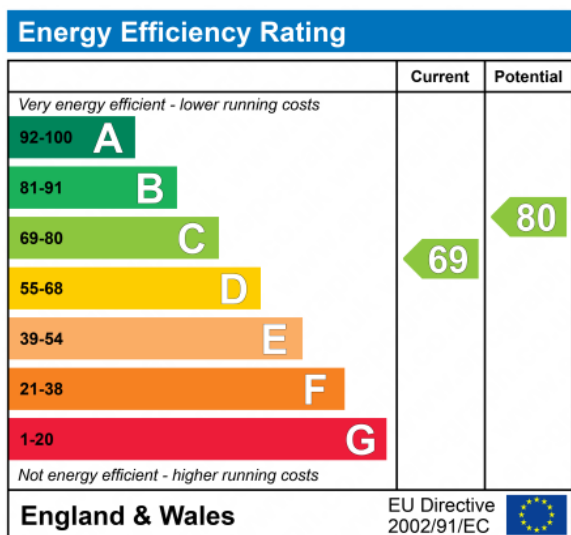
Bedroom 2



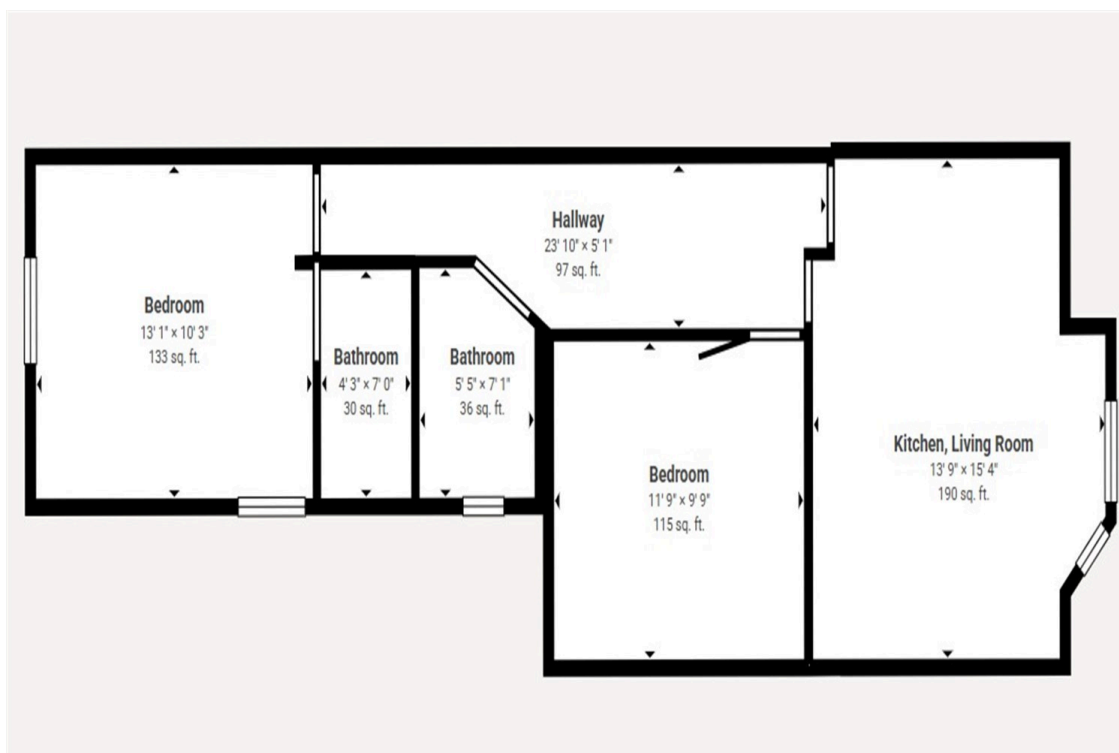
Bathroom



Front



Spencer Munson are pleased to offer you this two bedroom, two bathroom first floor conversion. This property has been recently refurbished and includes a open plan kitchen living space with white goods, Two double bedrooms, en-suite shower room and a family bathroom. This property has been newly carpeted throughout and is available now on a unfurnished basis. EPC Rating C Council Tax band B

Sheringham Avenue, London, E12**Disclaimer**

These particulars are intended to give a fair and substantially correct overall description for the guidance of intending tenants/purchasers and do not constitute an offer or part of a contract. Prospective tenants/purchasers and/or lessees should seek their own professional advice. All descriptions, dimensions, reference to condition, fixtures, fittings and necessary permissions for use and occupation and other details are given in good faith and are believed to be correct. However, intending tenants/purchasers should not rely on them as statements or representations of fact, but must satisfy themselves by inspection or otherwise as to the correctness of each of them. Fixtures and fittings shown in pictures and on viewings may well not be included in any tenancy/sale and any prospective tenant/purchaser must clarify this for themselves. All measurements and floorplans are approximate and produced as a guide in good faith. Please note that some of the furniture and decor items shown in these images have been digitally added using AI technology for illustrative purposes. The actual property may differ in appearance. Prospective buyers or renters are encouraged to visit the property in person to get an accurate representation.