



## HAMILTON ROAD, NW10

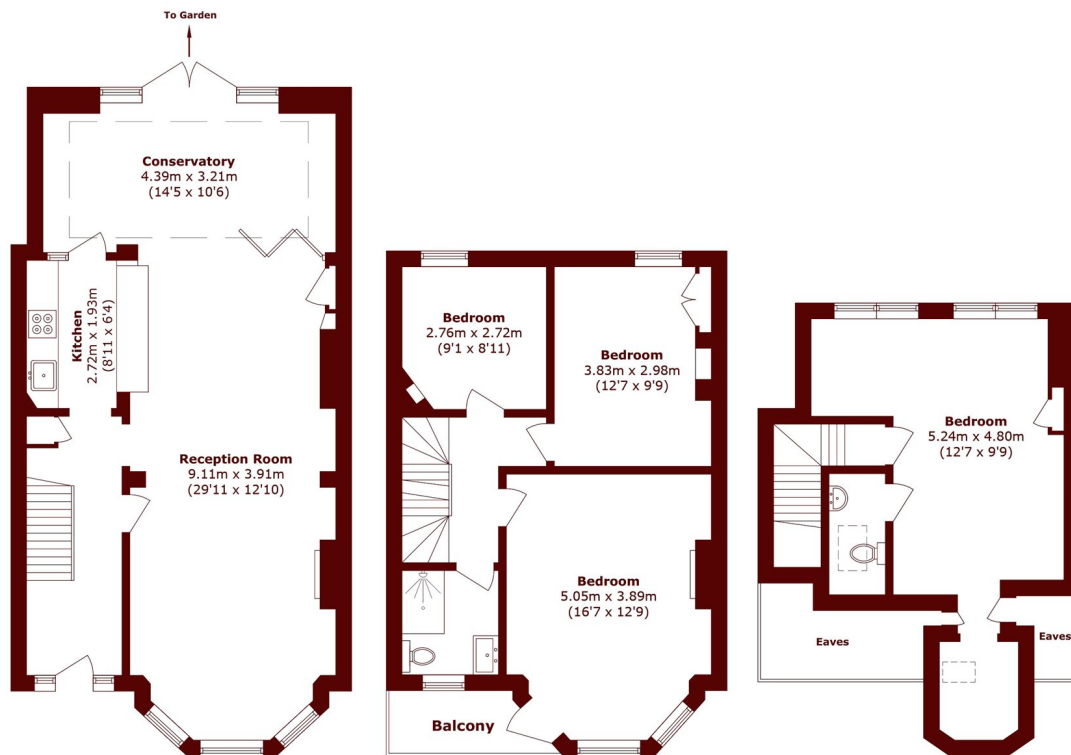
£975,000

A beautifully presented, Edwardian property situated in the heart of the Dollis Hill Estate. Within walking distance of the coveted Gladstone Park, the property offers internal living accommodation and presents an

Four Bedrooms  
Two Bathrooms  
Character Property

Period  
Freehold  
Private Garden

# STEP INSIDE HAMILTON ROAD



**Ground Floor**

**First Floor**

**Second Floor**

Total area (approx.): 144.7 sq. m (1557.5 sq. ft)  
(Excluding Eaves)  
Balcony area (approx.) 2.9 sq. m (31.2 sq. ft)

**Willesden Green**  
020 8451 0420

Energy Rating: We aim to make our particulars both accurate and reliable. However, they are not guaranteed; nor do they form part of an offer or contract. If you require clarification on any points then please contact us, especially if you're traveling some distance to view. Please note that appliances and heating systems have not been tested and therefore no warranties can be given as to their good working order

**MARSH &  
PARSONS**