



Manor Road, Old Harlow, CM17 0BE

Geoffrey Matthew Estates are delighted to offer this beautifully presented, three/four bedroom, semi detached house. Located in the highly sought after residential street of Manor Road in Old Harlow. The property has been lovingly decorated by the current owners making a ready made family home for any incoming purchaser. With a southerly facing, beautifully landscaped, rear garden measuring approximately 100ft in length with established planting, fruit garden and vegetable patch. Off street parking for multiple cars to the front, This property is certain to prove popular.

Early viewings are very highly recommended!

Guide Price £500,000

Manor Road, Old Harlow, CM17 0BE

- Three/Four Bedrooms. One Of Which Is The Loft Room
- Off Street Parking
- Sought After Location
- Semi-Detached
- Approx 100ft Rear Garden
- Close To Train Station & Amenities

Entrance Hallway

Lounge

11'1 x 17'3 (3.38m x 5.26m)

Kitchen & Dining

10'7 x 17'3 (3.23m x 5.26m)

Utility Room

First Floor Landing

Bedroom

10'7 x 11'5 (3.23m x 3.48m)

Bedroom

8'0 x 8'11 (2.44m x 2.72m)

Bedroom

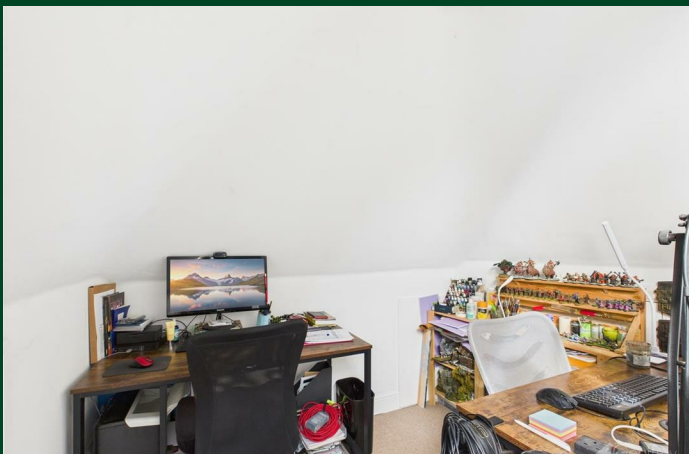
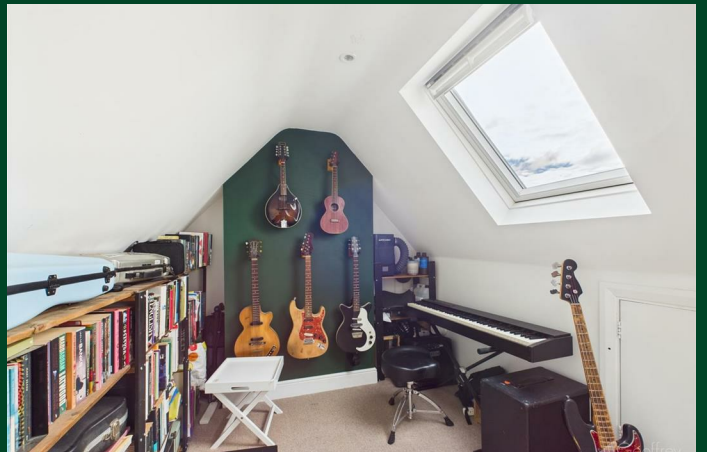
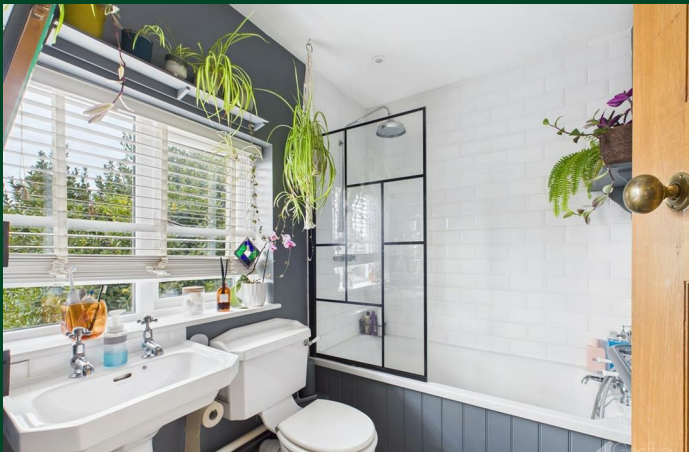
8'0 x 8'0 (2.44m x 2.44m)

Bathroom

7'3 x 5'7 (2.21m x 1.70m)

Loft Room/Bedroom

19'5 x 7'11 (5.92m x 2.41m)







Geoffrey
Matthew

