



Colney Hatch Lane, N10

£2,548 Per calendar month

This incredibly modern, three bedroom apartment is set on the ground floor of this new building in Muswell Hill. The property has two bathrooms, an open plan kitchen and access to a private terrace.

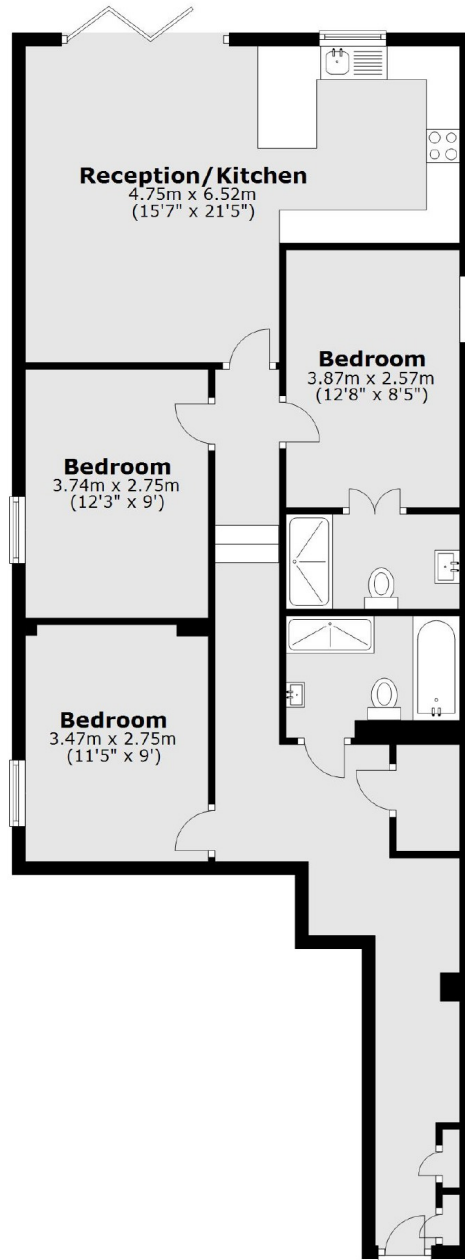
Excellent location near Muswell Hill Broadway, which offers a variety of restaurants, supermarkets and shops. The property is conveniently located closely to public transport giving easy access to Central London.

Features

- Three Double Bedrooms
- Newly Refurbished Apartment
- Ground Floor
- Open Plan Kitchen
- Private Garden
- Muswell Hill

Colney Hatch Lane, London, N10

Ground Floor



Total area: approx. 88.3 sq. metres (950.3 sq. feet)