



Cottage Grove, KT6

£430,000

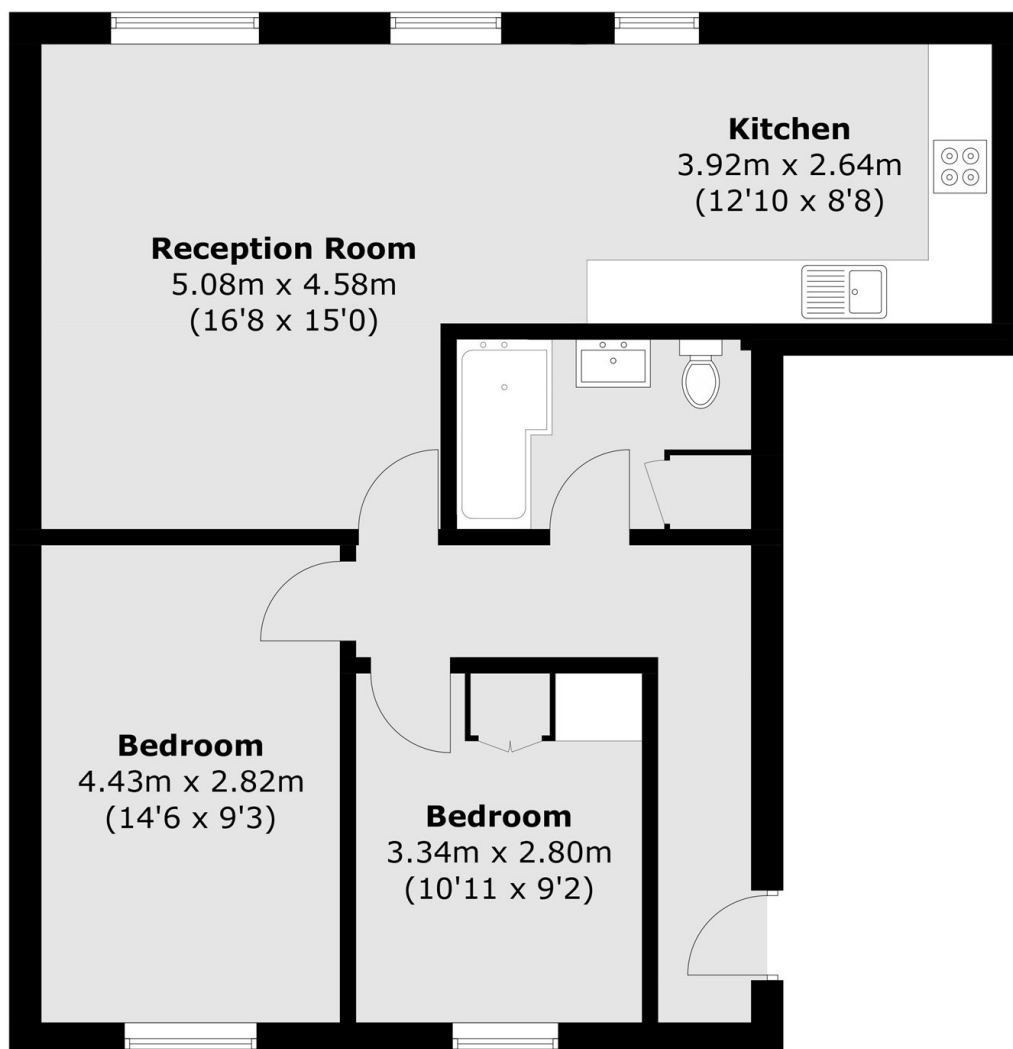
This spacious and immaculately presented first floor apartment is centrally located. Accommodation includes two double bedrooms, an open plan kitchen/living/dining room and a modern bathroom suite. Further benefits include a newly acquired share of the freehold, under cover allocated off street parking, a communal roof terrace and no onward chain.

Heron House is located on the popular Cottage Grove that is nestled in the heart of Surbiton. The buzz of Surbiton high street and the convenience of the mainline train station and its fast train in to London Waterloo, are all on your doorstep.

Features

- Two Double Bedrooms
- Share Of Freehold
- Brand New Lease
- No Onward Chain
- Allocated Off Street Parking
- Shared Roof Terrace

Cottage Grove, Surbiton, KT6



Total area (approx.): 68.0 sq. m (731.9 sq. ft)