



Frenchmans Creek Bosham Hoe, Bosham - PO18 8ET

Guide Price £3,750,000 - FREEHOLD



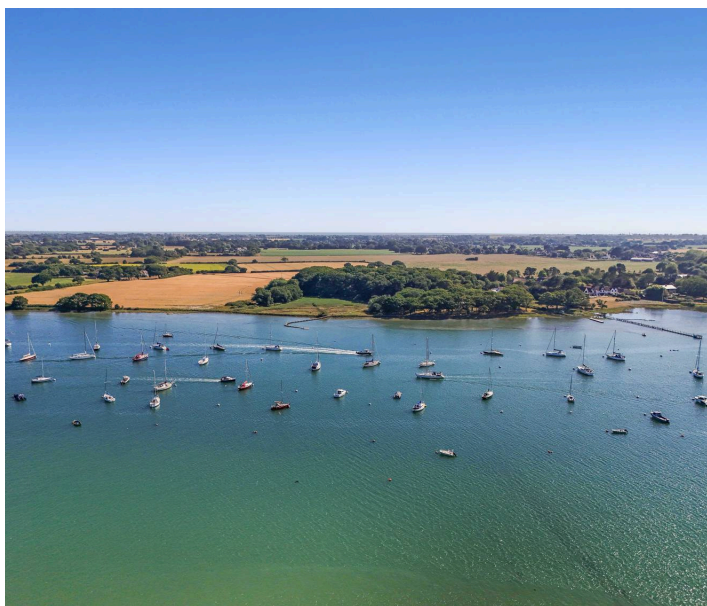
STRIDE & SON

Frenchmans Creek Bosham Hoe

Bosham

Situated on the highly sought-after Bosham Hoe peninsula, a fabulous waterfront residence with private jetty, mooring and panoramic harbour views.

- Prestigious harbourside home occupying a generous plot on Chichester Harbour
- Direct water access with private jetty and mooring included in the sale
- Outstanding harbour views from the principal reception rooms and bedrooms
- Over 3,100 sq ft of flexible accommodation arranged to maximise the setting
- Self-contained annexe with kitchen and living space, ideal for guests or extended family
- Open-plan kitchen and dining area opening onto a harbourside terrace
- Elegant sitting room and adjoining conservatory with superb water views
- Four double bedrooms, including a dual-aspect principal bedroom overlooking the harbour
- Mature gardens, sweeping gravel driveway and terraces leading towards the water
- A rare opportunity to update and personalise a substantial waterfront home







Frenchmans Creek

Situated on the highly sought-after Bosham Hoe peninsula, Frenchman's Creek presents a rare opportunity to acquire a detached waterfront residence with direct access to Chichester Harbour.

With uninterrupted views towards Itchenor Sailing Club and westward along the harbour, together with a private jetty and mooring, the property offers a compelling combination of privacy, outlook, and exceptional access to the water.

The property extends to over 3,100 sq ft and has been well maintained throughout, though it offers scope for a new owner to update and put their own stamp on it. The accommodation has been arranged to make the most of the setting, with light-filled principal rooms and several spaces opening directly to the gardens and terraces.



On the ground floor, an open-plan kitchen and dining area opens onto a harbourside terrace — a natural space for al fresco dining and entertaining with water views. The sitting room enjoys extensive harbour views and connects to an adjoining conservatory, providing further living space with year-round appeal.



Frenchmans Creek

On the first floor, the principal bedroom benefits from dual-aspect harbour views, while three further double bedrooms provide well-proportioned accommodation for family or guests.

A self-contained annexe with its own kitchen and living area adds a further dimension — well-suited to extended family, guests or home working and offering flexibility that few properties at this level can match.

The gardens slope gently to the water's edge, where a private jetty and mooring afford direct access to the harbour — ideal for sailing and boating, with Chichester Harbour's network of channels and creeks immediately on the doorstep. A private mooring is included within the sale, offering secure berth with direct access from the garden.



Frenchmans Creek will appeal to buyers seeking a permanent residence or second home in a prestigious harbourside setting, with outstanding views, private water access and the tranquillity of one of the South Coast's most celebrated and protected waterways.



Occupying a prime position on the edge of Chichester Harbour, the historic village of Bosham offers a unique setting for those seeking a peaceful yet well-connected lifestyle. The village is popular among families, downsizers, and those relocating for an improved quality of life. Local amenities include a traditional pub, waterfront café, sailing club, independent shops, and a network of coastal walks.

The surrounding harbour, designated an Area of Outstanding Natural Beauty, provides a constantly changing landscape of tides, wildlife, and seasonal scenery. Bosham benefits from its own railway station with direct services to London, while the nearby cathedral city of Chichester offers an extensive range of cultural, leisure, and shopping facilities, along with excellent healthcare provision.

The area is also well served by both state and independent schools. Whether as a principal residence or a weekend retreat, Bosham offers an exceptional blend of natural beauty, community, and accessibility—making it one of the most desirable coastal villages in the South of England.

Services: All mains

Local Authority: Chichester District Council

what3words: ///earphones.instance.family

Council Tax band: H

Tenure: Freehold

EPC Energy Efficiency Rating: E





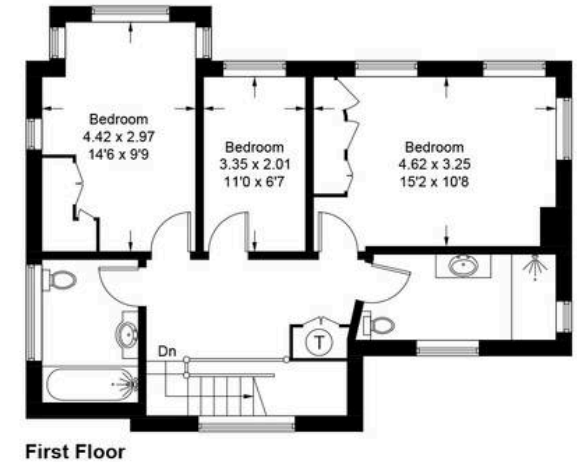
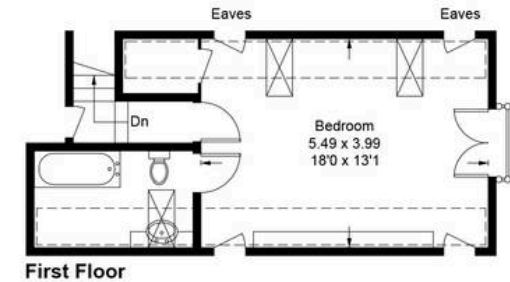


STRIDE & SON

Frenchmans Creek, Bosham Hoe, PO18 8ET

Approximate Gross Internal Area = 296.1 sq m / 3187 sq ft
(Including Garage)

Produced for Stride & Son Estate Agent.



Whilst every attempt has been made to ensure the accuracy of the floor plan contained here, measurements of doors, windows, rooms and any other items are approximate and no responsibility is taken for any error, omission, or misstatement. This plan is for illustrative purposes only and should be used as such by any prospective purchaser.

Created by Emzo Marketing 2025. (ID1218513)



Stride & Son

Stride & Son, 37 South Street - PO19 1EL

01243 782626

contact@strideandson.co.uk

www.strideandson.co.uk



This brochure is for guidance only and does not form part of any contract. While every effort is made to ensure accuracy, measurements, descriptions and details are approximate. Interested parties should carry out their own checks and inspections before making any decisions. Fixtures, fittings and appliances have not been tested and no warranty is given on their condition.