



Oakley Street, SW3

£2,350 Per week

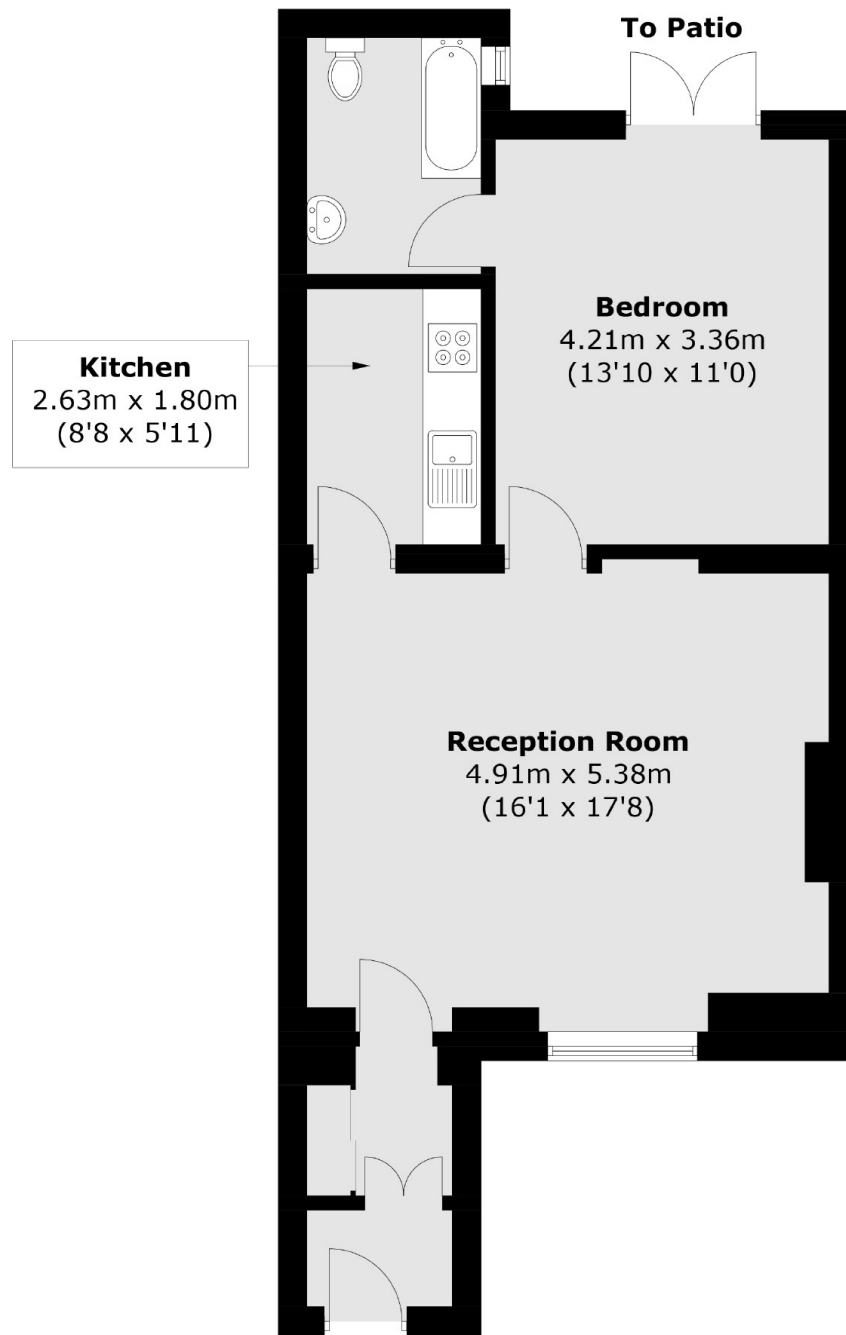
A recently refurbished one bedroom flat to let on Oakley Street with a patio garden. The flat benefits from wood floors throughout, integrated appliances in the kitchen and a modern finish.

Oakley Street is situated between King's Road and Chelsea Embankment close to restaurants, amenities and secluded pubs including The Cross Keys, The Phene and No. 50 Cheyne.

Features

- Patio Garden
- One Bedroom
- One Bathroom
- Private Entrance
- Wood Floors Throughout
- Newly Refurbished

Oakley Street, London, SW3



Lower Ground Floor

Total area (approx.): 56.4 sq. m (607.0 sq. ft)