



## TREBOVIR ROAD, SW5

£3,000,000

South facing  
Private residents garden  
Grand high ceilings  
Four double bedrooms  
Beautifully refurbished  
Energy rating d

@marshandparsons  
marshandparsons.co.uk

MARSH &  
PARSONS

# ABOUT THE PROPERTY

A truly breathtaking fully refurbished four-bedroom three-bathroom apartment positioned on the upper ground floor of this striking Victorian red-brick mansion block benefitting from a residents private garden square.

Located just moments from Earl's Court Road where Earl's Court Station is located ideal for the London Underground (District and Piccadilly Line) and West Brompton Overground Station.







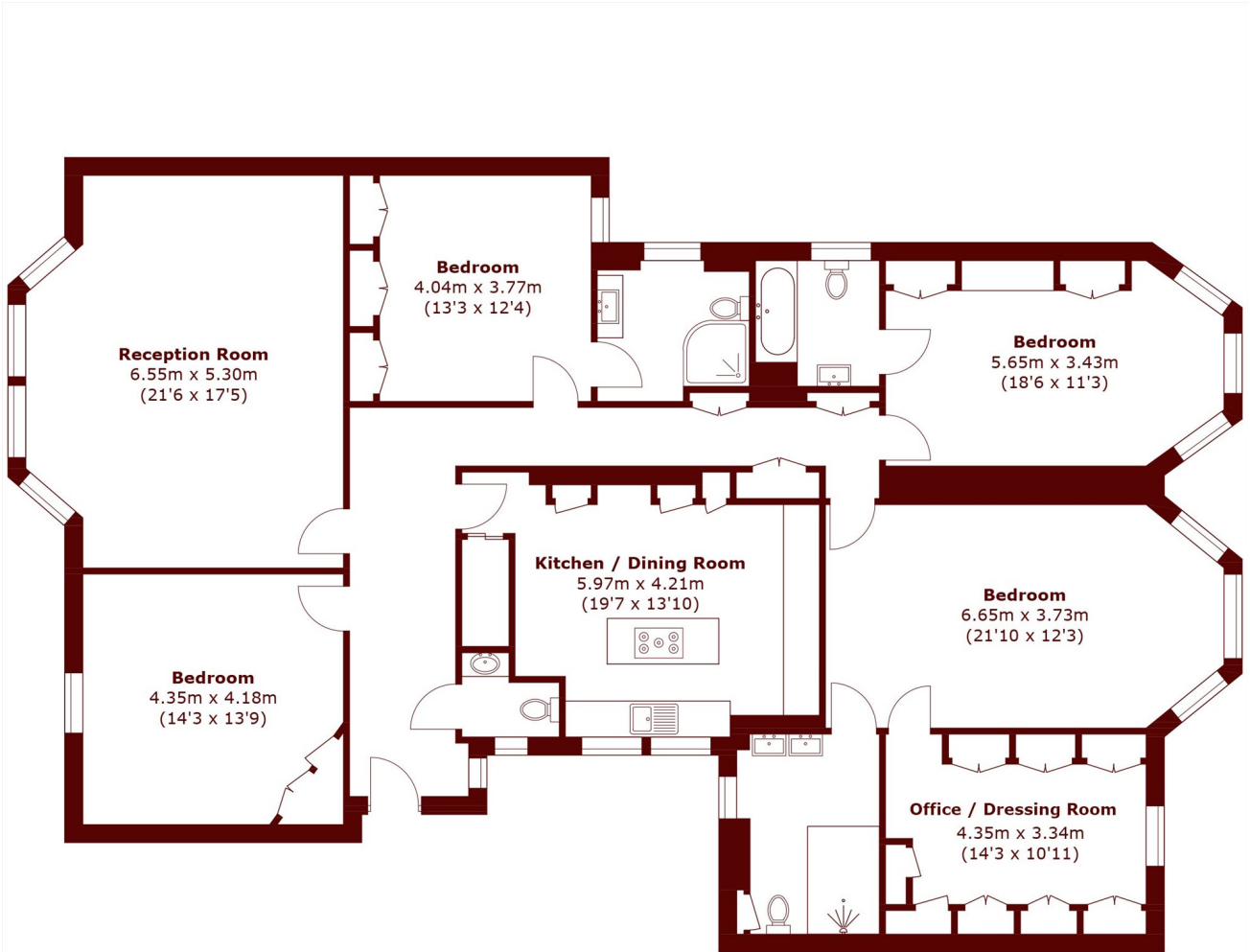
# FURTHER DETAILS

The lateral space of circa 2100SqFt offers four well proportioned double bedrooms, three luxury en suite bathrooms with a separate office/dressing room to the principle suite. The large front-facing reception room and separate fully integrated kitchen with gaggenau appliance just across the hall makes it ideal for entertaining.

Kensington Mansions is a highly acclaimed Victorian mansion block complex that forms part of the Nevern Square Conservation Area, designated in 1985 due to its special historical interest. These purpose-built blocks were constructed in 1890 by the builder William Cooke of Upper Phillimore Place.



# STEP INSIDE TREBOVIR ROAD



**Upper Ground Floor**

Total area (approx.): 194.4 sq. m (2,092.5 sq. ft)

**Earls Court**  
020 8102 0123

Energy Rating: D We aim to make our particulars both accurate and reliable. However, they are not guaranteed; nor do they form part of an offer or contract. If you require clarification on any points then please contact us, especially if you're traveling some distance to view. Please note that appliances and heating systems have not been tested and therefore no warranties can be given as to their good working order

**MARSH &  
PARSONS**