



Guide Price
£312,000

Freehold

2x  1x  1x 

**Newbury Avenue,
Maidstone, Kent ME16**

OVER 60?

Secure this property
for up to **59% less!**

Wards
Helping you move forwards



Main features

- Beautifully presented and spacious home offering a great starting point for first time buyers and investors alike
- Garage en bloc & additional ample parking to the left on Lockwood
- Ideal for outdoor living, gardening, or unwinding in your own space
- Situated in desirable Allington with local schools nearby

Accommodation

GROUND FLOOR

Lounge: 21'2 x 11'9 (6.46m x 3.58m)
Kitchen: 11'3 x 6'4 (3.43m x 1.93m)

FIRST FLOOR

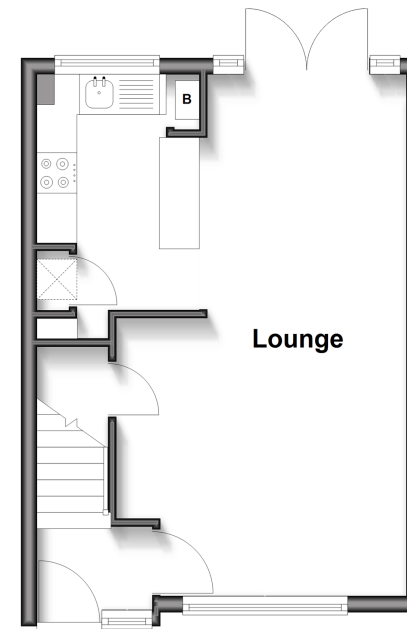
Landing
Bedroom 1: 12'0 x 11'8 (3.66m x 3.56m)
Bedroom 2: 9'6 x 8'4 (2.90m x 2.54m)
Bathroom

OUTSIDE

Utility/Lean-To: 19'1 x 4'1 (5.82m x 1.25m)
Garage En-Bloc
Front and Rear Gardens

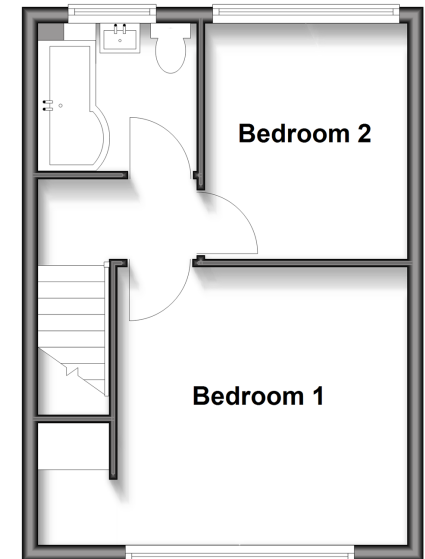
Ground Floor

Approx. 30.1 sq. metres (323.9 sq. feet)



First Floor

Approx. 29.9 sq. metres (322.0 sq. feet)



Call Maidstone - 01622 683737 ■ wardsof Kent.co.uk

■ Legal advice should be taken to verify fixtures/fittings, planning, alterations and/or lease details
■ Through a Homewise Home For Life Plan people aged 60+ can secure this property for up to 59% less, by purchasing a Lifetime Lease

■ Appliances & services are untested, dimensions are approximate and floor plans are not to scale



13158875/20260202/JH/TB