

SNELLERS

ESTATE AGENTS



Lisbon Avenue, TW2

£685,000

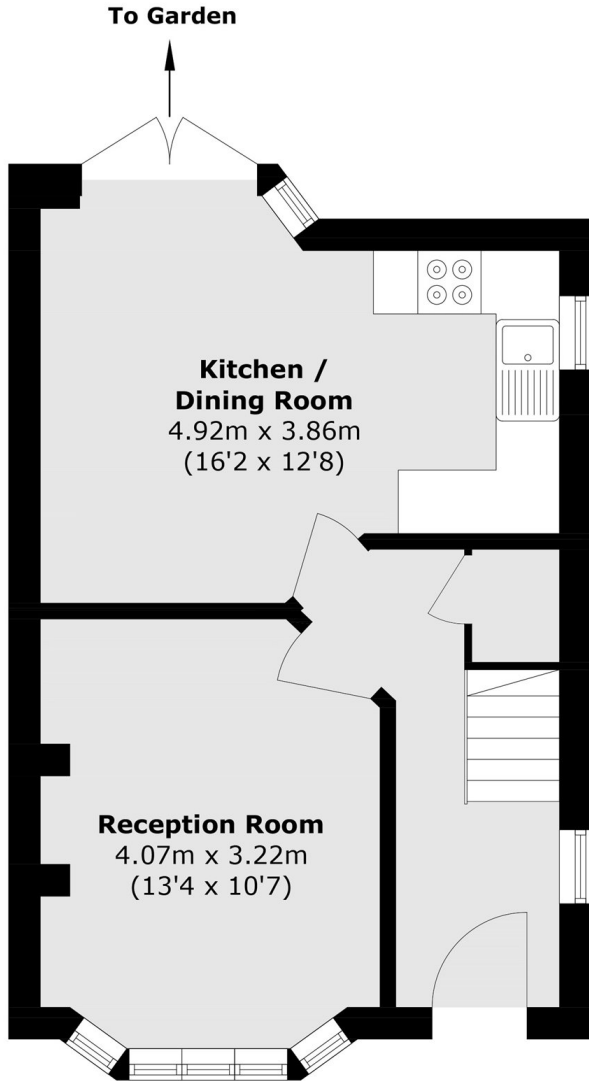
Situated on a sought-after road, this three-bedroom semi-detached home offers a bright living room with a sunny rear garden. Further benefits include side access, potential to rear and loft extend (STPP) and no onward chain.

Lisbon Avenue is a popular residential road within the school catchment area for some of the areas finest schools. Crane Park and Twickenham Green are also close by, offering lovely open green space. Commuters are well catered for, with multiple stations close by providing direct links into London Waterloo.

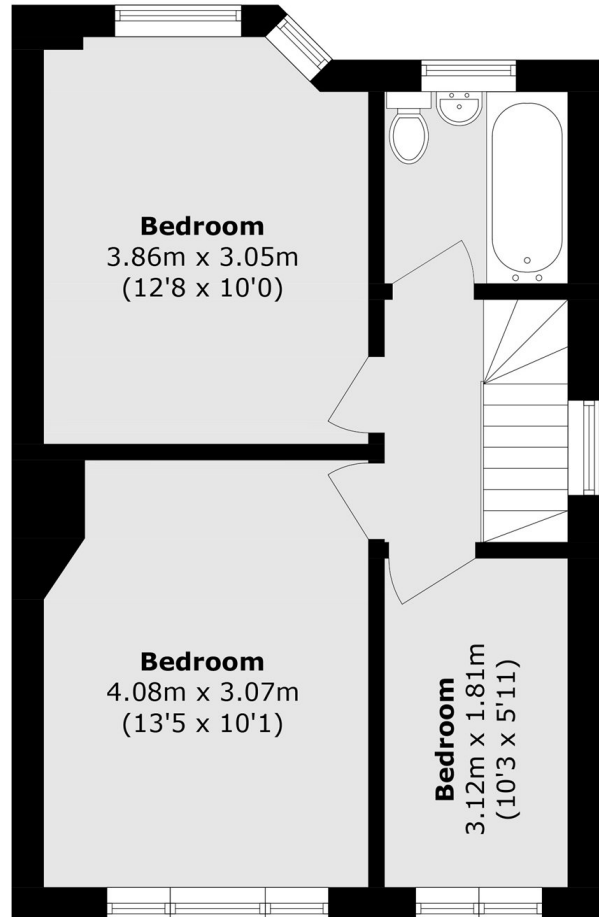
- Popular Location • Three Bedrooms • Potential to Extend (STPP) •
- Semi Detached • South East Facing Garden • Good School Catchments •

SNELLERS

ESTATE AGENTS



Ground Floor



First Floor

Total area (approx.): 75.9 sq. m (816.9 sq. ft)

Snellers Twickenham Sales
64-66 Heath Road
Twickenham
TW1 4BX
020 8892 5555
twickenhamsales@snellers.co.uk

Energy Rating: D We aim to make our particulars both accurate and reliable. However they are not guaranteed; nor do they form part of an offer or contract. If you require clarification on any points then please contact us, especially if you're traveling some distance to view. Please note that appliances and heating systems have not been tested and therefore no warranties can be given as to their good working order