



2 Bedrooms | 1 Bathrooms | 1 Reception Rooms

Partridge Knoll | Purley | CR8 1BS

£1,600

LOFT

**Partridge Knoll |
Purley | CR8 1BS
£1,600**

This beautifully presented apartment offers stylish and comfortable living throughout and is located on the first floor. The property features an enviable open-plan kitchen and dining area complete with sleek hard flooring, a central island, and modern fitted appliances, creating the perfect space for cooking and entertaining. A separate lounge is generously sized and flooded with natural light, providing a welcoming place to relax. The larger-than-average bathroom benefits from a spacious storage cupboard, adding practicality to its modern design. Ideally located just a short walk from Purley train station and the town centre, the apartment also enjoys a quiet setting with convenient on-street parking nearby.

- First floor apartment, presented beautifully, available in April
- Modern kitchen with fitted appliances
- Larger than usual bathroom with great-size storage cupboard
- Quiet location with on-street parking
- Enviably open-plan kitchen/diner with hard flooring and island
- Separate lounge, flooded with light
- Located just a short walk from Purley train station and town centre

First Floor

Hallway

Kitchen/Dining Room
16'3 x 12'2 (4.95m x 3.71m)

Lounge
16'3 x 12'2 (4.95m x 3.71m)

Bedroom 1
12'2 x 8'3 (3.71m x 2.51m)

Bedroom 2
12'2 x 7'7 (3.71m x 2.31m)

Bathroom

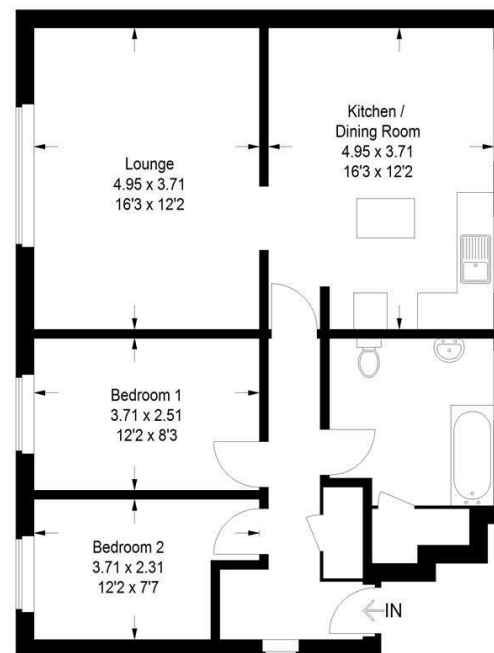
Outside

Communal Gardens



Partridge knoll, CR8

Approximate Gross Internal Area
69.9 sq m / 752 sq ft



This plan is for layout guidance only. Not drawn to scale unless stated. Windows and door openings are approximate. Whilst every care is taken in the preparation of this plan, please check all dimensions, shapes and compass bearings before making any decisions reliant upon them. (ID1120339)

EPC Rating: C

23a High Street
Purley
Surrey
CR8 2AF
0208 660 8070

hello@loft-estates.co.uk
<https://www.loft-estates.co.uk>
Instagram: loft.estateagents
Facebook: LOFT Estate Agents