



21 Creedy Drive

DenisonS

# 21 Creedy Drive

Christchurch, BH23 1NX

£695,000

This riverside townhouse in Christchurch offers the perfect blend of location and comfort, ideal for families or as a lock-up-and-leave. Just steps from the River Stour and Christchurch Quay, it features three double bedrooms, each with its own ensuite, and accommodation spread across three floors. The property includes a welcoming hallway, a downstairs shower room, and a breakfast kitchen with a large window overlooking the garden. The kitchen provides access to an integral garage and a downstairs bedroom, ideal as a reception room. On the first floor, there's a living room with a small balcony and a double bedroom with an ensuite. The second floor offers two large double bedrooms, each with an ensuite bathroom.

Outside, the property features a block-paved driveway for two cars, leading to the garage, and a low-maintenance rear garden with a wrap-around decking area and gravel. A back pedestrian gate provides additional access.

The town itself is nestled between Bournemouth and the New Forest, offering a vibrant community, independent shops, and attractions such as the priory, castle ruins, nature reserves, beaches, and Mudeford Quay. With ferry access to Mudeford Spit and Hengistbury Head. Viewings are highly recommended.



**Kitchen/Family Room 17' 9" x 17' 6" (5.41m x 5.33m)**

**Dining/Bedroom 4 13' 0" x 10' 0" (3.96m x 3.05m)**

**Downstairs Shower Room**

**Hallway**

**Living Room 17' 9" x 12' 0" (5.41m x 3.65m)**

**Bedroom 3 15' 6" x 11' 6" (4.72m x 3.50m)**

**En-suite Bathroom**

**Bedroom 2 15' 6" x 9' 3" (4.72m x 2.82m)**

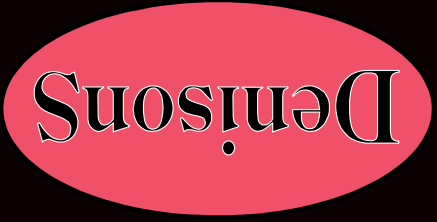
**En-suite Bathroom**

**Bedroom 1 15' 6" x 11' 6" (4.72m x 3.50m)**

**En-suite Bathroom**

**Garage**





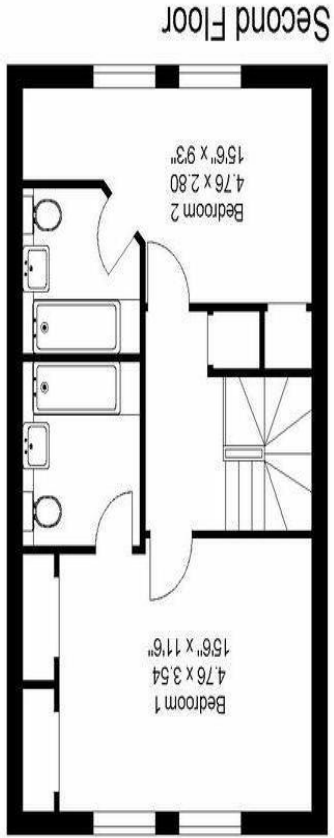
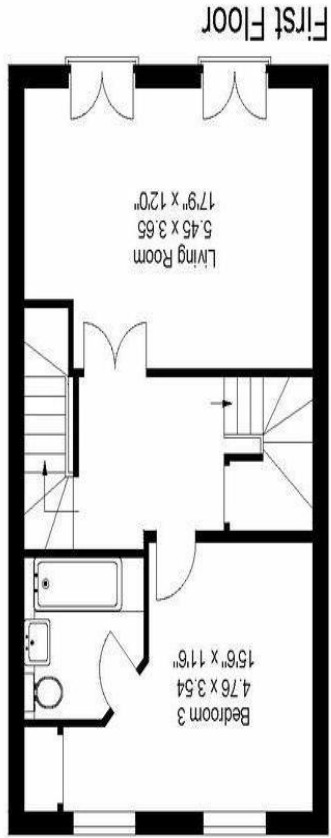
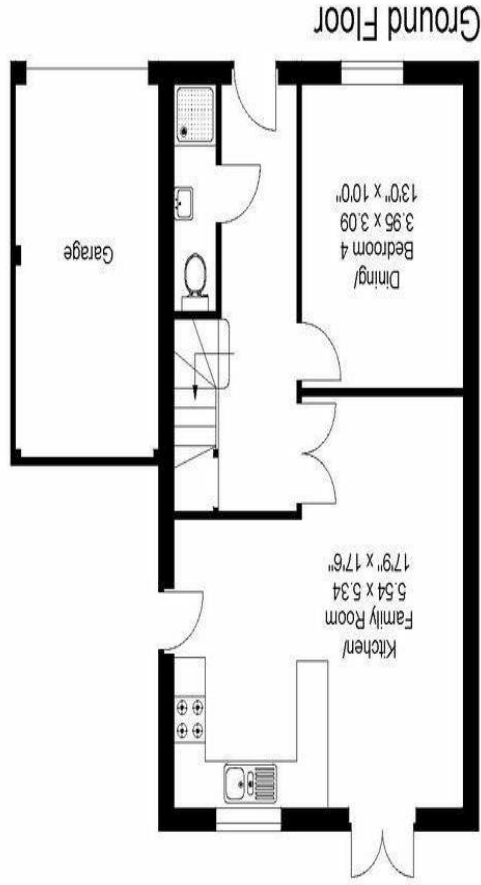
Denisons for themselves and for the Vendors or lessors of this property, whose Agents they are, give notice that these particulars are produced in good faith, are set out as a general guide only and do not constitute any part of a Contract. No person in the employment of Denisons has any authority to make or give any representation or warranty whatever in relation to this property.

[www.denisons.com](http://www.denisons.com)

Mayfair  
 Cashel House, London, W1U 3JT  
**0870 112 7099**  
 mayfair@denisons.com

Christchurch  
 12 Castle Street, Christchurch BH23 1DT  
**01202 484748**  
 christchurch@denisons.com

Approximate  
 Gross Internal Floor Area  
 Total: 157sq. m. or 1689sq. ft.  
 (Excluding Garage)



Score	Energy rating	Current	Potential
92+	A	84 B	
81-91	B		
69-80	C		72 C
55-68	D		
39-54	E		
21-38	F		
1-20	G		



Denisons