



Herbrand Street, WC1N

£699,950

A well presented two double bedroom home with access to parking and outside storage. There is a refitted eat-in kitchen, wood flooring, hardwood double glazed windows and no onward chain.

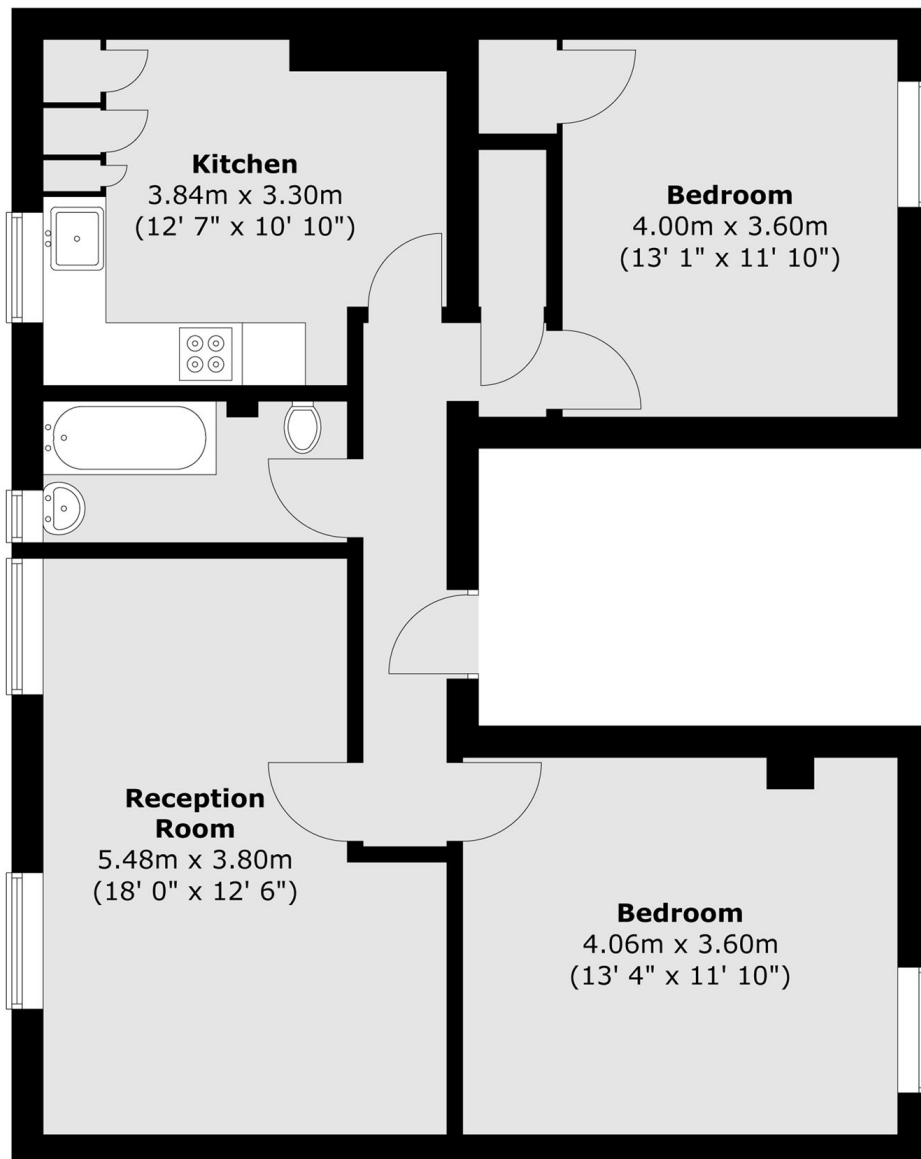
Positioned in central Bloomsbury the property has great access to an array of bars, restaurants and high street shopping. Russell Square underground is nearby along with peaceful parks and squares.

Features

- Two Double Bedrooms
- Separate Kitchen
- Parking Available
- Excellent Location
- No Onward Chain
- Double Glazed Sash Windows

Herbrand Street, London, WC1N

Third Floor



Total area (approx.) : 71.4 sq. m (768 sq. ft)