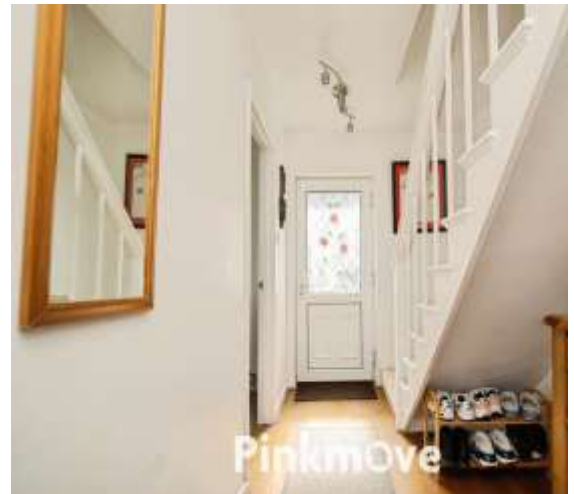




Anthony Drive, Newport

Guide Price £380,000 - £390,000

- Guide Price £380,000 - £390,000
- Detached dormer bungalow
- Four bedrooms
- Two bathrooms
- Spacious living room and separate dining room
- Driveway and garage
- Flexible accommodation over two floors
- Private enclosed rear garden with decking
- EPC Rating: D



 4  2  2

Pinkmove

01633 746088
team@pinkmove.co.uk



About the property

This well-presented and versatile four-bedroom detached dormer bungalow is situated in a desirable residential area and offers generous living accommodation across two floors, making it ideal for a range of buyers.

To the front, the property benefits from a low-maintenance garden which enhances its kerb appeal, along with access to the garage from the front.

A welcoming entrance hall provides access to the main living spaces. The property offers a spacious living room, perfect for relaxing, alongside a separate dining room ideal for entertaining. The ground floor further benefits from a double bedroom, a modern family bathroom, an additional versatile bedroom, ideal for home working or multi-generational living.

Upstairs, the property hosts two further bedrooms, including a generous main bedroom with built-in storage and a further well-proportioned bedroom. A convenient shower room completes the first-floor accommodation.

To the rear is a private enclosed garden with a lawn and raised decking seating area, perfect for outdoor dining and entertaining, with fencing providing privacy.

The rear of the property also benefits from off-road parking and access to the garage.





Accommodation

Living Room

Dining Room

Bedroom 4

Kitchen

Bathroom

Bedroom 1

Bedroom 2

Bedroom 3

Shower Room

01633 746088

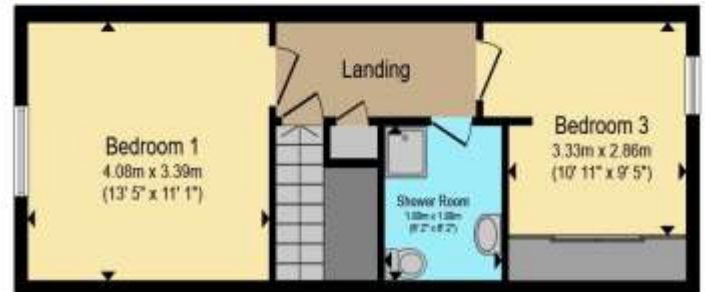
team@pinkmove.co.uk

Pinkmove

Floorplan



Ground Floor



First Floor

Total floor area 111.6 sq.m. (1,201 sq.ft.) approx

This floor plan is for illustrative purposes only. It is not drawn to scale. Any measurements, floor areas (including any total floor area), openings and orientation are approximate. No details are guaranteed, they cannot be relied upon for any purpose and they do not form part of any agreement. No liability is taken for any error, omission or misstatement. A party must rely upon its own inspection(s). Powered by www.focalagent.com

Pinkmove

Important Information

Note while we endeavour to make our sales details accurate and reliable, if there is any point which is of particular interest to you, please contact the office and we will be pleased to confirm the position for you. We have not personally tested any apparatus, equipment, fixtures, fittings or services and cannot verify they are in working order or fit for their purposes. Nothing in these particulars is intended to indicate that carpets or curtains, furnishings or fittings, electrical goods (whether wired or not). Gas fires or light fittings or any other fixtures not expressly included form part of the property offered for sale. This computer generated Floorplan, if applicable, is intended as a general guide to the layout and design of the property. It is not to scale and should not be relied upon for dimensions. Tenure: We cannot confirm the tenure of the property as we have not had access to the legal documents. The buyer is advised to obtain verification from their solicitor or surveyor.

Peter Alan Limited is registered in England and Wales under company number 2073153, Registered Office is Cumbria House, 16-20 Hockliffe Street, Leighton Buzzard, Bedfordshire, LU7 1GN. VAT Registration Number is 500 2481 05. For activities relating to regulated mortgages and non-investment insurance contracts, Peter Alan Limited is an appointed representative of Connells Limited which is authorised and regulated by the Financial Conduct Authority. Connells Limited's Financial Services Register number is 302221. Most buy-to-let

