



Guide Price
£525,000

Freehold

3x  2x  1x 

**Newbury Avenue,
Maidstone, Kent ME16**

OVER 60?

Secure this property
for up to **59% less!**

Wards
Helping you move forwards



Main features

- Immaculately presented with modern decor throughout
- Large drive with an abundance of parking
- Walking distance to local schools and shops
- Incredibly well extended allowing space to entertain family and friends
- A beautiful location with fantastic motorway links nearby

Accommodation

GROUND FLOOR

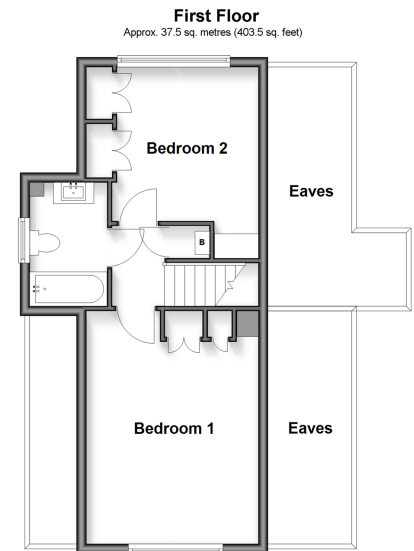
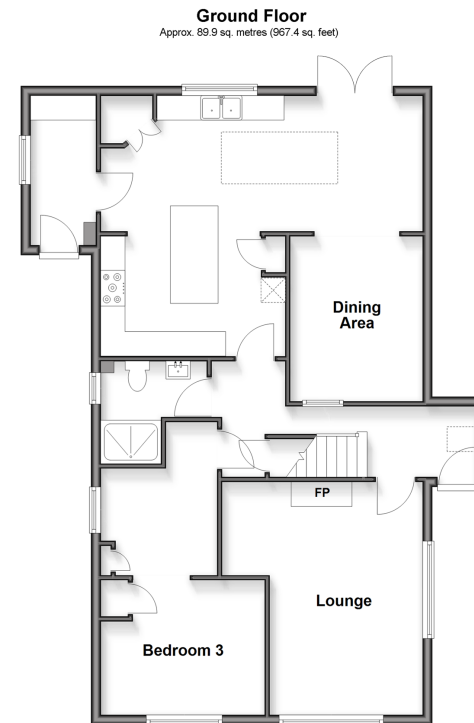
Hallway
 Lounge: 15'6 x 13'5 (4.73m x 4.09m)
 Bedroom 3: 11'0 x 9'0 (3.36m x 2.75m) plus 10'3 x 8'1 (3.13m x 2.47m)
 Shower Room
 Kitchen Area: 12'6 x 8'0 (3.81m x 2.44m)
 Family Area: 21'5 x 9'0 (6.53m x 2.75m)
 Dining Area: 11'2 x 8'9 (3.41m x 2.67m)
 Utility Room: 10'5 x 4'5 (3.18m x 1.35m)

FIRST FLOOR

Landing
 Bedroom 1: 15'5 x 11'7 (4.70m x 3.53m)
 Bedroom 2: 11'0 x 10'3 (3.36m x 3.13m)
 Bathroom

OUTSIDE

Rear Garden
 Outside Bar: 8'3 x 6'9 (2.52m x 2.06m)
 Front Garden
 Off Road Parking



Call Maidstone - 01622 683737 ■ wardsofkent.co.uk

■ Legal advice should be taken to verify fixtures/fittings, planning, alterations and/or lease details
 ■ Through a Homewise Home For Life Plan people aged 60+ can secure this property for up to 50% less, by purchasing a Lifetime Lease.

■ Appliances & services are untested, dimensions are approximate and floor plans are not to scale



13159096/20251004/TB/TB