



**Price**  
**£375,000**

**Freehold**

3x  2x  1x 

**Wenham Drive,  
Maidstone, Kent, ME17**

**OVER 60?**

Secure this property  
for up to **59% less!**

*Wards*  
Helping you move forwards



## Main features

- Overlooking local park and primary school within walking distance
- Great entertaining space with large kitchen/diner
- Large tandem driveway with garage providing extra parking or storage
- En-suite shower room to Bedroom 1
- Easy access to Maidstone and M20 motorway links

## Accommodation

### GROUND FLOOR

Entrance Hall

Lounge: 13'9 x 12'1 (4.19m x 3.69m)

Kitchen/Diner: 15'5 x 9'4 (4.70m x 2.85m)

Cloakroom: 6'2 x 3'4 (1.88m x 1.02m)

### FIRST FLOOR

Landing

Bedroom 1: 9'8 x 9'1 (2.95m x 2.77m)

En-suite Shower Room: 5'7 x 5'6 (1.70m x 1.68m)

Bedroom 2: 10'10 x 8'6 (3.30m x 2.59m)

Bedroom 3: 11'7 x 6'5 (3.53m x 1.96m)

Bathroom: 6'7 x 5'7 (2.01m x 1.70m)

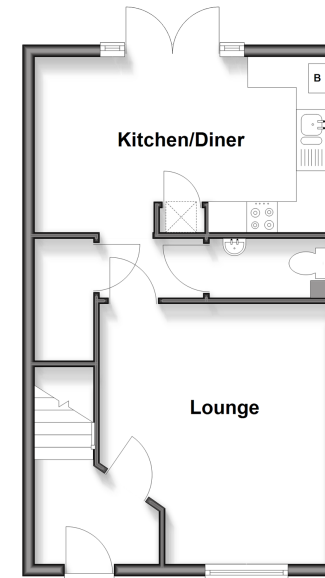
### OUTSIDE

Garage

Front and Rear Gardens

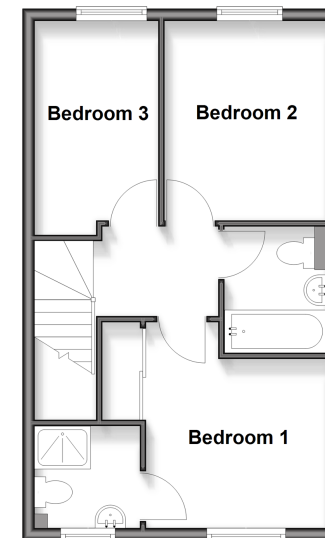
### Ground Floor

Approx. 39.7 sq. metres (426.9 sq. feet)



### First Floor

Approx. 39.7 sq. metres (426.9 sq. feet)



**Call Bearsted - 01622 730955 ■ [wardsofkent.co.uk](http://wardsofkent.co.uk)**

- Legal advice should be taken to verify fixtures/fittings, planning, alterations and/or lease details
- Appliances & services are untested, dimensions are approximate and floor plans are not to scale
- Through a Homewise Home For Life Plan people aged 60+ can secure this property for up to 50% less, by purchasing a Lifetime Lease.



12722111/20250816/DB/DF