





### Property Description

A charming end-of-terrace property located in the heart of Tipton, this home is offered with no upward chain and has been meticulously maintained. It features spacious and adaptable living areas, making it an ideal choice for families and first-time buyers alike. Additionally, its prime location provides easy access to various amenities, schools, and transport links, including Dudley Port train station and the upcoming tram line.

### Entrance Hall

Double glazed door to the side, double glazed window to the side, stairs to first floor accommodation.

### Lounge

13' 8" x 12' 2" ( 4.17m x 3.71m )

Double glazed window to the front, central heating radiator.

### Dining Room

12' x 11' 2" ( 3.66m x 3.40m )

Double glazed window to the rear, built-in understairs store, central heating radiator.

### Kitchen

14' 4" x 7' 4" ( 4.37m x 2.24m )

A fitted kitchen to include wall and base units with work surfaces over, one and a half bowl sink & drainer unit, gas cooker point, plumbing for washing machine, space for domestic appliances, tiling, central heating boiler, double glazed window to the side, double glazed door to the rear leading to garden.

### Downstairs Bathroom

Comprising bath with main shower over, wash hand basin, low level w.c., tiling.



## First Floor

### Landing

Loft access.

### Bedroom One

12' 4" x 13' 7" ( 3.76m x 4.14m )

Double glazed window to the front, central heating radiator.

### Bedroom Two

14' 2" x 8' 9" ( 4.32m x 2.67m )

Double glazed window to the rear, central heating radiator.

### Bedroom Three

11' 2" x 7' 5" ( 3.40m x 2.26m )

Double glazed window to the rear, central heating radiator.

### Shower Room

Shower cubicle with shower , wash hand basin, low level w.c., double glazed window to the side.

### Outside

To the rear of the property paved court yard.

### Brick Built Store

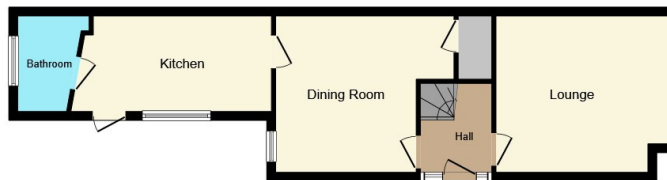
14' x 10' 4" ( 4.27m x 3.15m )

Door.





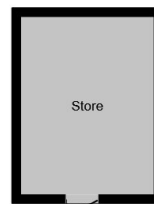




**Ground Floor**



**First Floor**



**Outbuilding**

This floor plan is for illustrative purposes only. It is not drawn to scale. Any measurements, floor areas (including any total floor area), openings and orientation are approximate. No details are guaranteed, they cannot be relied upon for any purpose and they do not form part of any agreement. No liability is taken for any error, omission or misstatement. A party must rely upon its own inspection(s). Powered by [www.focalagent.com](http://www.focalagent.com)

To view this property please contact Connells on

**T 01384 214 770**  
**E [dudley@connells.co.uk](mailto:dudley@connells.co.uk)**

4 & 5 Stone Street  
 DUDLEY DY1 1NS

EPC Rating: D    Council Tax  
 Band: A

Tenure: Freehold

**view this property online [connells.co.uk/Property/DUD314145](http://connells.co.uk/Property/DUD314145)**



1. MONEY LAUNDERING REGULATIONS Intending purchasers will be asked to produce identification documentation at a later stage and we would ask for your co-operation in order that there will be no delay in agreeing the sale. 2. These particulars do not constitute part or all of an offer or contract. 3. The measurements indicated are supplied for guidance only and as such must be considered incorrect. Potential buyers are advised to recheck measurements before committing to any expense. 4. We have not tested any apparatus, equipment, fixtures, fittings or services and it is in the buyers interest to check the working condition of any appliances.

Connells Residential is registered in England and Wales under company number 1489613, Registered Office is Cumbria House, 16-20 Hockliffe Street, Leighton Buzzard, Bedfordshire, LU7 1GN. VAT Registration Number is 500 2481 05.

**See all our properties at [www.connells.co.uk](http://www.connells.co.uk) | [www.rightmove.co.uk](http://www.rightmove.co.uk) | [www.zoopla.co.uk](http://www.zoopla.co.uk)**

Property Ref: DUD314145 - 0002