



£265,000

Ashtree Gardens

Millhouse Green, S36 9AD

PROPERTY SUMMARY

A superb three bedroom end terrace home offering spacious and versatile accommodation over three impressive levels, perfectly suited to modern family living. Tucked away in this popular development the property enjoys a wonderful balance of village charm, countryside surroundings and everyday practicality.

3



2



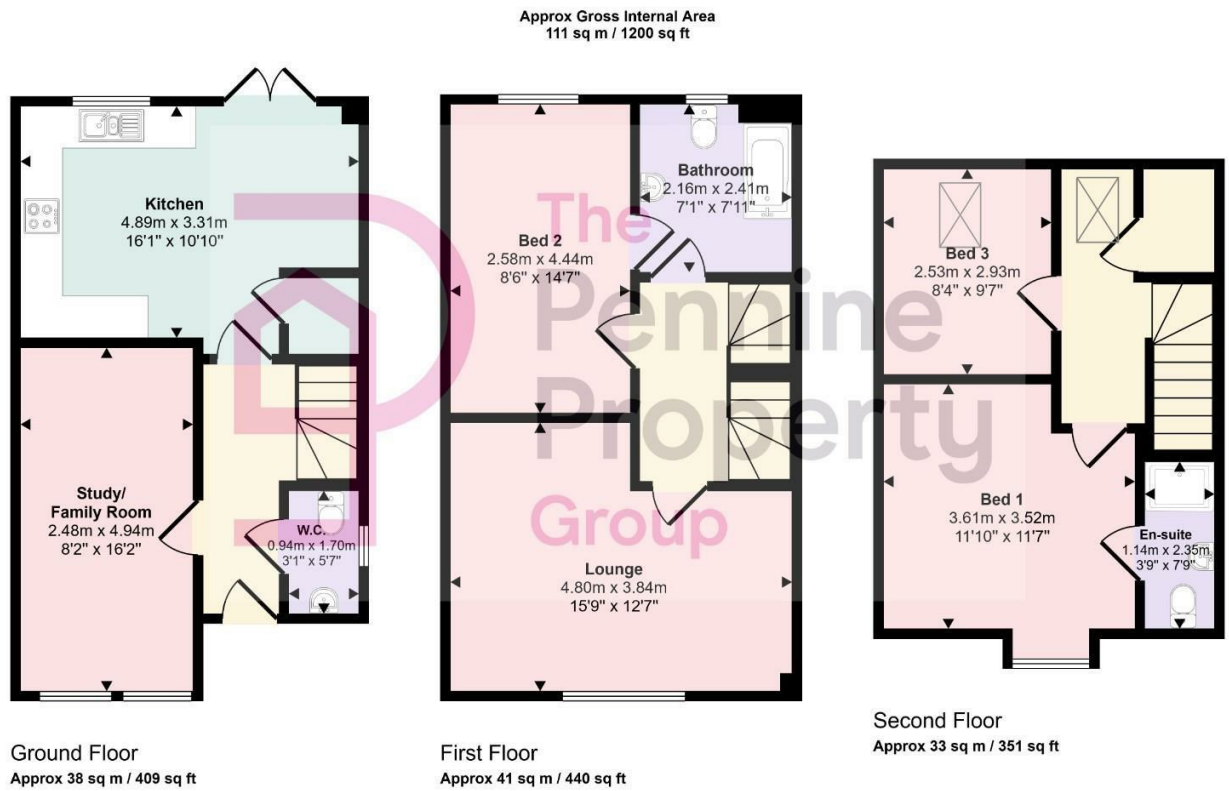
2











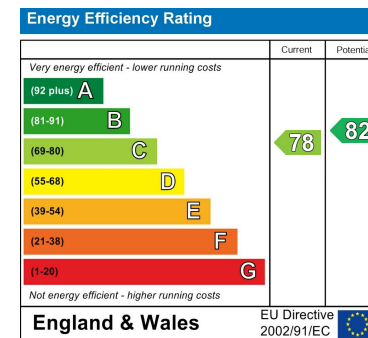
This floorplan is only for illustrative purposes and is not to scale. Measurements of rooms, doors, windows, and any items are approximate and no responsibility is taken for any error, omission or mis-statement. Icons of items such as bathroom suites are representations only and may not look like the real items. Made with Made Snappy 360.

LOCAL AUTHORITY
BMBC

TENURE
Freehold

COUNCIL TAX BAND
C

VIEWINGS
By prior appointment only



Agents Note: Whilst every care has been taken to prepare these particulars, they are for guidance purposes only. All measurements are approximate and are for general guidance purposes only and whilst every care has been taken to ensure their accuracy, they should not be relied upon and potential buyers/tenants are advised to recheck the measurements

OFFICE ADDRESS

12 St Marys Street
Penistone
Sheffield
South Yorkshire
S36 6DT

OFFICE DETAILS

01226 766755
info@pennineproperty.co.uk