



St Pancras Chambers

King's Cross, NW1

£4,750 per month
(£1,096.15 per week)

SHORT LET - Set within the exquisite Grade I listed St Pancras Chambers is this larger than average one Bedroom apartment offering approx. 690 sq ft of lateral living.

CHESTERTONS



St Pancras Chambers

King's Cross, NW1

- Truly unique 1 Bedroom apartment
- Open-Plan Living & Bathroom
- Set within the St Pancras Chambers
- Transport links and amenities on your doorstep
- INCLUSIVE OF ALL BILLS



SHORT LET - Set within the exquisite Grade I listed St Pancras Chambers is this larger than average one bedroom apartment offering approx. 690sqft of lateral living.

Located on the third floor (with lift), the Property offers a very "grand" and "characterful" appearance throughout benefitting from some of the original features as well as the benefit of 24hr concierge.

The apartment is moments from St. Pancras International and Kings Cross station and nearby local amenities. Accommodation comprises of; open-plan Kitchen with breakfast bar, spacious Double Bedroom

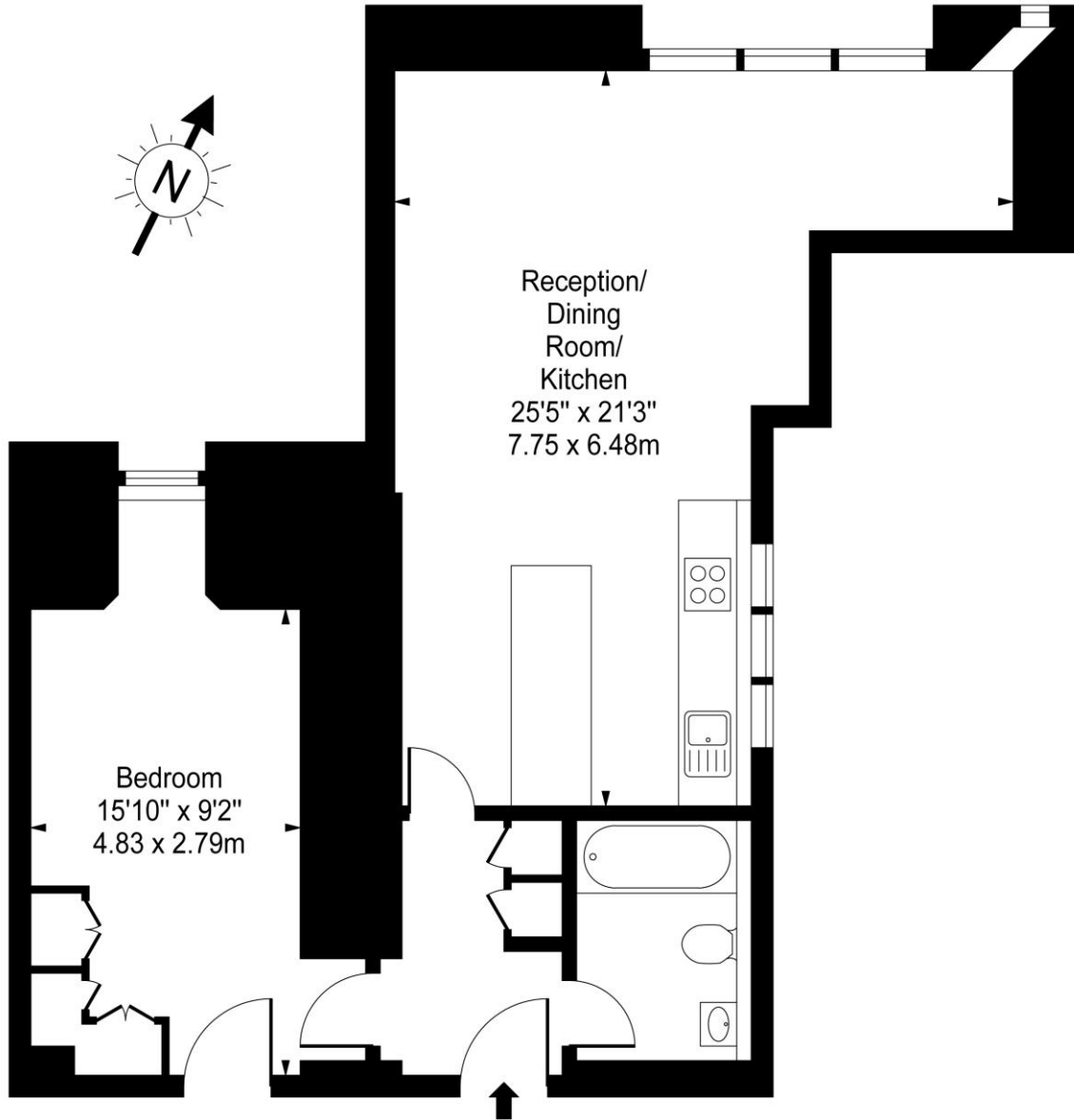
Minimum Term: 1 months
Deposit Required: £2,192.31
Local Authority: Camden
Council Tax Band: F
EPC Rating: D
Furnished, Part Furnished, Unfurnished

Chestertons Camden & Primrose Hill Lettings

99-101 Parkway
London
NW1 7PP
camdentownlettingsusers@chestertons.co.uk
02072673574
chestertons.co.uk

Additional tenant charges apply (fees apply to non-AST tenancies only)
Tenancy Agreement Fee: £300
References per Tenant/Guarantor: £60
Inventory check (approx. £100 – £250 inc. VAT)
chestertons.co.uk/property-to-rent/applicable-fees

St. Pancras Chambers, Euston Road



Third Floor

Gross Internal Area - 690 Sq Ft - 64.10 Sq M

Approx Gross Internal Area 690 Sq Ft - 64.10 Sq M

For Illustration Purposes Only - Not To Scale

www.goldlens.co.uk

Ref. No. 008350J

