



ALASTAIR SAVILLE  
ESTATE AGENTS

## Thorn Tree Drive, Thornton

Offers Over £310,000

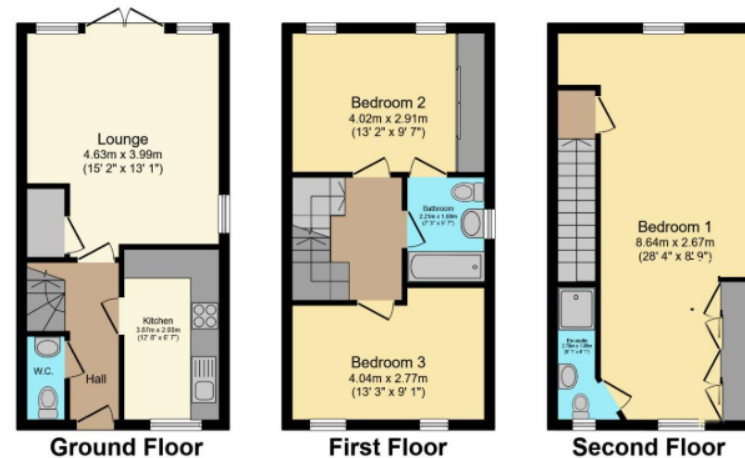
3 2 1

- Three Bedroom Semi Detached Home
- Two Good Sized Double Bedrooms On First Floor
- Spacious Lounge Diner With Media Wall
- Off Road Parking On Driveway
- Freehold
- Top Floor Primary Bedroom With Ensuite
- Modern Kitchen With Appliances
- Landscaped Rear Garden
- Immaculate Throughout
- EPC Rating - B, Council Tax Band - C

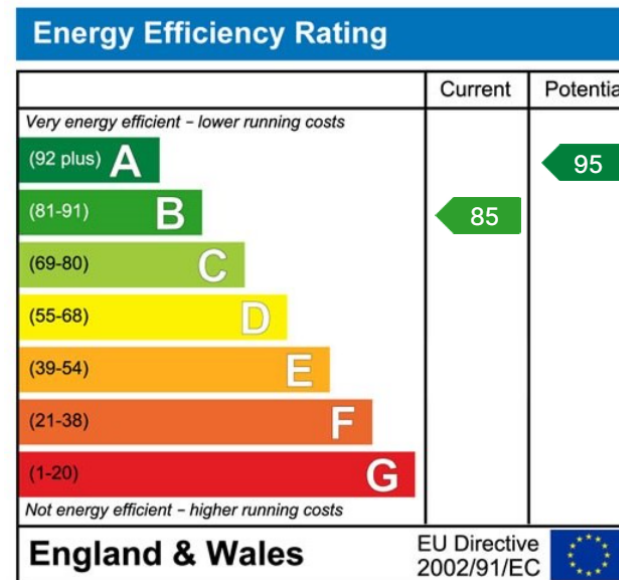


A BEAUTIFULLY PRESENTED THREE STOREY, THREE BEDROOM SEMI DETACHED HOME ON THORN TREE DRIVE, THORNTON, OFFERING A STUNNING MODERN KITCHEN, A SPACIOUS LOUNGE/DINER WITH MEDIA WALL, TWO BATHROOMS AND A LANDSCAPED, LOW-MAINTENANCE GARDEN, PERFECT FOR MODERN LIVING.





Total floor area 98.1 m<sup>2</sup> (1,055 sq.ft.) approx



**Alastair Saville Estate Agents**  
 25 Central Square • Maghull • Liverpool • L31 0AE  
 138 Ormskirk Road • Old Roan • Liverpool • L10 3JG  
 Tel: 0151 520 0001 • Website: [www.alastairsaville.com](http://www.alastairsaville.com)  
 Email: [sales@alastairsaville.com](mailto:sales@alastairsaville.com) • [lettings@alastairsaville.com](mailto:lettings@alastairsaville.com)

