



Chalton Drive

London, N2

£14,000 per month
(£3,230.77 per week)

Stunning six bedroom, five bathroom (four en-suite) magnificent double fronted detached family home. The property is arranged over three floors and has been refurbished throughout, to an extremely high standard, offering up to date technology including lutron lighting and a remote controlled fireplace. Further benefits include an extremely large reception room; two further reception rooms; fully fitted Hacker kitchen with Miele appliances with family room/tv room; guest cloakroom; utility room; mature garden with large patio and off street parking.

CHESTERTONS



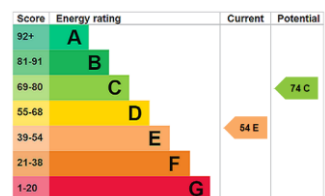
Chalton Drive

London, N2

- 6 Bedroom
- Double Fronted
- Large Rear Garden
- Driveway
- Beautifully Refurbished



Minimum Term: 12 months
Deposit Required: £19,384.62
Local Authority: London Borough of Barnet
Council Tax Band: H
EPC Rating: E
Unfurnished

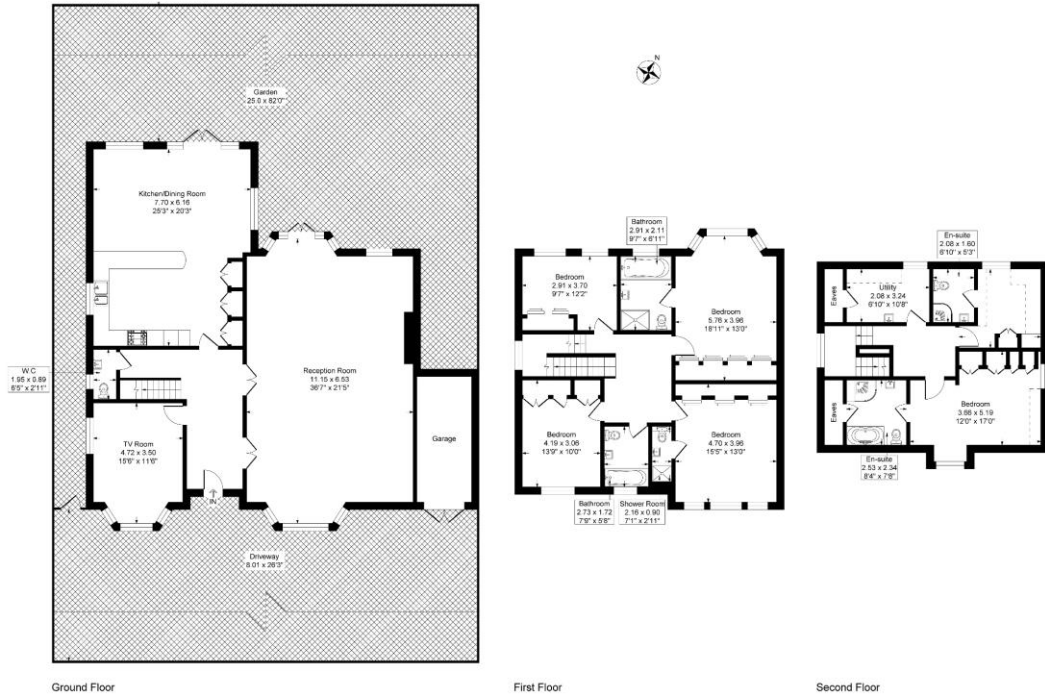


Chestertons Hampstead Lettings

55-56 Hampstead High Street
Hampstead
London
NW3 1QH
hampsteadlettingsusers@chestertons.co.uk
02077941125
chestertons.co.uk

Additional tenant charges apply (fees apply to non-AST tenancies only)
Tenancy Agreement Fee: £300
References per Tenant/Guarantor: £60
Inventory check (approx. £100 – £250 inc. VAT)
[chestertons.co.uk/property-to-rent/applicable-fees](https://www.chestertons.co.uk/property-to-rent/applicable-fees)

Charlton Drive, London, N2
 Approximate Gross Internal Floor Area = 299.8 sq.m / 3227 sq.ft



Ground Floor

First Floor

Second Floor

Illustration for identification purposes only, measurements are approximate, not to scale.

