



Price

£250,000

Leasehold

2x  1x  1x 

Sovereign Court, Barton
Road, Sutton At Hone,
Kent, DA4

OVER 60?

Secure this property
for up to **59% less!**

Wards
Helping you move forwards



Main features

- Lovely ground floor maisonette with allocated parking
- Well presented throughout
- Communal garden
- Close to train station
- Panoramic views

Accommodation

GROUND FLOOR

Hallway

Lounge/Diner: 16'7 x 10'9 (5.06m x 3.28m)

Kitchen: 9'3 x 7'5 (2.82m x 2.26m)

Bedroom 1: 13'5 x 10'1 (4.09m x 3.08m)

Bedroom 2: 9'0 x 7'5 (2.75m x 2.26m)

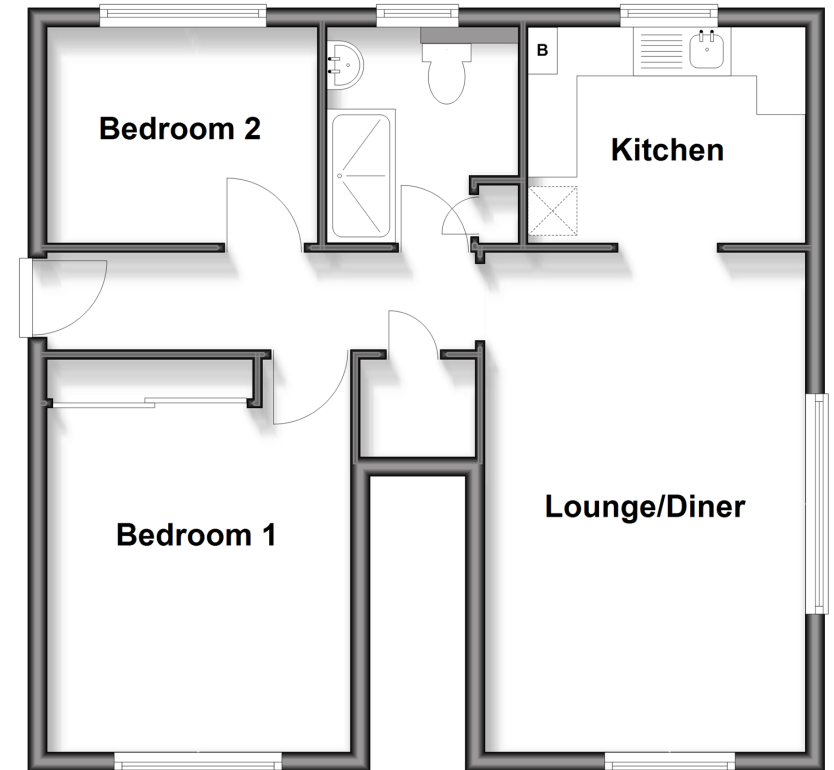
Bathroom: 7'5 x 6'6 (2.26m x 1.98m)

OUTSIDE

Allocated Parking Space
Communal Garden

Ground Floor

Approx. 53.6 sq. metres (576.7 sq. feet)



Call Dartford - 01322 288211 ■ wardsof Kent.co.uk

- Legal advice should be taken to verify fixtures/fittings, planning, alterations and/or lease details
- Appliances & services are untested, dimensions are approximate and floor plans are not to scale
- Through a Homewise Home For Life Plan people aged 60+ can secure this property for up to 59% less, by purchasing a Lifetime Lease



10546278/20260119/MP/CA