

FLETCHERS

ESTATE AGENTS



Fraser Street, W4

£695,000

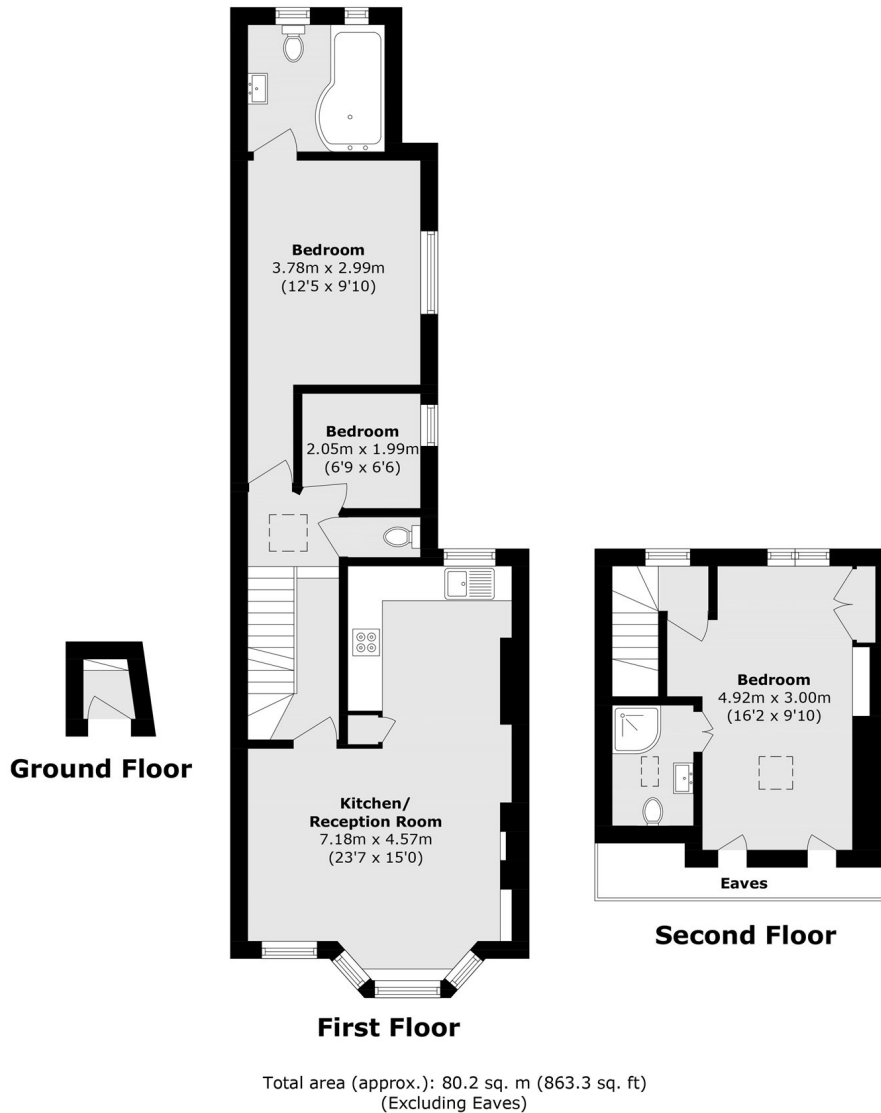
A brilliantly located and tastefully modernised three bedroom, split level Victorian flat. A spacious, open plan kitchen-diner and reception room benefits from wood flooring and a large bay window. Two en-suite double bedrooms are accompanied by a third bedroom ideal as a nursery or office, and an additional WC. The house blends Victorian charm with modern touches and is offered with a long lease and low running costs.

Located within the popular residential Glebe estate, just South of Chiswick High Road and the many amenities on offer. Devonshire Road has a superb selection of boutiques and coffee shops, with Turnham Green offering the nearest tube station. Other walkable points of interest include the Thames riverside (0.4 miles) And Chiswick House and Grounds (0.3 miles).

- Victorian Conversion • Three Bedrooms • Two En Suite Bathrooms • Separate WC • Wood Flooring • Spacious Kitchen/Reception •

FLETCHERS

ESTATE AGENTS



Fletchers Chiswick Turnham Green Sales
58 Turnham Green Terrace, London, W4 1QP
020 8987 3000
chiswicksales@fletcherestates.com

Energy Rating: D. We aim to make our particulars both accurate and reliable. However they are not guaranteed; nor do they form part of an offer or contract. If you require clarification on any points then please contact us, especially if you're traveling some distance to view. Please note that appliances and heating systems have not been tested and therefore no warranties can be given as to their good working order.