



Guide Price
£250,000

Freehold

3x  1x  2x 

**Ufton Lane,
Sittingbourne, Kent,
ME10**

OVER 60?

Secure this property
for up to **59% less!**

Wards
Helping you move forwards



Main features

- End of terrace family home on Sittingbourne's south side
- Newly renovated; ready to move into
- Town centre location
- Close to local schools, shops and amenities
- Perfect first time buy or investment opportunity
- Chain free

Accommodation

SPLIT LEVEL GROUND FLOOR

Hallway

Lounge: 15'8 x 9'8 (4.78m x 2.95m)

Dining Room: 12'9 x 12'6 (3.89m x 3.81m)

Kitchen: 10'6 x 8'1 (3.20m x 2.47m)

Bathroom

SPLIT LEVEL FIRST FLOOR

Landing

Bedroom 1: 13'4 x 12'9 (4.07m x 3.89m)

Bedroom 2: 12'2 x 9'6 (3.71m x 2.90m)

Bedroom 3: 9'1 x 7'6 (2.77m x 2.29m)

OUTBUILDING

Garage

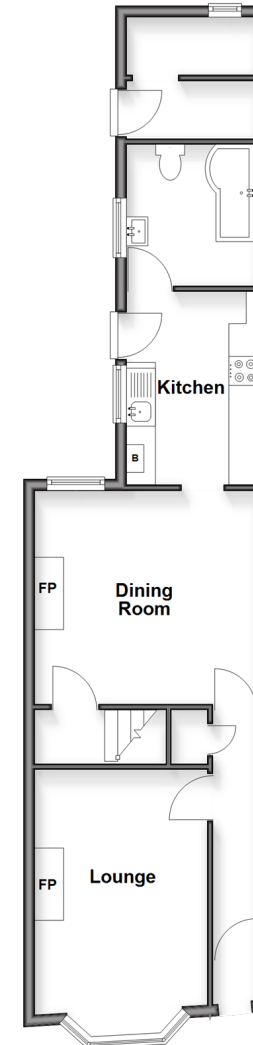
OUTSIDE

Front Garden

Rear Garden

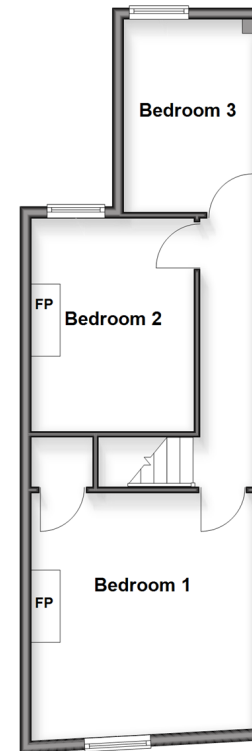
Split Level Ground Floor

Approx. 53.4 sq. metres (575.3 sq. feet)



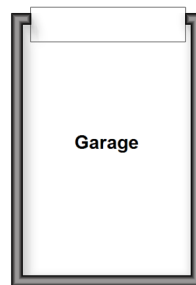
Split Level First Floor

Approx. 42.4 sq. metres (456.0 sq. feet)



Outbuilding

Approx. 12.7 sq. metres (136.4 sq. feet)



Call Sittingbourne - 01795 427272 ■ wardsof Kent.co.uk

- Legal advice should be taken to verify fixtures/fittings, planning, alterations and/or lease details
- Appliances & services are untested, dimensions are approximate and floor plans are not to scale
- Through a Homewise Home For Life Plan people aged 60+ can secure this property for up to 59% less, by purchasing a Lifetime Lease



11739006/20260228/TT/MC1